



**ELECTRONIC COPY**

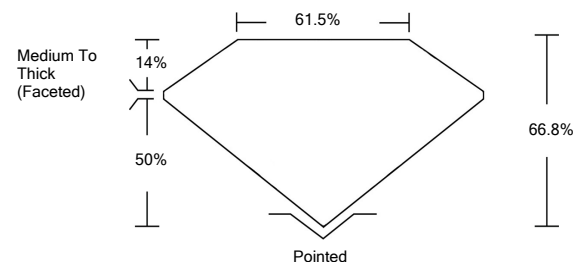
**LABORATORY GROWN DIAMOND REPORT**

LG532264046

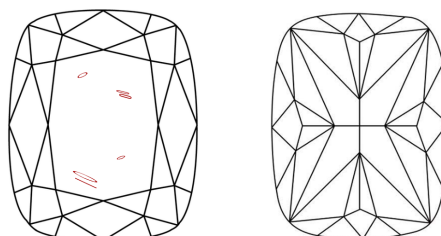
**GRADING SCALES**

|                             |                              |                             |                        |                   |           |   |
|-----------------------------|------------------------------|-----------------------------|------------------------|-------------------|-----------|---|
| COLOR GRADING SCALE         | CL                           | NC                          | FT                     | VL                | LT        |   |
|                             | COLORLESS D-F                | NEAR COLORLESS G-J          | FAINT K-M              | VERY LIGHT N-R    | LIGHT S-Z |   |
| CLARITY (10x) GRADING SCALE | FL                           | IF                          | VVS                    | VS                | SI        | I |
|                             | FLAWLESS INTERNALLY FLAWLESS | VERY VERY SLIGHTLY INCLUDED | VERY SLIGHTLY INCLUDED | SLIGHTLY INCLUDED | INCLUDED  |   |

**PROPORTIONS**

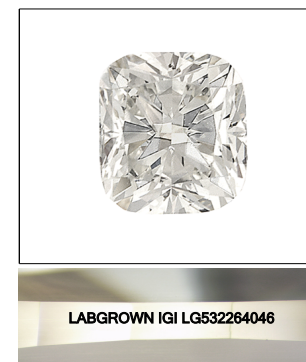


**CLARITY CHARACTERISTICS**



**KEY TO SYMBOLS**

Red symbols indicate internal characteristics.  
Green symbols indicate external characteristics.



**LASERSCRIBE<sup>SM</sup>**  
Sample Image Used

June 8, 2022

IGI Report Number **LG532264046**

Description **LABORATORY GROWN DIAMOND**

Shape and Cutting Style **CUSHION BRILLIANT**

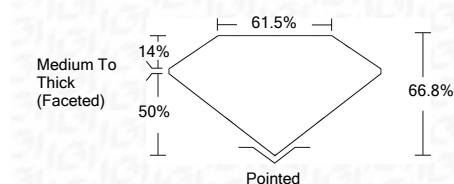
Measurements **7.86 X 6.81 X 4.55 MM**

**GRADING RESULTS**

Carat Weight **1.83 CARAT**

Color Grade **D**

Clarity Grade **SI 1**



**ADDITIONAL GRADING INFORMATION**

Polish **EXCELLENT**

Symmetry **EXCELLENT**

Fluorescence **NONE**

Inscription(s) **LABGROWN IGI LG532264046**

Comments: As Grown - No indication of post-growth treatment.  
This Laboratory Grown Diamond was created by High Pressure High Temperature (HPHT) growth process.  
Type II

June 8, 2022

IGI Report Number **LG532264046**

Description **LABORATORY GROWN DIAMOND**

Shape and Cutting Style **CUSHION BRILLIANT**

Measurements **7.86 X 6.81 X 4.55 MM**

**GRADING RESULTS**

Carat Weight **1.83 CARAT**

Color Grade **D**

Clarity Grade **SI 1**

**ADDITIONAL GRADING INFORMATION**

Polish **EXCELLENT**

Symmetry **EXCELLENT**

Fluorescence **NONE**

Inscription(s) **LABGROWN IGI LG532264046**

Comments: As Grown - No indication of post-growth treatment.  
This Laboratory Grown Diamond was created by High Pressure High Temperature (HPHT) growth process.  
Type II



|                            |            |                           |
|----------------------------|------------|---------------------------|
| IGI Report No. LG532264046 | 1.83 CARAT | D                         |
| CUSHION BRILLIANT          | SI 1       | 66.8%                     |
| 7.86 X 6.81 X 4.55 MM      | 61.5%      | Medium To Thick (Faceted) |
| Carat Weight               | Pointed    | EXCELLENT                 |
| Color Grade                | EXCELLENT  | EXCELLENT                 |
| Clarity Grade              | NONE       | LABGROWN IGI LG532264046  |
| Depth                      | None       |                           |
| Table                      |            |                           |
| Girdle                     |            |                           |
| Culet                      |            |                           |
| Polish                     |            |                           |
| Symmetry                   |            |                           |
| Fluorescence               |            |                           |
| Inscription(s)             |            |                           |
| Comments:                  |            |                           |

As Grown - No indication of post-growth treatment.  
This Laboratory Grown Diamond was created by High Pressure High Temperature (HPHT) growth process.  
Type II