

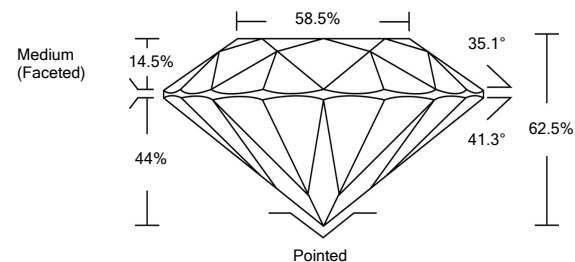


ELECTRONIC COPY

LABORATORY GROWN DIAMOND REPORT

LG533218424

PROPORTIONS



GRADING SCALES

COLOR GRADING SCALE	CL	NC	FT	VL	LT	
	COLORLESS D-F	NEAR COLORLESS G-J	FAINT K-M	VERY LIGHT N-R	LIGHT S-Z	
CLARITY (10x) GRADING SCALE	FL	IF	VVS	VS	SI	I
	FLAWLESS INTERNALLY FLAWLESS	VERY VERY SLIGHTLY INCLUDED	VERY SLIGHTLY INCLUDED	SLIGHTLY INCLUDED	INCLUDED	

June 20, 2022

IGI Report Number

LG533218424

Description

**LABORATORY GROWN
DIAMOND**

Shape and Cutting Style

ROUND BRILLIANT

Measurements

7.79 - 7.85 X 4.90 MM

GRADING RESULTS

Carat Weight

1.86 CARAT

Color Grade

F

Clarity Grade

VS 1

Cut Grade

IDEAL

June 20, 2022

IGI Report Number

LG533218424

Description

**LABORATORY GROWN
DIAMOND**

Shape and Cutting Style

ROUND BRILLIANT

Measurements

7.79 - 7.85 X 4.90 MM

GRADING RESULTS

Carat Weight

1.86 CARAT

Color Grade

F

Clarity Grade

VS 1

Cut Grade

IDEAL

ADDITIONAL GRADING INFORMATION

Polish

EXCELLENT

Symmetry

EXCELLENT

Fluorescence

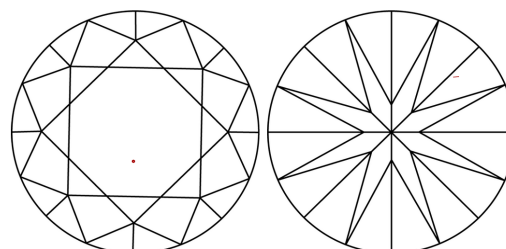
NONE

Inscription(s)

LABGROWN IGI LG533218424

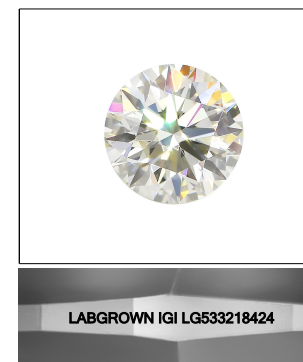
Comments: This Laboratory Grown Diamond was created by Chemical Vapor Deposition (CVD) growth process and may include post-growth treatment.
Type IIa

CLARITY CHARACTERISTICS



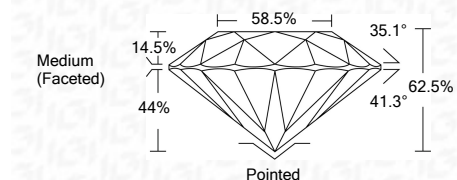
KEY TO SYMBOLS

Red symbols indicate internal characteristics.
Green symbols indicate external characteristics.



LASERSCRIBESM

Sample Image Used



ADDITIONAL GRADING INFORMATION

Polish

EXCELLENT

Symmetry

EXCELLENT

Fluorescence

NONE

Inscription(s)

LABGROWN IGI LG533218424

Comments: This Laboratory Grown Diamond was created by Chemical Vapor Deposition (CVD) growth process and may include post-growth treatment.
Type IIa



IGI

IGI Report No. LG533218424	1.86 CARAT	F	Pointed
ROUND BRILLIANT	VS 1	IDEAL	EXCELLENT
7.79 - 7.85 X 4.90 MM	62.5%	58.5%	EXCELLENT
Carat Weight	Medium (Faceted)		NONE
Color Grade			LABGROWN IGI
Clarity Grade			LG533218424
Cut Grade			LABGROWN IGI
Depth			LG533218424
Table			
Girdle			
Culet			
Polish			
Symmetry			
Fluorescence			
Inscription(s)			

Comments: This Laboratory Grown Diamond was created by Chemical Vapor Deposition (CVD) growth process and may include post-growth treatment.
Type IIa

