



ELECTRONIC COPY

LABORATORY GROWN DIAMOND REPORT

June 17, 2022

IGI Report Number **LG533293797**

Description **LABORATORY GROWN
DIAMOND**

Shape and Cutting Style **OVAL BRILLIANT**

Measurements 10.06 X 7.24 X 4.43 MM

GRADING RESULTS

Carat Weight 2.00 CARATS

Color Grade E

Clarity Grade WS 2

ADDITIONAL GRADING INFORMATION

Polish EXCELLENT

Symmetry **EXCELLENT**

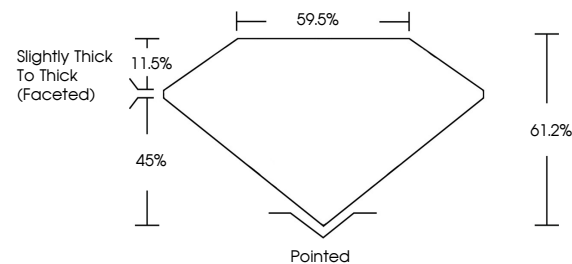
Fluorescence **NONE**

Inscription(s) LABGROWN IGI LG533293797

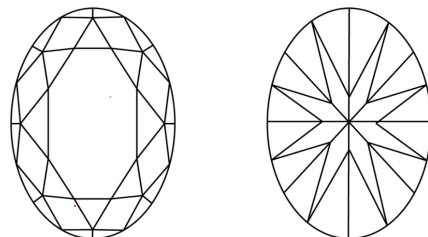
Comments: This Laboratory Grown Diamond was created by Chemical Vapor Deposition (CVD) growth process and may include post-growth treatment.
Type IIa

LG533293797

PROPORTIONS



CLARITY CHARACTERISTICS

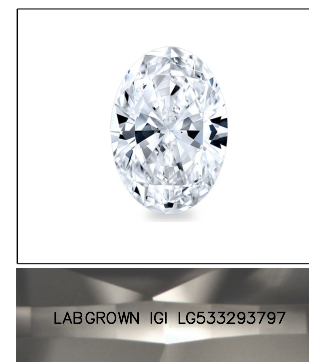


KEY TO SYMBOLS

Red symbols indicate internal characteristics.
Green symbols indicate external characteristics.

GRADING SCALES

| | | | | | | |
|-----------------------------|------------------------------|--------------------|-----------------------------|------------------------|-------------------|-----------|
| COLOR GRADING SCALE | CL | | NC | FT | VLT | LT |
| | COLORLESS D-F | NEAR COLORLESS G-J | | FAINT K-M | VERY LIGHT N-R | LIGHT S-Z |
| CLARITY (10x) GRADING SCALE | FL | IF | VVS | VS | SI | I |
| | FLAWLESS INTERNALLY FLAWLESS | | VERY VERY SLIGHTLY INCLUDED | VERY SLIGHTLY INCLUDED | SLIGHTLY INCLUDED | INCLUDED |

LASERSCRIBESM

Sample Image Used



© IGI 2020, International Gemological Institute

FD - 10 20

LABORATORY GROWN DIAMOND REPORT

| | |
|-------------------|------------------|
| June 17, 2022 | |
| IGI Report Number | LG533293797 |
| Description | LABORATORY GROWN |

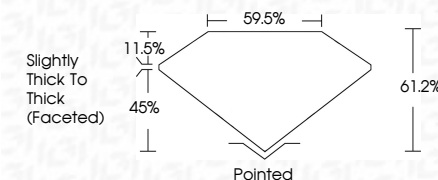
Shape and Cutting Style **OVAL BRILLIANT**

Measurements 10.06 X 7.24 X 4.43 MM

GRADING RESULTS

Carat Weight **2.00 CARATS**

Color Grade E

Clarity Grade WS 2

ADDITIONAL GRADING INFORMATION

Polish **EXCELLENT**

Symmetry **EXCELLENT**

Fluorescence **NONE**

Inscription(s) LABGROWN IGI LG533293797

Comments: This Laboratory Grown Diamond was created by Chemical Vapor Deposition (CVD) growth process and may include post-growth treatment.
Type IIa



| | |
|--------------------|--|
| June 19, 2022 | GJ Report No. LG3326797 |
| CVAL BRIGHT | |
| 10.0x 7.2x 4.43 MM | |
| Carat Weight | 2.00 CARATS |
| Color Grade | E |
| Clarity Grade | VVS 2 |
| Depth | 61.2% |
| Table | 89.5% |
| Girdle | Slightly Thick To Thick (faceted) |
| Culet | Poished |
| Polish | EXCELLENT |
| Symmetry | EXCELLENT |
| Fluorescence | NONE |
| Inscriptions(s) | LABGROWN161 LG3326797 |
| Comments: | This Laboratory Grown Diamond was created by Chemical Vapor Deposition (CVD) growth process and may include post-growth treatment. |
| Type IId | |