



ELECTRONIC COPY

LABORATORY GROWN DIAMOND REPORT

June 27, 2022	
IGI Report Number	LG533293827
Description	LABORATORY GROWN DIAMOND
Shape and Cutting Style	CUT CORNERED RECTANGULAR MODIFIED BRILLIANT
Measurements	8.32 X 6.54 X 4.26 MM

GRADING RESULTS

Carat Weight	2.08 CARATS
Color Grade	F
Clarity Grade	VS 1

ADDITIONAL GRADING INFORMATION

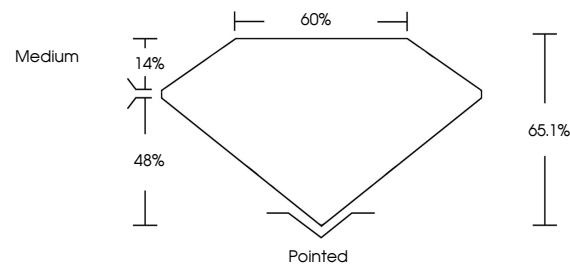
Polish	EXCELLENT
Symmetry	EXCELLENT
Fluorescence	NONE

Inscription(s) LABGROWN IGI LG533293827

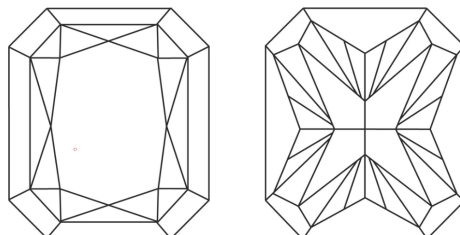
Comments: This Laboratory Grown Diamond was created by Chemical Vapor Deposition (CVD) growth process and may include post-growth treatment.
Type IIa

LG533293827

PROPORTIONS



CLARITY CHARACTERISTICS

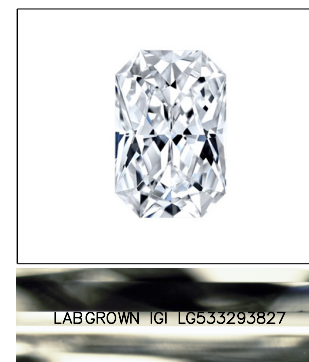


KEY TO SYMBOLS

Red symbols indicate internal characteristics.
Green symbols indicate external characteristics.

GRADING SCALES

COLOR GRADING SCALE	CL		NC	FT	VLT	LT
	COLORLESS D-F	NEAR COLORLESS G-J		FAINT K-M	VERY LIGHT N-R	LIGHT S-Z
CLARITY (10x) GRADING SCALE	FL	IF	VVS	VS	SI	I
	FLAWLESS INTERNALLY FLAWLESS		VERY VERY SLIGHTLY INCLUDED	VERY SLIGHTLY INCLUDED	SLIGHTLY INCLUDED	INCLUDED

LASERSCRIBESM

Sample Image Used



© IGI 2020, International Gemological Institute

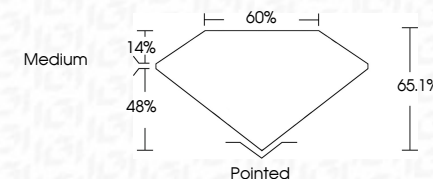
FD - 10 20

www.igi.org

LABORATORY GROWN DIAMOND REPORT

June 27, 2022	
IGI Report Number	LG533293827
Description	LABORATORY GROWN DIAMOND
Shape and Cutting Style	CUT CORNERED RECTANGULAR MODIFIED BRILLIANT
Measurements	8.32 X 6.54 X 4.26 MM

Carat Weight	2.08 CARATS
Color Grade	F
Clarity Grade	VS 1



ADDITIONAL GRADING INFORMATION

Polish	EXCELLENT
Symmetry	EXCELLENT
Fluorescence	NONE
Inscription(s)	LABGROWN IGI LG533293827

Inscription(s) LABGROWN IGI LG533293827

Comments: This Laboratory Grown Diamond was created by Chemical Vapor Deposition (CVD) growth process and may include post-growth treatment.
Type IIa



	June 29, 2022
GUT Report No LG6389938Z7	
CIT CORNERED RECT MODIFIED	
13.2 X 3.51 X 4.25 MM	
Color Weight:	2.08 CARATS F
Clarity Grade	VS 1
Depth	65.1%
Table	60%
Girdle	Medium
Culet	Poited
Polish	EXCELLENT
Symmetry	EXCELLENT
Fluorescence	NONE
Inscriptions (if applicable)	Lasergrain (g) LG6389938Z7
Comments:	The Laboratory Geminal Diamond was created by Chemical Vapor Deposition (CVD) growth process and may include post-growth treatment.
Type IId	

This Laboratory Grown Diamond was created by Chemical Vapor Deposition (CVD) growth process and may include post-growth treatment.