



ELECTRONIC COPY

LABORATORY GROWN DIAMOND REPORT

June 27, 2022	
IGI Report Number	LG533293829
Description	LABORATORY GROWN DIAMOND
Shape and Cutting Style	ROUND BRILLIANT
Measurements	7.36 - 7.39 X 4.64 MM

GRADING RESULTS

Carat Weight	1.56 CARAT
Color Grade	E
Clarity Grade	VVS 2
Cut Grade	EXCELLENT

ADDITIONAL GRADING INFORMATION

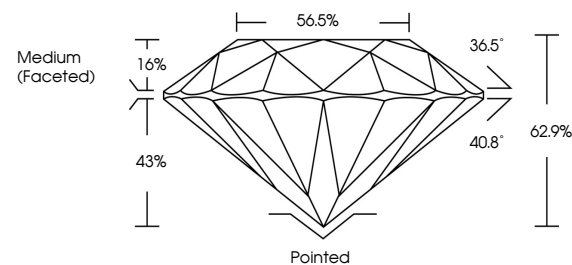
Polish	EXCELLENT
Symmetry	EXCELLENT
Fluorescence	NONE

Inscription(s) LABGROWN |G| LG533293829

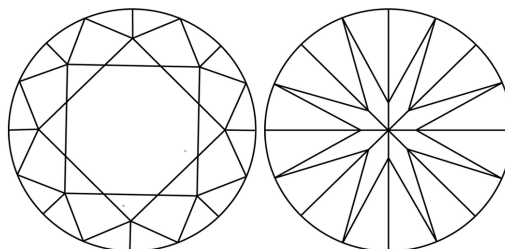
Comments: This Laboratory Grown Diamond was created by Chemical Vapor Deposition (CVD) growth process and may include post-growth treatment.
Type IIa

LG533293829

PROPORTIONS



CLARITY CHARACTERISTICS

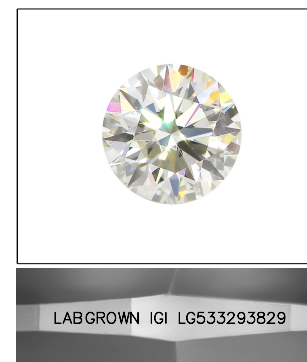


KEY TO SYMBOLS

Red symbols indicate internal characteristics.
Green symbols indicate external characteristics.

GRADING SCALES

COLOR GRADING SCALE	CL		NC	FT	VLT	LT
	COLORLESS D-F		NEAR COLORLESS G-J	FAINT K-M	VERY LIGHT N-R	LIGHT S-Z
CLARITY (10x) GRADING SCALE	FL	IF	VVS	VS	SI	I
	FLAWLESS INTERNALLY FLAWLESS		VERY VERY SLIGHTLY INCLUDED	VERY SLIGHTLY INCLUDED	SLIGHTLY INCLUDED	INCLUDED

LASERSCRIBESM

Sample Image Used

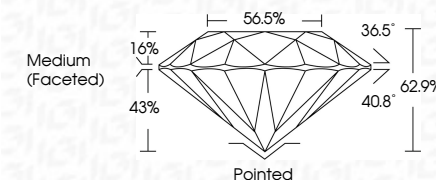


© IGI 2020, International Gemological Institute

FD - 10 20

LABORATORY GROWN DIAMOND REPORT

June 27, 2022	
IGI Report Number	LG533293829
Description	LABORATORY GROWN DIAMOND
Shape and Cutting Style	ROUND BRILLIANT
Measurements	7.36 - 7.39 X 4.64 MM
GRADING RESULTS	
Carat Weight	1.56 CARAT
Color Grade	E
Clarity Grade	VVS 2
Cut Grade	EXCELLENT



ADDITIONAL GRADING INFORMATION

Polish	EXCELLENT
Symmetry	EXCELLENT
Fluorescence	NONE
Inscription(s)	LABGROWN IGI LG533293829

Inscription(s) LABGROWN IGI LG533293829

Comments: This Laboratory Grown Diamond was created by Chemical Vapor Deposition (CVD) growth process and may include post-growth treatment.
Type IIa



June 27, 2022	GJ Report No. GCS3293829
ROUND BRILLIANT	Color Grade
1.56 CARAT	E
1.56 CARAT	VVS 2
	EXCELLENT
	62.9%
	56.5%
	Medium Faceted
	Painted
	EXCELLENT
	EXCELLENT
	NONE
	LAB-GROWN IGI
	LB303293829
	Comments:
	This Laboratory Grown Diamond was created by Chemical Vapor Deposition (CVD) growth process and may include surface treatment.
	Yone lig.

This Laboratory Grown Diamond was created by Chemical Vapor Deposition (CVD) growth process and may include post-growth treatment.