



**INTERNATIONAL
GEMOLOGICAL
INSTITUTE**

LABORATORY GROWN DIAMOND REPORT

IGI LABORATORY GROWN DIAMOND IDENTIFICATION REPORT

June 20, 2022
 IGI Report Number LG534236169
 Description LABORATORY GROWN DIAMOND
 Shape and Cutting Style SQUARE CUSHION BRILLIANT
 Measurements 4.88 X 4.83 X 3.15 MM

GRADING RESULTS

Carat Weight 0.64 CARAT
 Color Grade D
 Clarity Grade VS 1

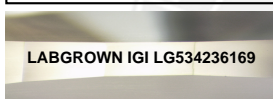
ADDITIONAL GRADING INFORMATION

Polish VERY GOOD
 Symmetry VERY GOOD
 Fluorescence NONE
 Inscription(s) LABGROWN IGI LG534236169

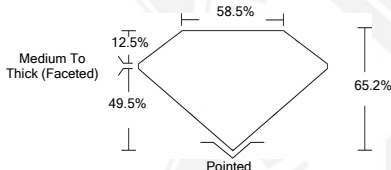
Comments: As Grown - No indication of post-growth treatment.
 This Laboratory Grown Diamond was created by High Pressure High Temperature (HPHT) growth process.
 Type II

**ELECTRONIC COPY LABORATORY GROWN
DIAMOND REPORT**

LG534236169



LASERSCRIBESM
Sample Images Used



**IGI LABORATORY GROWN
DIAMOND ID REPORT**

June 20, 2022
 IGI Report Number **LG534236169**
SQUARE CUSHION BRILLIANT
4.88 X 4.83 X 3.15 MM
 Carat Weight 0.64 CARAT
 Color Grade D
 Clarity Grade VS 1
 Polish VERY GOOD
 Symmetry VERY GOOD
 Fluorescence NONE
 Inscription(s) LABGROWN IGI
 LG534236169

Comments: As Grown - No indication of post-growth treatment.
 This Laboratory Grown Diamond was created by High Pressure High Temperature (HPHT) growth process.
 Type II

**IGI LABORATORY GROWN
DIAMOND ID REPORT**

June 20, 2022
 IGI Report Number **LG534236169**
SQUARE CUSHION BRILLIANT
4.88 X 4.83 X 3.15 MM
 Carat Weight 0.64 CARAT
 Color Grade D
 Clarity Grade VS 1
 Polish VERY GOOD
 Symmetry VERY GOOD
 Fluorescence NONE
 Inscription(s) LABGROWN IGI
 LG534236169

Comments: As Grown - No indication of post-growth treatment.
 This Laboratory Grown Diamond was created by High Pressure High Temperature (HPHT) growth process.
 Type II

THIS DOCUMENT WAS PRODUCED WITH THE FOLLOWING SECURITY MEASURES: SPECIAL DOCUMENT PAPER, INK SCREENS, WATERMARK, BACKGROUND DESIGN, HOLOGRAM AND OTHER SECURITY FEATURES NOT LISTED AND DO EXCEED DOCUMENT SECURITY INDUSTRY GUIDELINES.

For terms & conditions and to verify this report, please visit www.igi.org