



**ELECTRONIC COPY**

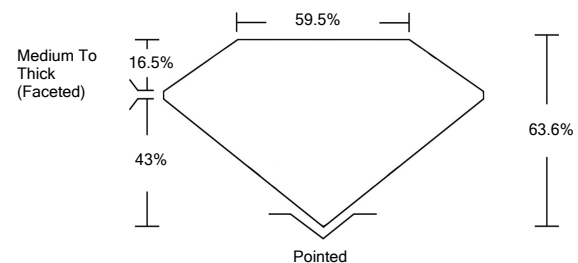
LG534247344

**LABORATORY GROWN DIAMOND REPORT**

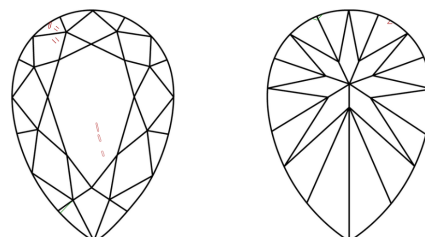
**GRADING SCALES**

COLOR GRADING SCALE	CL	NC	FT	VLT	LT	
	COLORLESS D-F	NEAR COLORLESS G-J	FAINT K-M	VERY LIGHT N-R	LIGHT S-Z	
CLARITY (10x) GRADING SCALE	FL	IF	VVS	VS	SI	I
	FLAWLESS INTERNALLY FLAWLESS	VERY VERY SLIGHTLY INCLUDED	VERY SLIGHTLY INCLUDED	SLIGHTLY INCLUDED	INCLUDED	

**PROPORTIONS**

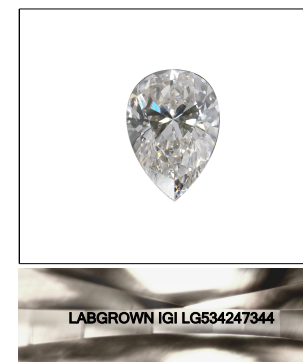


**CLARITY CHARACTERISTICS**



**KEY TO SYMBOLS**

Red symbols indicate internal characteristics.  
Green symbols indicate external characteristics.



**LASERSCRIBE<sup>SM</sup>**  
Sample Image Used

June 24, 2022

IGI Report Number

**LG534247344**

Description

**LABORATORY GROWN  
DIAMOND**

Shape and Cutting Style

**PEAR BRILLIANT**

Measurements

**8.44 X 5.69 X 3.62 MM**

**GRADING RESULTS**

Carat Weight

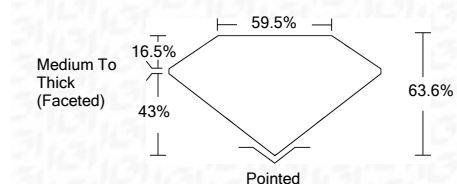
**1.06 CARAT**

Color Grade

**D**

Clarity Grade

**SI 1**



**ADDITIONAL GRADING INFORMATION**

Polish

**VERY GOOD**

Symmetry

**EXCELLENT**

Fluorescence

**NONE**

Inscription(s)

**LABGROWN IGI LG534247344**

Comments: As Grown - No indication of post-growth treatment.  
This Laboratory Grown Diamond was created by High Pressure High Temperature (HPHT) growth process.  
Type II

June 24, 2022

IGI Report Number

**LG534247344**

Description

**LABORATORY GROWN  
DIAMOND**

Shape and Cutting Style

**PEAR BRILLIANT**

Measurements

**8.44 X 5.69 X 3.62 MM**

**GRADING RESULTS**

Carat Weight

**1.06 CARAT**

Color Grade

**D**

Clarity Grade

**SI 1**

**ADDITIONAL GRADING INFORMATION**

Polish

**VERY GOOD**

Symmetry

**EXCELLENT**

Fluorescence

**NONE**

Inscription(s)

**LABGROWN IGI LG534247344**

Comments: As Grown - No indication of post-growth treatment.  
This Laboratory Grown Diamond was created by High Pressure High Temperature (HPHT) growth process.  
Type II



June 24, 2022	IGI Report No. LG534247344	PEAR BRILLIANT	8.44 X 5.69 X 3.62 MM	1.06 CARAT	D	SI 1	63.6%	59.5%	Medium To Thick (Faceted)	Pointed	VERY GOOD	EXCELLENT	NONE	LABGROWN IGI LG534247344	Comments: As Grown - No indication of post-growth treatment. This Laboratory Grown Diamond was created by High Pressure High Temperature (HPHT) growth process. Type II
---------------	----------------------------	----------------	-----------------------	------------	---	------	-------	-------	---------------------------	---------	-----------	-----------	------	--------------------------	---