

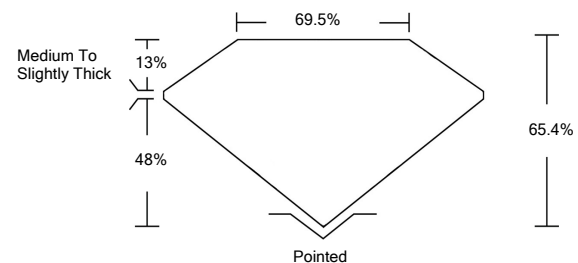


ELECTRONIC COPY

LABORATORY GROWN DIAMOND REPORT

LG534247457

PROPORTIONS



GRADING SCALES

| COLOR GRADING SCALE | CL | NC | FT | VL | LT | |
|-----------------------------|------------------------------|-----------------------------|------------------------|-------------------|-----------|----------|
| | COLORLESS D-F | NEAR COLORLESS G-J | FAINT K-M | VERY LIGHT N-R | LIGHT S-Z | |
| CLARITY (10x) GRADING SCALE | FL | IF | VVS | VS | SI | I |
| | FLAWLESS INTERNALLY FLAWLESS | VERY VERY SLIGHTLY INCLUDED | VERY SLIGHTLY INCLUDED | SLIGHTLY INCLUDED | | INCLUDED |

June 23, 2022
 IGI Report Number **LG534247457**
 Description **LABORATORY GROWN DIAMOND**
 Shape and Cutting Style **CUT CORNERED RECTANGULAR MODIFIED BRILLIANT**
 Measurements **6.63 X 5.06 X 3.31 MM**

GRADING RESULTS

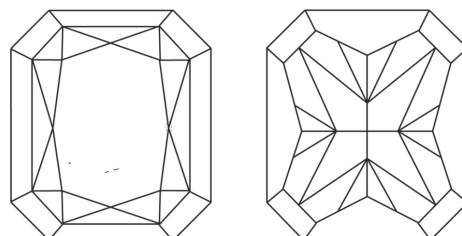
Carat Weight **1.01 CARAT**
 Color Grade **D**
 Clarity Grade **VS 1**

ADDITIONAL GRADING INFORMATION

Polish **VERY GOOD**
 Symmetry **EXCELLENT**
 Fluorescence **NONE**
 Inscription(s) **LABGROWN IGI LG534247457**

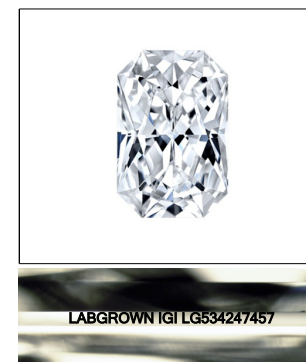
Comments: As Grown - No indication of post-growth treatment. This Laboratory Grown Diamond was created by High Pressure High Temperature (HPHT) growth process. Type II

CLARITY CHARACTERISTICS



KEY TO SYMBOLS

Red symbols indicate internal characteristics.
 Green symbols indicate external characteristics.

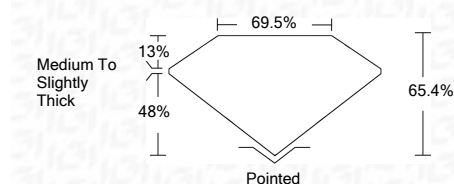


LASERSCRIBESM
 Sample Image Used

June 23, 2022
 IGI Report Number **LG534247457**
 Description **LABORATORY GROWN DIAMOND**
 Shape and Cutting Style **CUT CORNERED RECTANGULAR MODIFIED BRILLIANT**
 Measurements **6.63 X 5.06 X 3.31 MM**

GRADING RESULTS

Carat Weight **1.01 CARAT**
 Color Grade **D**
 Clarity Grade **VS 1**



ADDITIONAL GRADING INFORMATION

Polish **VERY GOOD**
 Symmetry **EXCELLENT**
 Fluorescence **NONE**
 Inscription(s) **LABGROWN IGI LG534247457**

Comments: As Grown - No indication of post-growth treatment. This Laboratory Grown Diamond was created by High Pressure High Temperature (HPHT) growth process. Type II



| | | | | | | | | | | | | | | | | |
|---------------|----------------------------|---------------------------------------|-----------------------|---------------|-------|--------|-------|--------|--------------------------|--------------|----------------|-----------|------|--------------------------|-----------|---|
| June 23, 2022 | IGI Report No. LG534247457 | CUT CORNERED RECT. MODIFIED BRILLIANT | 6.63 X 5.06 X 3.31 MM | 1.01 CARAT | D | VS 1 | 65.4% | 69.5% | Medium To Slightly Thick | Pointed | VERY GOOD | EXCELLENT | NONE | LABGROWN IGI LG534247457 | Comments: | As Grown - No indication of post-growth treatment. This Laboratory Grown Diamond was created by High Pressure High Temperature (HPHT) growth process. Type II |
| | | Carat Weight | Color Grade | Clarity Grade | Table | Girdle | Culet | Polish | Symmetry | Fluorescence | Inscription(s) | | | | | |