



**ELECTRONIC COPY**

## LABORATORY GROWN DIAMOND REPORT

July 5, 2022	
IGI Report Number	LG536204882
Description	LABORATORY GROWN DIAMOND
Shape and Cutting Style	ROUND BRILLIANT
Measurements	9.36 - 9.42 X 5.74 MM

## GRADING RESULTS

Carat Weight	3.10 CARATS
Color Grade	E
Clarity Grade	VVS 2
Cut Grade	EXCELLENT

### ADDITIONAL GRADING INFORMATION

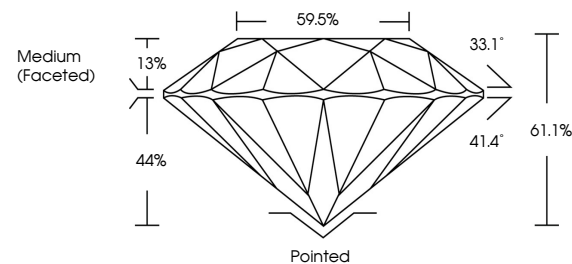
Polish	EXCELLENT
Symmetry	EXCELLENT
Fluorescence	NONE

Inscription(s) LABGROWN IGI LG536204882

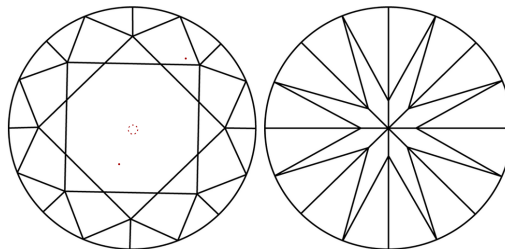
Comments: This Laboratory Grown Diamond was created by Chemical Vapor Deposition (CVD) growth process and may include post-growth treatment.  
Type IIa

LG536204882

## PROPORTIONS



## CLARITY CHARACTERISTICS

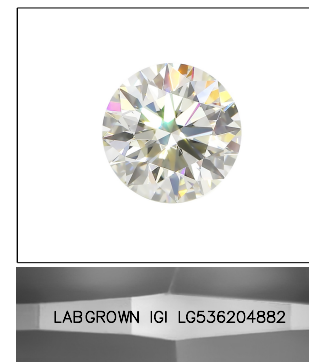


## KEY TO SYMBOLS

Red symbols indicate internal characteristics.  
Green symbols indicate external characteristics.

## GRADING SCALES

COLOR GRADING SCALE	CL		NC		FT		VLT		LT	
	COLORLESS D-F		NEAR COLORLESS G-J		FAINT K-M		VERY LIGHT N-R		LIGHT S-Z	
CLARITY (10x) GRADING SCALE	FL IF		VVS		VS		SI		I	
	FLAWLESS INTERNALLY FLAWLESS		VERY VERY SLIGHTLY INCLUDED		VERY SLIGHTLY INCLUDED		SLIGHTLY INCLUDED		INCLUDED	

LASERSCRIBE<sup>SM</sup>

Sample Image Used



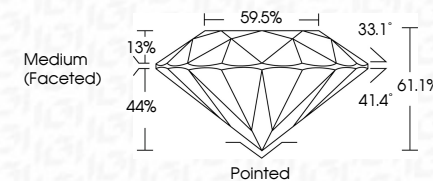
© IGI 2020, International Gemological Institute

FD - 10 20

**www.igi.org**

## LABORATORY GROWN DIAMOND REPORT

July 5, 2022	
IGI Report Number	LG536204882
Description	LABORATORY GROWN DIAMOND
Shape and Cutting Style	ROUND BRILLIANT
Measurements	9.36 - 9.42 X 5.74 MM
<b>GRADING RESULTS</b>	
Carat Weight	3.10 CARATS
Color Grade	E
Clarity Grade	VVS 2
Cut Grade	EXCELLENT



### ADDITIONAL GRADING INFORMATION

Polish	EXCELLENT
Symmetry	EXCELLENT
Fluorescence	NONE
Inscription(s)	LABGROWN IGI LG536204882

Comments: This Laboratory Grown Diamond was created by Chemical Vapor Deposition (CVD) growth process and may include post-growth treatment.  
Type IIa



July 5, 2022  
GJ Report No | G536204882

GI Report No LG536204882  
ROUND BRILLIANT  
2.36 - 9.42 X 5.74 MM

2.36 - 9.42 X 5.74 MM  
Carat Weight  
3.10 CARATS

Clarity Grade	WS 2
---------------	------

Cut Grade	EXCELLENT
Depth	61.1%

Table	59.5%
Girdle	Medium (Faceted)

Culet		<b>Poinked</b>
-------	--	----------------

Polish	EXCELLENT
Symmetry	EXCELLENT

	Fluorescence	NONE	I ABGDOWN IGI
Extraction			
Precipitation			
Recovery			
Concentration			
Storage			
Analysis			
Results			
Conclusion			
References			
Appendix			
Bibliography			
Glossary			
Index			
Summary			
Notes			
Comments			
Recommendations			
Final Report			
Project Summary			
Executive Summary			
Introduction			
Background			
Objectives			
Methodology			
Data Collection			
Data Analysis			
Results Discussion			
Conclusions			
Recommendations			
References			
Appendix			
Bibliography			
Glossary			
Index			
Summary			
Notes			
Comments			
Recommendations			
Final Report			
Project Summary			
Executive Summary			
Introduction			
Background			
Objectives			
Methodology			
Data Collection			
Data Analysis			
Results Discussion			
Conclusions			
Recommendations			
References			
Appendix			
Bibliography			
Glossary			
Index			
Summary			
Notes			
Comments			
Recommendations			
Final Report			
Project Summary			
Executive Summary			
Introduction			
Background			
Objectives			
Methodology			
Data Collection			
Data Analysis			
Results Discussion			
Conclusions			
Recommendations			
References			
Appendix			
Bibliography			
Glossary			
Index			
Summary			
Notes			
Comments			
Recommendations			
Final Report			
Project Summary			
Executive Summary			
Introduction			
Background			
Objectives			
Methodology			
Data Collection			
Data Analysis			
Results Discussion			
Conclusions			
Recommendations			
References			
Appendix			
Bibliography			
Glossary			
Index			
Summary			
Notes			
Comments			
Recommendations			
Final Report			
Project Summary			
Executive Summary			
Introduction			
Background			
Objectives			
Methodology			
Data Collection			
Data Analysis			
Results Discussion			
Conclusions			
Recommendations			
References			
Appendix			
Bibliography			
Glossary			
Index			
Summary			
Notes			
Comments			
Recommendations			
Final Report			
Project Summary			
Executive Summary			
Introduction			
Background			
Objectives			
Methodology			
Data Collection			
Data Analysis			
Results Discussion			
Conclusions			
Recommendations			
References			
Appendix			
Bibliography		</	

Comments:

**This Laboratory Grown Diamond was  
created by Chemical Vapor Deposition**

**Type IIa**