



**ELECTRONIC COPY**

## LABORATORY GROWN DIAMOND REPORT

July 7, 2022

IGI Report Number **LG537222784**

|             |                             |
|-------------|-----------------------------|
| Description | LABORATORY GROWN<br>DIAMOND |
|-------------|-----------------------------|

Shape and Cutting Style **OVAL BRILLIANT**

Measurements 11.62 X 8.20 X 5.20 MM

## GRADING RESULTS

Carat Weight **3.18 CARATS**

Color Grade F

Clarity Grade VS 1

### ADDITIONAL GRADING INFORMATION

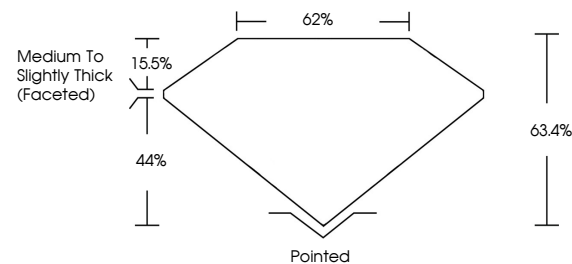
Polish **EXCELLENT**Symmetry **EXCELLENT**Fluorescence **NONE**

Inscription(s) LABGROWN IGI LG537222784

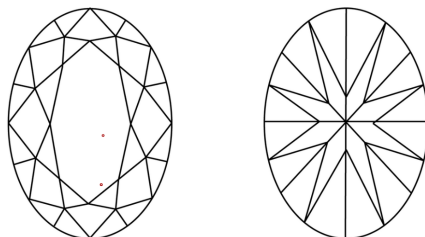
Comments: This Laboratory Grown Diamond was created by Chemical Vapor Deposition (CVD) growth process and may include post-growth treatment.  
Type IIa

LG537222784

## PROPORTIONS



## CLARITY CHARACTERISTICS

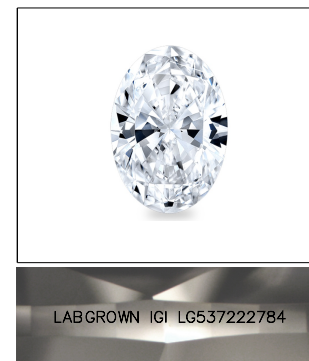


### KEY TO SYMBOLS

Red symbols indicate internal characteristics.  
Green symbols indicate external characteristics.

## GRADING SCALES

|                             |                              |    |                             |                        |                   |           |
|-----------------------------|------------------------------|----|-----------------------------|------------------------|-------------------|-----------|
| COLOR GRADING SCALE         | CL                           |    | NC                          | FT                     | VLT               | LT        |
|                             | COLORLESS D-F                |    | NEAR COLORLESS G-J          | FAINT K-M              | VERY LIGHT N-R    | LIGHT S-Z |
| CLARITY (10x) GRADING SCALE | FL                           | IF | VVS                         | VS                     | SI                | I         |
|                             | FLAWLESS INTERNALLY FLAWLESS |    | VERY VERY SLIGHTLY INCLUDED | VERY SLIGHTLY INCLUDED | SLIGHTLY INCLUDED | INCLUDED  |

LASERSCRIBE<sup>SM</sup>

Sample Image Used



© IGI 2020, International Gemological Institute

FD - 10 20

LABORATORY GROWN DIAMOND REPORT

|                   |                  |
|-------------------|------------------|
| July 7, 2022      |                  |
| IGI Report Number | LG537222784      |
| Description       | LABORATORY GROWN |

Shape and Cutting Style **OVAL BRILLIANT**

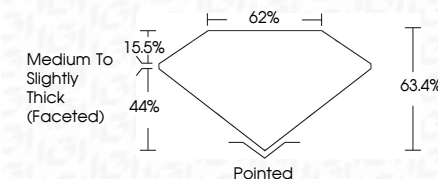
|              |                        |
|--------------|------------------------|
| Measurements | 11.62 X 8.20 X 5.20 MM |
|--------------|------------------------|

## GRADING RESULTS

Carat Weight **3.18 CARATS**

Color Grade

Clarity Grade VS 1



### ADDITIONAL GRADING INFORMATION

Polish **EXCELLENT**

Symmetry **EXCELLENT**

Fluorescence **NONE**

Inscription(s) LABGROWN IGI LG537222784

Comments: This Laboratory Grown Diamond was created by Chemical Vapor Deposition (CVD) growth process and may include post-growth treatment.  
Type IIa



|                         |                         |                                    |           |          |      |                          |   |
|-------------------------|-------------------------|------------------------------------|-----------|----------|------|--------------------------|---|
| July 7, 2022            | GI Report No. GS3722784 | 3.18 CARATS                        | VSI       | Polished | NONE | LAPSWGN151<br>L680722784 | Comments:<br><br>This Laboratory Grown Diamond was created by Chemical Vapor Deposition (CVD) growth process and may include post-growth treatment. |
| GI Report No. GS3722784 | Color Grade             | 63.4%                              | Excellent |          |      |                          |   |
| Color Weight            | Clarity Grade           | 62%                                | Excellent |          |      |                          |   |
| 1.02 X 8.20 X 5.20 MM   | Depth                   | Medium To Slightly Thick (faceted) | Excellent |          |      |                          |   |
|                         | Table                   |                                    |           |          |      |                          |   |
|                         | Girdle                  |                                    |           |          |      |                          | Type IId  |