



ELECTRONIC COPY

LABORATORY GROWN DIAMOND REPORT

August 8, 2022
 IGI Report Number **LG538263246**
 Description **LABORATORY GROWN
DIAMOND**
 Shape and Cutting Style **PRINCESS CUT**
 Measurements **5.89 X 5.77 X 3.94 MM**

GRADING RESULTS

Carat Weight **1.21 CARAT**
 Color Grade **G**
 Clarity Grade **VVS 2**

ADDITIONAL GRADING INFORMATION

Polish **EXCELLENT**
 Symmetry **VERY GOOD**
 Fluorescence **NONE**

Inscription(s) **GROWN IN THE USA
Pat.6,858,078 IGI LG538263246**

Comments:
 As Grown - No indication of post-growth treatment.
 This Laboratory Grown Diamond was created by
 Chemical Vapor Deposition (CVD) process.

Certified
**SUSTAINABILITY RATED
DIAMOND**
 SCS GLOBAL SERVICES

All certified diamonds come with an individual certificate. ONLY available at an accredited retailer



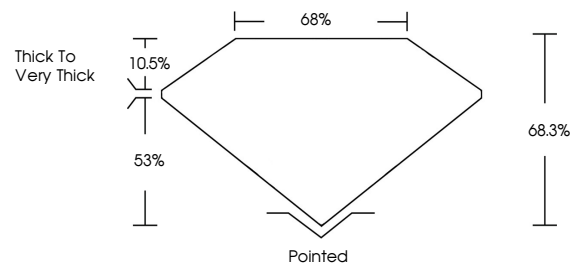
FOR THE SUSTAINABILITY RATED CERTIFICATE, SCAN HERE →

LABORATORY GROWN DIAMOND REPORT

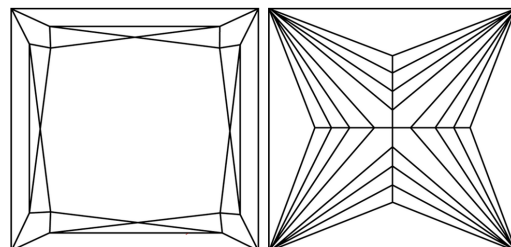
LG538263246

Report verification at igi.org

PROPORTIONS



CLARITY CHARACTERISTICS



KEY TO SYMBOLS

Red symbols indicate internal characteristics.
 Green symbols indicate external characteristics.

**LABORATORY GROWN
DIAMOND REPORT**

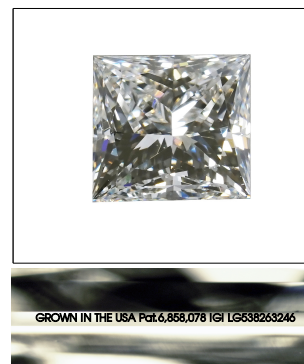
GRADING SCALES

CLARITY

IF	VVS ¹⁻²	VS ¹⁻²	SI ¹⁻²	I ¹⁻³
Internally Flawless	Very Very Slightly Included	Very Slightly Included	Slightly Included	Included

COLOR

D	E	F	G	H	I	J	Faint	Very Light	Light
---	---	---	---	---	---	---	-------	------------	-------

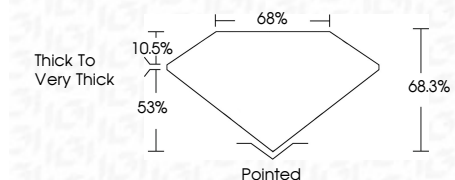


LASERSCRIBESM

Sample Image Used

LABORATORY GROWN DIAMOND REPORT

August 8, 2022
 IGI Report Number **LG538263246**
 Description **LABORATORY GROWN
DIAMOND**
 Shape and Cutting Style **PRINCESS CUT**
 Measurements **5.89 X 5.77 X 3.94 MM**
GRADING RESULTS
 Carat Weight **1.21 CARAT**
 Color Grade **G**
 Clarity Grade **VVS 2**



ADDITIONAL GRADING INFORMATION

Polish **EXCELLENT**
 Symmetry **VERY GOOD**
 Fluorescence **NONE**
 Inscription(s) **GROWN IN THE USA Pat.6,858,078
IGI LG538263246**

Comments:
 As Grown - No indication of post-growth treatment.
 This Laboratory Grown Diamond was created by
 Chemical Vapor Deposition (CVD) process.



IGI

August 8, 2022
 IGI Report No **LG538263246**
PRINCESS CUT
 Carat Weight **1.21 CARAT**
 Color Grade **G**
 Clarity Grade **VVS 2**
 Depth **68.3%**
 Table **68%**
 Grade **Thick to Very Thick**
 Polish **Excellent**
 Symmetry **VERY GOOD**
 Fluorescence **NONE**
 Inscription(s) **GROWN IN THE USA
Pat.6,858,078 IGI**
 Comments:
 As Grown - No indication of post-growth treatment.
 This Laboratory Grown Diamond was created by Chemical Vapor Deposition (CVD) process.