



ELECTRONIC COPY

LABORATORY GROWN DIAMOND REPORT

July 19, 2022

IGI Report Number **LG538287672**

Description	LABORATORY GROWN DIAMOND
-------------	-----------------------------

Shape and Cutting Style **OVAL BRILLIANT**

Measurements 11.68 X 8.31 X 5.16 MM

GRADING RESULTS

Carat Weight **3.22 CARATS**

Color Grade F

Clarity Grade VS 1

ADDITIONAL GRADING INFORMATION

Polish VERY GOOD

Symmetry **EXCELLENT**

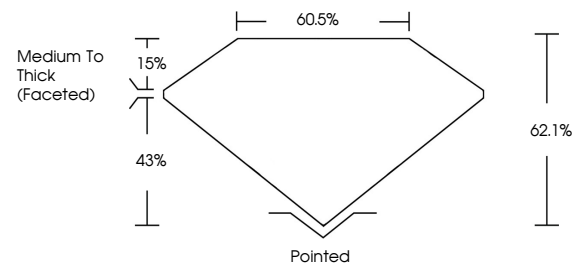
Fluorescence **NONE**

Inscription(s) LABGROWN IGI LG538287672

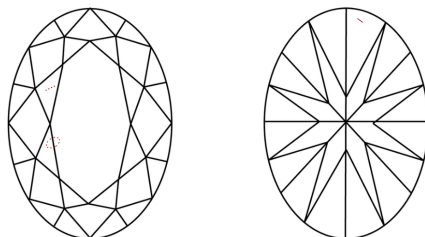
Comments: This Laboratory Grown Diamond was created by Chemical Vapor Deposition (CVD) growth process and may include post-growth treatment.
Type IIa

LG538287672

PROPORTIONS



CLARITY CHARACTERISTICS

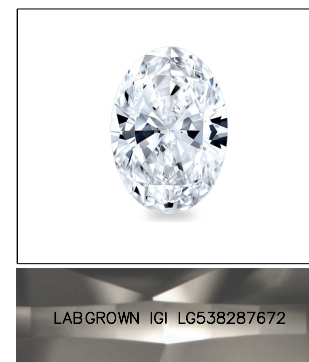


KEY TO SYMBOLS

Red symbols indicate internal characteristics.
Green symbols indicate external characteristics.

GRADING SCALES

COLOR GRADING SCALE	CL		NC	FT	VL	LT
	COLORLESS D-F		NEAR COLORLESS G-J	FAINT K-M	VERY LIGHT N-R	LIGHT S-Z
CLARITY (10x) GRADING SCALE	FL	IF	VVS	VS	SI	I
	FLAWLESS INTERNALLY FLAWLESS		VERY VERY SLIGHTLY INCLUDED	VERY SLIGHTLY INCLUDED	SLIGHTLY INCLUDED	INCLUDED

LASERSCRIBESM

Sample Image Used



© IGI 2020, International Gemological Institute

FD - 10 20

LABORATORY GROWN DIAMOND REPORT

July 19, 2022	
IGI Report Number	LG538287672
Description	LABORATORY GROWN DIAMOND

Shape and Cutting Style **OVAL BRILLIANT**

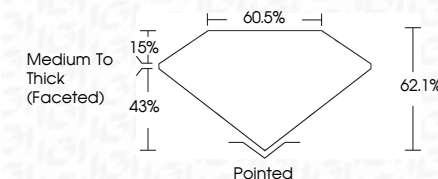
Measurements 11.68 X 8.31 X 5.16 MM

GRADING RESULTS

Carat Weight **3.22 CARATS**

Color Grade F

Clarity Grade VS 1



ADDITIONAL GRADING INFORMATION

Polish VERY GOODSymmetry **EXCELLENT**Fluorescence **NONE**

Inscription(s) LABGROWN IGI LG538287672

Comments: This Laboratory Grown Diamond was created by Chemical Vapor Deposition (CVD) growth process and may include post-growth treatment.
Type IIa



July 19, 2022	3.22 CARATS	Polished
GI Report No. LG36287672	F	VERY GOOD
Color Grade	VS 1	EXCELLENT
Clarity Grade	62.1%	NONE
Depth	60.9%	LAPOROW 101
Table	Medium to Thick	LG36287672
Grade	(Faceted)	
Carat Weight		Comments:
1.08 x 8.31 x 5.16 MM		This Laboratory Grown Diamond was created by Chemical Vapor Deposition (CVD) growth process and may include post-growth treatment.
		Type IId