



ELECTRONIC COPY

LABORATORY GROWN DIAMOND REPORT

July 18, 2022

IGI Report Number **LG538287737**

Description	LABORATORY GROWN DIAMOND
-------------	-----------------------------

Shape and Cutting Style **OVAL BRILLIANT**

Measurements 10.22 X 7.24 X 4.56 MM

GRADING RESULTS

Carat Weight 2.19 CARATS

Color Grade E

Clarity Grade VS 1

ADDITIONAL GRADING INFORMATION

Polish EXCELLENT

Symmetry **EXCELLENT**

Fluorescence **NONE**

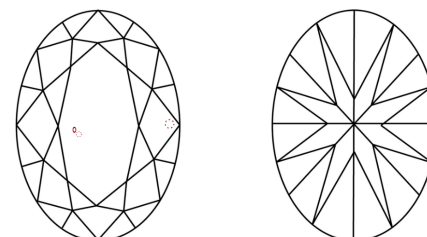
Inscription(s) LABGROWN IGI LG538287737

Comments: This Laboratory Grown Diamond was created by Chemical Vapor Deposition (CVD) growth process and may include post-growth treatment.
Type IIa

Diagram illustrating the proportions of a diamond-shaped stone (LG53828737). The stone is shown with its dimensions and a label indicating its thickness.

- Top Width:** 58.5%
- Bottom Width:** 42.5%
- Height:** 63%
- Top Facet Width:** 15.5%
- Label:** Medium To Slightly Thick (Faceted)
- Pointed Bottom:** Indicated by a small triangle at the bottom center.

CLARITY CHARACTERISTICS

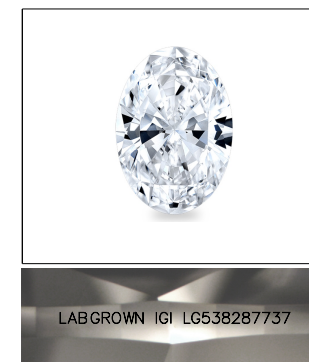


KEY TO SYMBOLS

Red symbols indicate internal characteristics.
Green symbols indicate external characteristics.

GRADING SCALES

COLOR GRADING SCALE	CL		NC		FT		VLT		LT	
	COLORLESS D-F		NEAR COLORLESS G-J		FAINT K-M		VERY LIGHT N-R		LIGHT S-Z	
CLARITY (10x) GRADING SCALE	FL	IF	VVS		VS		SI		I	
	FLAWLESS INTERNALLY FLAWLESS		VERY VERY SLIGHTLY INCLUDED		VERY SLIGHTLY INCLUDED		SLIGHTLY INCLUDED		INCLUDED	

LASERSCRIBESM

Sample Image Used



© IGI 2020, International Gemological Institute

FD - 10 20

LABORATORY GROWN DIAMOND REPORT

July 18, 2022	
IGI Report Number	LG538287737
Description	LABORATORY GROWN

Shape and Cutting Style **OVAL BRILLIANT**

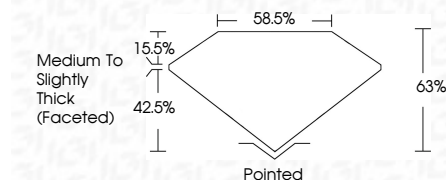
Measurements 10.22 X 7.24 X 4.56 MM

GRADING RESULTS

Carat Weight **2.19 CARATS**

Color Grade E

Clarity Grade VS 1



ADDITIONAL GRADING INFORMATION

Polish **EXCELLENT**Symmetry **EXCELLENT**Fluorescence **NONE**

Inscription(s) LABGROWN IGI LG538287737

Comments: This Laboratory Grown Diamond was created by Chemical Vapor Deposition (CVD) growth process and may include post-growth treatment.
Type IIa



July 14, 2022	Report No. LG58287737
DIAL BRILLIANT	
RT2Z X 7.24 X 4.56 MM	
Carat Weight	2.19 CARATS
Color Grade	E
Clarity Grade	VS 1
Depth	53%
Table	56.5%
Grade	Medium To Slightly Thick (rounded)
Culet	Pointed
Polish	EXCELLENT
Symmetry	EXCELLENT
Fluorescence	NONE
Inscription(s)	LABGROWN (G) LG58287737
Comments:	
This Laboratory Grown Diamond was grown using High Pressure High Temperature (HPHT) growth process and may include post-growth treatment.	
Type IIA	

this Laboratory Grown Diamond was created by Chemical Vapor Deposition (CVD) growth process and may include post-growth treatment.