



**ELECTRONIC COPY**

**LABORATORY GROWN DIAMOND REPORT**

July 26, 2022  
 IGI Report Number **LG538298283**  
 Description **LABORATORY GROWN  
DIAMOND**  
 Shape and Cutting Style **OVAL BRILLIANT**  
 Measurements **9.38 X 6.61 X 4.02 MM**

**GRADING RESULTS**

Carat Weight **1.55 CARAT**  
 Color Grade **D**  
 Clarity Grade **SI 1**

**ADDITIONAL GRADING INFORMATION**

Polish **EXCELLENT**  
 Symmetry **EXCELLENT**  
 Fluorescence **NONE**

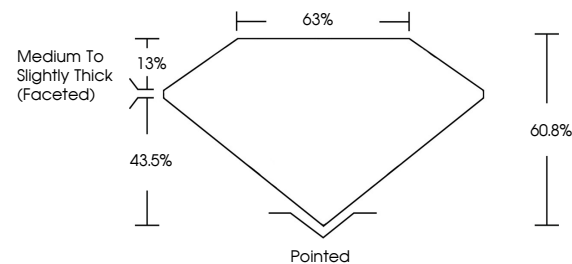
Inscription(s) **LABGROWN IGI LG538298283**

Comments: As Grown - No indication of post-growth treatment.

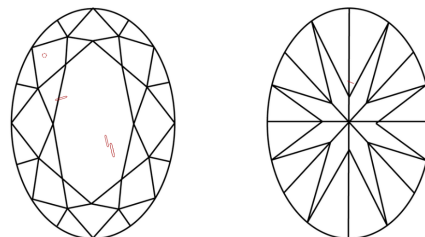
This Laboratory Grown Diamond was created by High Pressure High Temperature (HPHT) growth process. Type II

**LG538298283**

**PROPORTIONS**



**CLARITY CHARACTERISTICS**

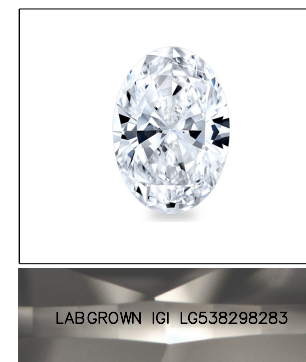


**KEY TO SYMBOLS**

Red symbols indicate internal characteristics.  
 Green symbols indicate external characteristics.

**GRADING SCALES**

| COLOR GRADING SCALE         | CL                           | NC                          | FT                     | VLT               | LT        |   |
|-----------------------------|------------------------------|-----------------------------|------------------------|-------------------|-----------|---|
|                             | COLORLESS D-F                | NEAR COLORLESS G-J          | FAINT K-M              | VERY LIGHT N-R    | LIGHT S-Z |   |
| CLARITY (10x) GRADING SCALE | FL                           | IF                          | VVS                    | VS                | SI        | I |
|                             | FLAWLESS INTERNALLY FLAWLESS | VERY VERY SLIGHTLY INCLUDED | VERY SLIGHTLY INCLUDED | SLIGHTLY INCLUDED | INCLUDED  |   |

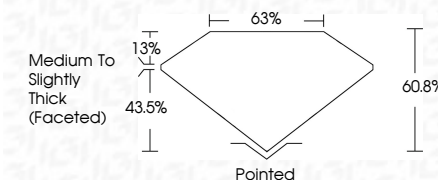


LABGROWN IGI LG538298283

**LASERSCRIBE<sup>SM</sup>**

Sample Image Used

July 26, 2022  
 IGI Report Number **LG538298283**  
 Description **LABORATORY GROWN  
DIAMOND**  
 Shape and Cutting Style **OVAL BRILLIANT**  
 Measurements **9.38 X 6.61 X 4.02 MM**  
**GRADING RESULTS**  
 Carat Weight **1.55 CARAT**  
 Color Grade **D**  
 Clarity Grade **SI 1**



**ADDITIONAL GRADING INFORMATION**

Polish **EXCELLENT**  
 Symmetry **EXCELLENT**  
 Fluorescence **NONE**

Inscription(s) **LABGROWN IGI LG538298283**

Comments: As Grown - No indication of post-growth treatment. This Laboratory Grown Diamond was created by High Pressure High Temperature (HPHT) growth process. Type II



|                           |                           |              |             |               |       |       |                                    |         |           |           |              |                          |   |
|---------------------------|---------------------------|--------------|-------------|---------------|-------|-------|------------------------------------|---------|-----------|-----------|--------------|--------------------------|---|
| July 26, 2022             | IGI Report No LG538298283 | 1.55 CARAT   | D           | SI 1          | 60.8% | 63%   | Medium To Slightly Thick (Faceted) | Pointed | EXCELLENT | EXCELLENT | NONE         | LABGROWN IGI LG538298283 | Comments: As Grown - No indication of post-growth treatment. This Laboratory Grown Diamond was created by High Pressure High Temperature (HPHT) growth process. Type II |
| IGI Report No LG538298283 | OVAL BRILLIANT            | Carat Weight | Color Grade | Clarity Grade | Depth | Table | Grade                              | Culet   | Polish    | Symmetry  | Fluorescence | Inscription(s)           | Comments:   |
| 9.38 X 6.61 X 4.02 MM     |                           |              |             |               |       |       |                                    |         |           |           |              |                          |   |