



ELECTRONIC COPY

LABORATORY GROWN DIAMOND REPORT

July 25, 2022

IGI Report Number **LG539203780**

Description

LABORATORY GROWN
DIAMOND

Shape and Cutting Style **OVAL BRILLIANT**

Measurements 10.11 X 7.12 X 4.51 MM

GRADING RESULTS

Carat Weight **2.09 CARATS**

Color Grade F

Clarity Grade VS 2

ADDITIONAL GRADING INFORMATION

Polish **EXCELLENT**

Symmetry **EXCELLENT**

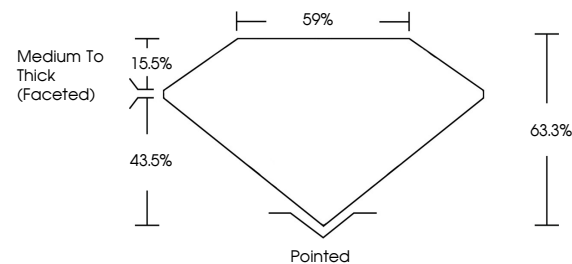
Fluorescence **NONE**

Inscription(s) LABGROWN IGI LG539203780

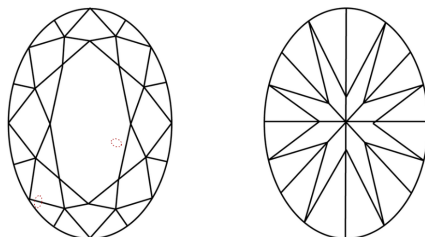
Comments: This Laboratory Grown Diamond was created by Chemical Vapor Deposition (CVD) growth process and may include post-growth treatment.
Type IIa

LG539203780

PROPORTIONS



CLARITY CHARACTERISTICS

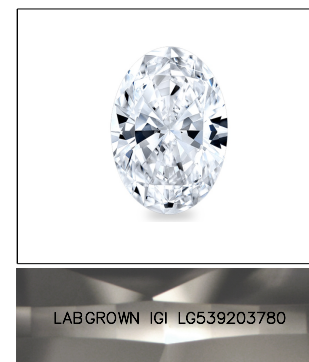


KEY TO SYMBOLS

Red symbols indicate internal characteristics.
Green symbols indicate external characteristics.

GRADING SCALES

COLOR GRADING SCALE	CL		NC	FT	VLT	LT
	COLORLESS D-F		NEAR COLORLESS G-J	FAINT K-M	VERY LIGHT N-R	LIGHT S-Z
CLARITY (10x) GRADING SCALE	FL	IF	VVS	VS	SI	I
	FLAWLESS INTERNALLY FLAWLESS		VERY VERY SLIGHTLY INCLUDED	VERY SLIGHTLY INCLUDED	SLIGHTLY INCLUDED	INCLUDED

LASERSCRIBESM

Sample Image Used



© IGI 2020, International Gemological Institute

FD - 10 20

LABORATORY GROWN DIAMOND REPORT

July 25, 2022	
IGI Report Number	LG539203780
Description	LABORATORY GROWN

Shape and Cutting Style **OVAL BRILLIANT**

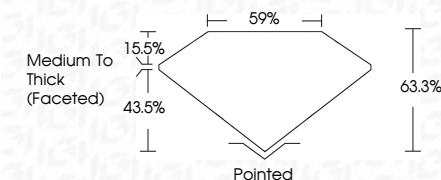
Measurements 10.11 X 7.12 X 4.51 MM

GRADING RESULTS

Carat Weight **2.09 CARATS**

Color Grade F

Clarity Grade VS 2



ADDITIONAL GRADING INFORMATION

Polish **EXCELLENT**

Symmetry **EXCELLENT**

Fluorescence **NONE**

Inscription(s) LABGROWN IGI LG539203780

Comments: This Laboratory Grown Diamond was created by Chemical Vapor Deposition (CVD) growth process and may include post-growth treatment.
Type IIa



July 25, 2022	Carat Weight	2.09 CARATS
GI Report No. LG59203780	Color Grade	F
INTERNAL	Clarity Grade	VS 2
EXTERNAL	Depth	63.3%
TABLE	Table	59%
EDGE	Girdle	Medium to thick (Faceted)
	Culet	Pointed
	Polish	EXCELLENT
	Symmetry	EXCELLENT
	Fluorescence	NONE
	Inscriptions (if any)	Lasermark (G1) LG59203780
	Comments:	This Laboratory Grown Diamond was created by Chemical Vapor Deposition (CVD) growth process and may include post-growth treatment.
	Type Ia	