



ELECTRONIC COPY

LABORATORY GROWN DIAMOND REPORT

July 26, 2022

IGI Report Number **LG539203784**

Description

LABORATORY GROWN
DIAMOND

Shape and Cutting Style **OVAL BRILLIANT**

Measurements 10.77 X 7.76 X 4.87 MM

GRADING RESULTS

Carat Weight **2.67 CARATS**

Color Grade G

Clarity Grade VS 2

ADDITIONAL GRADING INFORMATION

Polish EXCELLENT

Symmetry **EXCELLENT**

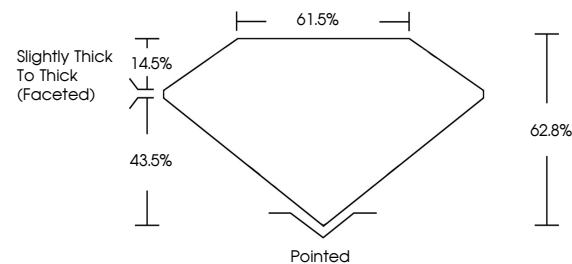
Fluorescence **NONE**

Inscription(s) LABGROWN IGI LG539203784

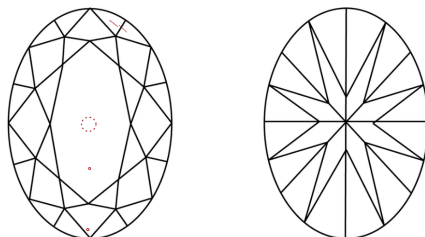
Comments: This Laboratory Grown Diamond was created by Chemical Vapor Deposition (CVD) growth process and may include post-growth treatment.
Type IIa

LG539203784

PROPORTIONS



CLARITY CHARACTERISTICS

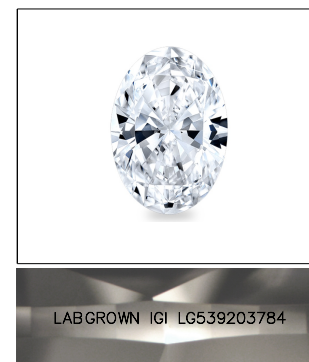


KEY TO SYMBOLS

Red symbols indicate internal characteristics.
Green symbols indicate external characteristics.

GRADING SCALES

COLOR GRADING SCALE	CL		NC	FT	VLT	LT
	COLORLESS D-F		NEAR COLORLESS G-J	FAINT K-M	VERY LIGHT N-R	LIGHT S-Z
CLARITY (10x) GRADING SCALE	FL	IF	VVS	VS	SI	I
	FLAWLESS INTERNALLY FLAWLESS		VERY VERY SLIGHTLY INCLUDED	VERY SLIGHTLY INCLUDED	SLIGHTLY INCLUDED	INCLUDED

LASERSCRIBESM

Sample Image Used



© IGI 2020, International Gemological Institute

FD - 10 20

LABORATORY GROWN DIAMOND REPORT

July 26, 2022	
IGI Report Number	LG539203784
Description	LABORATORY GROWN

Shape and Cutting Style **OVAL BRILLIANT**

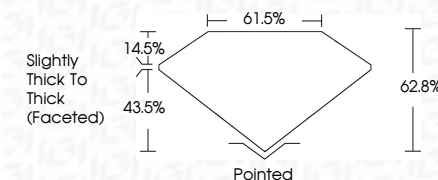
Measurements **10.77 X 7.76 X 4.87 MM**

GRADING RESULTS

Carat Weight **2.67 CARATS**

Color Grade G

Clarity Grade VS 2



ADDITIONAL GRADING INFORMATION

Polish **EXCELLENT**

Symmetry **EXCELLENT**

Fluorescence **NONE**

Inscription(s) LABGROWN IGI LG539203784

Comments: This Laboratory Grown Diamond was created by Chemical Vapor Deposition (CVD) growth process and may include post-growth treatment.
Type IIa



July 26, 2022	GI Report No. LG59203784	
QVAL BRILLIANT		
10.77 X 7.76 X 4.87 MM		
Carat Weight	2.67 CARATS	
Color Grade	G	
Clarity Grade	VS 2	
Depth	62.8%	
Table	61.8%	
Girdle	Slightly Thick to Thick (Faceted)	
Culet	Pointed	
Polish	EXCELLENT	
Symmetry	EXCELLENT	
Fluorescence (reactions)	NONE	
Comments:	LAGOSWIN (a) LG59203784	
<p>This Laboratory Grown Diamond was created by Chemical Vapor Deposition (CVD) growth process and may include post-growth treatment.</p> <p>Type IId</p>		