



**ELECTRONIC COPY**

## LABORATORY GROWN DIAMOND REPORT

July 26, 2022

IGI Report Number **LG539203857**

Description	LABORATORY GROWN DIAMOND
-------------	-----------------------------

Shape and Cutting Style **OVAL BRILLIANT**

Measurements 10.61 X 7.56 X 4.80 MM

## GRADING RESULTS

Carat Weight 2.51 CARATS

Color Grade F

Clarity Grade VS 1

### ADDITIONAL GRADING INFORMATION

Polish **EXCELLENT**

Symmetry **EXCELLENT**

Fluorescence **NONE**

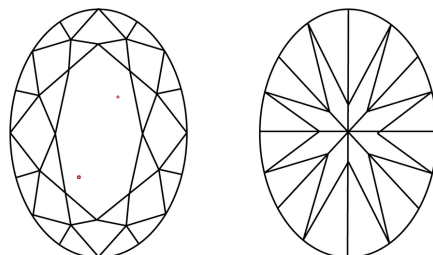
Inscription(s) LABGROWN IGI LG539203857

Comments: This Laboratory Grown Diamond was created by Chemical Vapor Deposition (CVD) growth process and may include post-growth treatment.  
Type IIa

Diagram illustrating the proportions of a faceted diamond, labeled LG539203857. The diagram shows a diamond shape with various measurements and labels:

- Top Label:** LG539203857
- Section Header:** PROPORTIONS
- Left Side Label:** Medium To Slightly Thick (Faceted)
- Top Width Measurement:** 61.5%
- Left Height Measurements:** 15% (top section), 43% (bottom section)
- Right Height Measurement:** 63.5%
- Bottom Label:** Pointed

## CLARITY CHARACTERISTICS

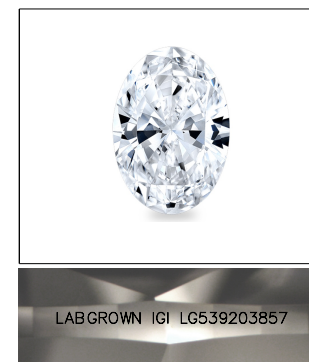


## KEY TO SYMBOLS

Red symbols indicate internal characteristics.  
Green symbols indicate external characteristics.

## GRADING SCALES

COLOR GRADING SCALE	CL		NC	FT	VL	LT
	COLORLESS D-F		NEAR COLORLESS G-J	FAINT K-M	VERY LIGHT N-R	LIGHT S-Z
CLARITY (10x) GRADING SCALE	FL	IF	VVS	VS	SI	I
	FLAWLESS INTERNALLY FLAWLESS		VERY VERY SLIGHTLY INCLUDED	VERY SLIGHTLY INCLUDED	SLIGHTLY INCLUDED	INCLUDED

LASERSCRIBE<sup>SM</sup>

Sample Image Used



© IGI 2020, International Gemological Institute

FD - 10 20

LABORATORY GROWN DIAMOND REPORT

July 26, 2022	
IGI Report Number	LG539203857
Description	LABORATORY GROWN

Shape and Cutting Style **OVAL BRILLIANT**

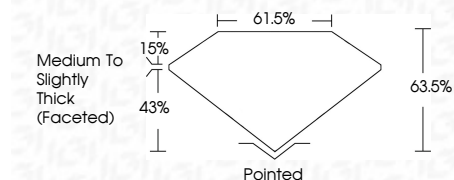
Measurements 10.61 X 7.56 X 4.80 MM

## GRADING RESULTS

Carat Weight **2.51 CARATS**

Color Grade

Clarity Grade VS 1



### ADDITIONAL GRADING INFORMATION

Polish **EXCELLENT**Symmetry **EXCELLENT**Fluorescence **NONE**

Inscription(s) LABGROWN IGI LG539203857

Comments: This Laboratory Grown Diamond was created by Chemical Vapor Deposition (CVD) growth process and may include post-growth treatment.  
Type IIa



July 26, 2022	GJ Report No. LGS9203857
DYAL BRILLIANT	
Rcut X 7.38 X 4.80 MM	2.51 CARATS
Color Weight	F
Clarity Grade	VS 1
Depth	63.5%
Table	61.5%
Girdle	Medium to Slightly Thick (Faceted)
Culet	Poished
Polish	EXCELLENT
Symmetry	EXCELLENT
Fluorescence reactions(3)	NONE
Laserdown ID	LGS9203857
Comments:	
This Laboratory Grown Diamond was created by Chemical Vapor Deposition (CVD) growth process and may include post-growth treatment.	
Type IId	