



**ELECTRONIC COPY**

## LABORATORY GROWN DIAMOND REPORT

July 29, 2022	
IGI Report Number	LG539227268
Description	LABORATORY GROWN DIAMOND
Shape and Cutting Style	CUT CORNERED RECTANGULAR MODIFIED BRILLIANT
Measurements	10.26 X 7.16 X 4.92 MM

## GRADING RESULTS

Carat Weight	3.22 CARATS
Color Grade	D
Clarity Grade	VS 1

### ADDITIONAL GRADING INFORMATION

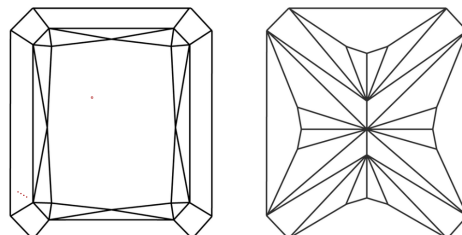
Polish	EXCELLENT
Symmetry	EXCELLENT
Fluorescence	NONE
Inscription(s)	LABGROWN IGI LG539227268

Comments: This Laboratory Grown Diamond was created by Chemical Vapor Deposition (CVD) growth process and may include post-growth treatment.  
Type IIa

Technical drawing of a diamond-shaped tile. The drawing includes the following dimensions and proportions:

- Top Width:** 64.5%
- Left Side Proportions:** 13.5% (top segment), 49.5% (bottom segment). A note indicates the top edge is "Slightly Thick To Thick".
- Right Side Proportion:** 68.7%
- Bottom Feature:** A small notch at the bottom center, labeled "Pointed".

## CLARITY CHARACTERISTICS

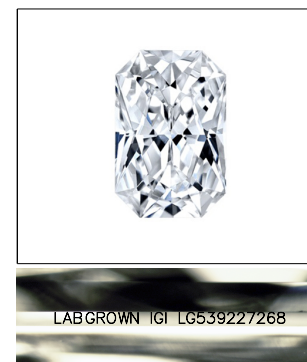


## KEY TO SYMBOLS

Red symbols indicate internal characteristics.  
Green symbols indicate external characteristics.

## GRADING SCALES

COLOR GRADING SCALE	CL		NC	FT	VLT	LT
	COLORLESS D-F		NEAR COLORLESS G-J	FAINT K-M	VERY LIGHT N-R	LIGHT S-Z
CLARITY (10x) GRADING SCALE	FL	IF	VVS	VS	SI	I
	FLAWLESS INTERNALLY FLAWLESS		VERY VERY SLIGHTLY INCLUDED	VERY SLIGHTLY INCLUDED	SLIGHTLY INCLUDED	INCLUDED

LASERSCRIBE<sup>SM</sup>

Sample Image Used



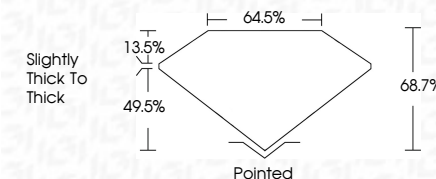
© IGI 2020, International Gemological Institute

FD - 10 20

THIS DOCUMENT WAS PRODUCED WITH THE FOLLOWING SECURITY MEASURES: SPECIAL DOCUMENT PAPER, INK SCREENS, WATERMARK BACKGROUND DESIGNS, HOLOGRAM AND OTHER SECURITY FEATURES NOT LISTED AND DO EXCEED DOCUMENT SECURITY INDUSTRY GUIDELINES

## LABORATORY GROWN DIAMOND REPORT

July 29, 2022	
IGI Report Number	LG539227268
Description	LABORATORY GROWN DIAMOND
Shape and Cutting Style	CUT CORNERED RECTANGULAR MODIFIED BRILLIANT
Measurements	10.26 X 7.16 X 4.92 MM
<b>GRADING RESULTS</b>	
Carat Weight	3.22 CARATS
Color Grade	D
Clarity Grade	VS 1



### ADDITIONAL GRADING INFORMATION

Polish	EXCELLENT
Symmetry	EXCELLENT
Fluorescence	NONE
Inscription(s)	LABGROWN IGI LG539227268

Inscription(s) LABGROWN IGI LG539227268

Comments: This Laboratory Grown Diamond was created by Chemical Vapor Deposition (CVD) growth process and may include post-growth treatment.  
Type IIa



July 29, 2022	GI Permit No. LG59227348	3.22 CARATS	Pointed
STONE COVERED RECD. MODIFIED	Color Grade	VS 1	EXCELLENT
RTX# 7.716 4.92 MM	Clarity Grade	68.7%	EXCELLENT
	Depth	64.6%	NONE
	Table	Slightly Thick to Thick	LARGEST DIM
	Girdle		LG59227348
			Comments:
			This Laboratory Gem Report was created by Chemical Vapor Deposition (CVD) growth process and may include post-growth treatment.
			Type IIA