



ELECTRONIC COPY

LABORATORY GROWN DIAMOND REPORT

July 28, 2022

IGI Report Number **LG539229013**

Description

LABORATORY GROWN
DIAMOND

Shape and Cutting Style **OVAL BRILLIANT**

Measurements 10.25 X 7.28 X 4.58 MM

GRADING RESULTS

Carat Weight **2.23 CARATS**

Color Grade F

Clarity Grade VS 2

ADDITIONAL GRADING INFORMATION

Polish EXCELLENT

Symmetry **VERY GOOD**

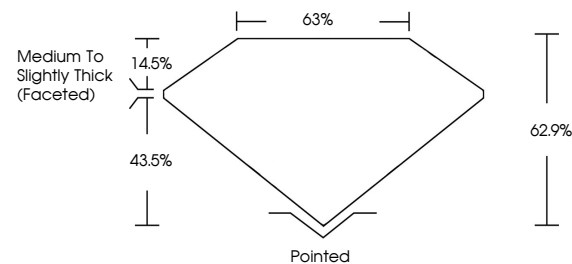
Fluorescence **NONE**

Inscription(s) LABGROWN IGI LG539229013

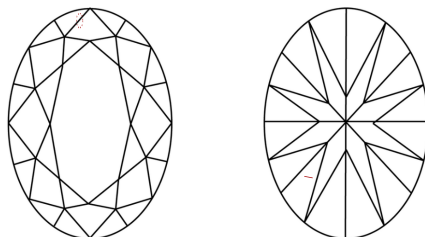
Comments: This Laboratory Grown Diamond was created by Chemical Vapor Deposition (CVD) growth process and may include post-growth treatment.
Type IIa

LG539229013

PROPORTIONS



CLARITY CHARACTERISTICS

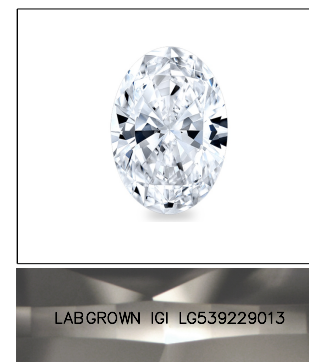


KEY TO SYMBOLS

Red symbols indicate internal characteristics.
Green symbols indicate external characteristics.

GRADING SCALES

COLOR GRADING SCALE	CL		NC	FT	VL	LT
	COLORLESS D-F		NEAR COLORLESS G-J	FAINT K-M	VERY LIGHT N-R	LIGHT S-Z
CLARITY (10x) GRADING SCALE	FL	IF	VVS	VS	SI	I
	FLAWLESS INTERNALLY FLAWLESS		VERY VERY SLIGHTLY INCLUDED	VERY SLIGHTLY INCLUDED	SLIGHTLY INCLUDED	INCLUDED

LASERSCRIBESM

Sample Image Used



© IGI 2020, International Gemological Institute

FD - 10 20

LABORATORY GROWN DIAMOND REPORT

July 28, 2022	
IGI Report Number	LG539229013
Description	LABORATORY GROWN

Shape and Cutting Style **OVAL BRILLIANT**

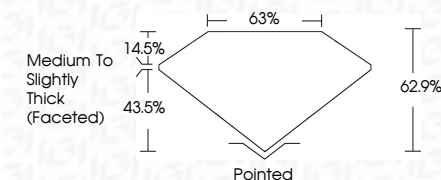
Measurements **10.25 X 7.28 X 4.58 MM**

GRADING RESULTS

Carat Weight **2.23 CARATS**

Color Grade F

Clarity Grade VS 2



ADDITIONAL GRADING INFORMATION

Polish **EXCELLENT**

Symmetry **VERY GOOD**

Fluorescence **NONE**

Inscription(s) LABGROWN IGI LG539229013

Comments: This Laboratory Grown Diamond was created by Chemical Vapor Deposition (CVD) growth process and may include post-growth treatment.
Type IIa

[illegible]