



ELECTRONIC COPY

LABORATORY GROWN DIAMOND REPORT

August 2, 2022
 IGI Report Number **LG539233385**
 Description **LABORATORY GROWN
DIAMOND**
 Shape and Cutting Style **OVAL BRILLIANT**
 Measurements **9.51 X 6.75 X 4.16 MM**

GRADING RESULTS

Carat Weight **1.70 CARAT**
 Color Grade **E**
 Clarity Grade **VS 2**

ADDITIONAL GRADING INFORMATION

Polish **EXCELLENT**
 Symmetry **EXCELLENT**
 Fluorescence **NONE**

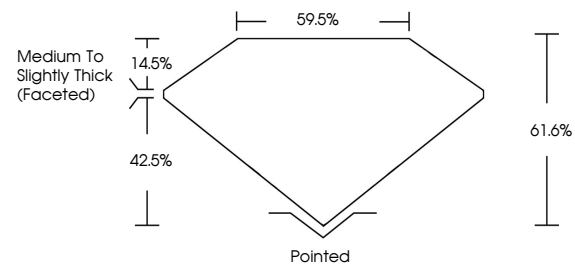
Inscription(s) **LABGROWN IGI LG539233385**

Comments: As Grown - No indication of post-growth treatment.

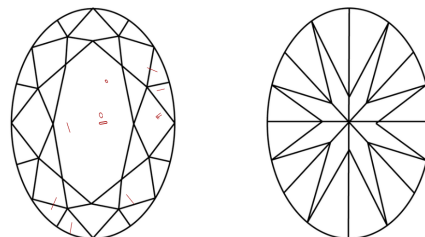
This Laboratory Grown Diamond was created by High Pressure High Temperature (HPHT) growth process. Type II

LG539233385

PROPORTIONS



CLARITY CHARACTERISTICS



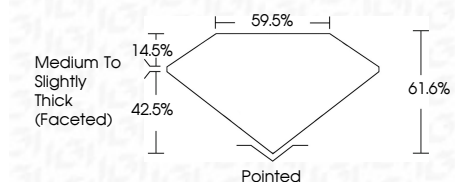
KEY TO SYMBOLS

Red symbols indicate internal characteristics.
 Green symbols indicate external characteristics.

GRADING SCALES

| COLOR GRADING SCALE | CL | NC | FT | VL | LT | |
|-----------------------------|------------------------------|-----------------------------|------------------------|-------------------|-----------|---|
| | COLORLESS D-F | NEAR COLORLESS G-J | FAINT K-M | VERY LIGHT N-R | LIGHT S-Z | |
| CLARITY (10x) GRADING SCALE | FL | IF | VVS | VS | SI | I |
| | FLAWLESS INTERNALLY FLAWLESS | VERY VERY SLIGHTLY INCLUDED | VERY SLIGHTLY INCLUDED | SLIGHTLY INCLUDED | INCLUDED | |

August 2, 2022
 IGI Report Number **LG539233385**
 Description **LABORATORY GROWN
DIAMOND**
 Shape and Cutting Style **OVAL BRILLIANT**
 Measurements **9.51 X 6.75 X 4.16 MM**
GRADING RESULTS
 Carat Weight **1.70 CARAT**
 Color Grade **E**
 Clarity Grade **VS 2**

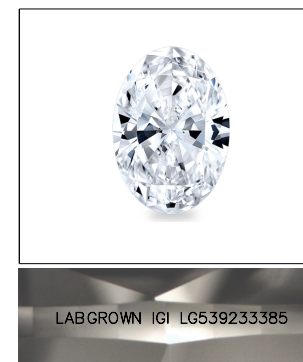


ADDITIONAL GRADING INFORMATION

Polish **EXCELLENT**
 Symmetry **EXCELLENT**
 Fluorescence **NONE**

Inscription(s) **LABGROWN IGI LG539233385**

Comments: As Grown - No indication of post-growth treatment.
 This Laboratory Grown Diamond was created by High Pressure High Temperature (HPHT) growth process. Type II



LABGROWN IGI LG539233385

LASERSCRIBESM

Sample Image Used



IGI

| | | | | | | | | | |
|----------------|---------------------------|------------|------|---------|-----------|-----------|------|--------------------------|---|
| August 2, 2022 | IGI Report No LG539233385 | 1.70 CARAT | E | Pointed | EXCELLENT | EXCELLENT | NONE | LABGROWN IGI LG539233385 | As Grown - No indication of post-growth treatment. |
| OVAL BRILLIANT | 9.51 X 6.75 X 4.16 MM | 1.70 CARAT | VS 2 | Pointed | EXCELLENT | EXCELLENT | NONE | LABGROWN IGI LG539233385 | The Laboratory Grown Diamond was created by High Pressure High Temperature (HPHT) growth process. |
| Carat Weight | 9.51 X 6.75 X 4.16 MM | 1.70 CARAT | VS 2 | Pointed | EXCELLENT | EXCELLENT | NONE | LABGROWN IGI LG539233385 | Type II |
| Color Grade | | 1.70 CARAT | VS 2 | Pointed | EXCELLENT | EXCELLENT | NONE | LABGROWN IGI LG539233385 | |
| Clarity Grade | | 1.70 CARAT | VS 2 | Pointed | EXCELLENT | EXCELLENT | NONE | LABGROWN IGI LG539233385 | |
| Depth | | 1.70 CARAT | VS 2 | Pointed | EXCELLENT | EXCELLENT | NONE | LABGROWN IGI LG539233385 | |
| Table | | 1.70 CARAT | VS 2 | Pointed | EXCELLENT | EXCELLENT | NONE | LABGROWN IGI LG539233385 | |
| Grade | | 1.70 CARAT | VS 2 | Pointed | EXCELLENT | EXCELLENT | NONE | LABGROWN IGI LG539233385 | |
| Culet | | 1.70 CARAT | VS 2 | Pointed | EXCELLENT | EXCELLENT | NONE | LABGROWN IGI LG539233385 | |
| Polish | | 1.70 CARAT | VS 2 | Pointed | EXCELLENT | EXCELLENT | NONE | LABGROWN IGI LG539233385 | |
| Symmetry | | 1.70 CARAT | VS 2 | Pointed | EXCELLENT | EXCELLENT | NONE | LABGROWN IGI LG539233385 | |
| Fluorescence | | 1.70 CARAT | VS 2 | Pointed | EXCELLENT | EXCELLENT | NONE | LABGROWN IGI LG539233385 | |
| Inscription(s) | | 1.70 CARAT | VS 2 | Pointed | EXCELLENT | EXCELLENT | NONE | LABGROWN IGI LG539233385 | |
| Comments: | | 1.70 CARAT | VS 2 | Pointed | EXCELLENT | EXCELLENT | NONE | LABGROWN IGI LG539233385 | |