



**ELECTRONIC COPY**

**LABORATORY GROWN DIAMOND REPORT**

August 9, 2022  
 IGI Report Number **LG541285904**  
 Description **LABORATORY GROWN  
DIAMOND**  
 Shape and Cutting Style **OVAL BRILLIANT**  
 Measurements **9.16 X 6.52 X 4.23 MM**

**GRADING RESULTS**

Carat Weight **1.61 CARAT**  
 Color Grade **F**  
 Clarity Grade **SI 1**

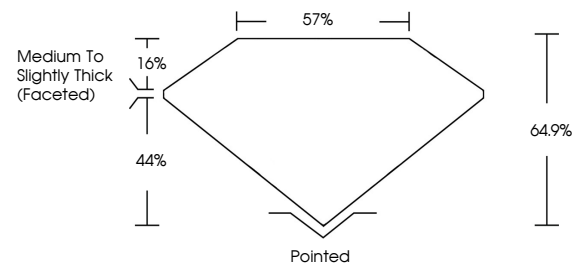
**ADDITIONAL GRADING INFORMATION**

Polish **EXCELLENT**  
 Symmetry **EXCELLENT**  
 Fluorescence **NONE**

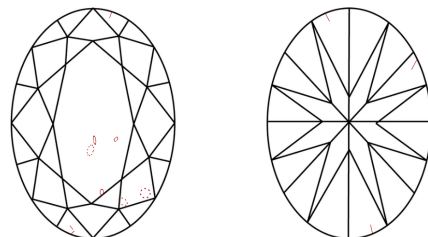
Inscription(s) **LABGROWN IGI LG541285904**  
 Comments: This Laboratory Grown Diamond was created by Chemical Vapor Deposition (CVD) growth process and may include post-growth treatment. Type IIa

**LG541285904**

**PROPORTIONS**



**CLARITY CHARACTERISTICS**

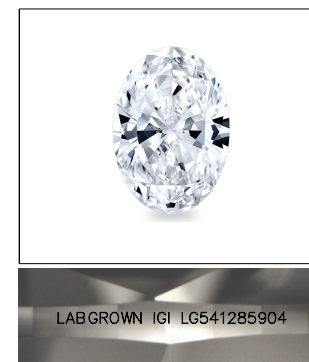


**KEY TO SYMBOLS**

Red symbols indicate internal characteristics.  
 Green symbols indicate external characteristics.

**GRADING SCALES**

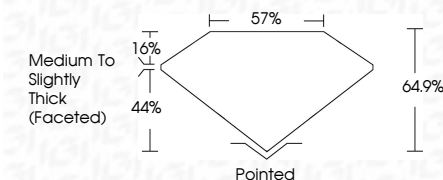
COLOR GRADING SCALE	CL	NC	FT	VLT	LT	
	COLORLESS D-F	NEAR COLORLESS G-J	FAINT K-M	VERY LIGHT N-R	LIGHT S-Z	
CLARITY (10x) GRADING SCALE	FL	IF	VVS	VS	SI	I
	FLAWLESS INTERNALLY FLAWLESS	VERY VERY SLIGHTLY INCLUDED	VERY SLIGHTLY INCLUDED	SLIGHTLY INCLUDED	INCLUDED	



**LASERSCRIBE<sup>SM</sup>**

Sample Image Used

August 9, 2022  
 IGI Report Number **LG541285904**  
 Description **LABORATORY GROWN  
DIAMOND**  
 Shape and Cutting Style **OVAL BRILLIANT**  
 Measurements **9.16 X 6.52 X 4.23 MM**  
**GRADING RESULTS**  
 Carat Weight **1.61 CARAT**  
 Color Grade **F**  
 Clarity Grade **SI 1**



**ADDITIONAL GRADING INFORMATION**

Polish **EXCELLENT**  
 Symmetry **EXCELLENT**  
 Fluorescence **NONE**  
 Inscription(s) **LABGROWN IGI LG541285904**

Comments: This Laboratory Grown Diamond was created by Chemical Vapor Deposition (CVD) growth process and may include post-growth treatment. Type IIa



**IGI**



August 9, 2022	IGI Report No LG541285904	1.61 CARAT	F	SI 1	Pointed	EXCELLENT	EXCELLENT	NONE	LABGROWN IGI LG541285904	The Laboratory Grown Diamond was created by Chemical Vapor Deposition (CVD) growth process and may include post-growth treatment. Type IIa	
IGI Report No LG541285904	OVAL BRILLIANT	9.16 X 6.52 X 4.23 MM	1.61 CARAT	SI 1	Pointed	EXCELLENT	EXCELLENT	NONE	LABGROWN IGI LG541285904		
Carat Weight	Color Grade	Clarity Grade	Depth	Table	Girdle	Culet	Polish	Symmetry	Fluorescence	Inscription(s)	Comments:
1.61 CARAT	F	SI 1	64.9%	57%	Medium To Slightly Thick (Faceted)	Pointed	EXCELLENT	EXCELLENT	NONE	LABGROWN IGI LG541285904	