



**INTERNATIONAL  
GEMOLOGICAL  
INSTITUTE**

**ELECTRONIC COPY**

**LABORATORY GROWN  
DIAMOND REPORT**

**LG544241732**

**IGI LABORATORY GROWN  
DIAMOND ID REPORT**

August 25, 2022  
IGI Report Number **LG544241732**  
**SQUARE CUSHION BRILLIANT**  
**5.30 X 5.04 X 3.49 MM**  
Carat Weight 0.80 CARAT  
Color Grade D  
Clarity Grade VVS 2  
Polish EXCELLENT  
Symmetry EXCELLENT  
Fluorescence NONE  
Inscription(s) LABGROWN IGI  
LG544241732

Comments: As Grown - No indication of post-growth treatment.  
This Laboratory Grown Diamond was created by High Pressure High Temperature (HPHT) growth process.  
Type II

**LABORATORY GROWN DIAMOND REPORT**

**IGI LABORATORY GROWN DIAMOND IDENTIFICATION REPORT**

August 25, 2022  
IGI Report Number LG544241732  
Description LABORATORY GROWN DIAMOND  
Shape and Cutting Style SQUARE CUSHION BRILLIANT  
Measurements 5.30 X 5.04 X 3.49 MM

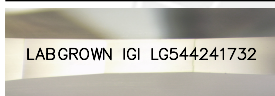
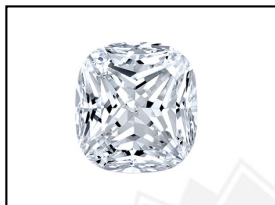
**GRADING RESULTS**

Carat Weight 0.80 CARAT  
Color Grade D  
Clarity Grade VVS 2

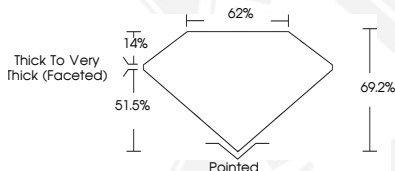
**ADDITIONAL GRADING INFORMATION**

Polish EXCELLENT  
Symmetry EXCELLENT  
Fluorescence NONE  
Inscription(s) LABGROWN IGI LG544241732

Comments: As Grown - No indication of post-growth treatment.  
This Laboratory Grown Diamond was created by High Pressure High Temperature (HPHT) growth process.  
Type II



**LASERSCRIBE<sup>SM</sup>**  
Sample Images Used



THIS DOCUMENT WAS PRODUCED WITH THE FOLLOWING SECURITY MEASURES: SPECIAL DOCUMENT PAPER, INK SCREENS, WATERMARK, BACKGROUND DESIGN, HOLOGRAM AND OTHER SECURITY FEATURES NOT LISTED AND DO EXCEED DOCUMENT SECURITY INDUSTRY GUIDELINES.

For terms & conditions and to verify this report, please visit [www.igi.org](http://www.igi.org)

**IGI LABORATORY GROWN  
DIAMOND ID REPORT**

August 25, 2022  
IGI Report Number **LG544241732**  
**SQUARE CUSHION BRILLIANT**  
**5.30 X 5.04 X 3.49 MM**  
Carat Weight 0.80 CARAT  
Color Grade D  
Clarity Grade VVS 2  
Polish EXCELLENT  
Symmetry EXCELLENT  
Fluorescence NONE  
Inscription(s) LABGROWN IGI  
LG544241732

Comments: As Grown - No indication of post-growth treatment.  
This Laboratory Grown Diamond was created by High Pressure High Temperature (HPHT) growth process.  
Type II