



**ELECTRONIC COPY**

**LABORATORY GROWN DIAMOND REPORT**

October 7, 2022  
 IGI Report Number **LG550244623**  
 Description **LABORATORY GROWN  
DIAMOND**  
 Shape and Cutting Style **CUT CORNERED RECTANGULAR  
MODIFIED BRILLIANT**  
 Measurements **8.72 X 6.34 X 4.22 MM**

**GRADING RESULTS**

Carat Weight **2.00 CARATS**  
 Color Grade **G**  
 Clarity Grade **VVS 2**

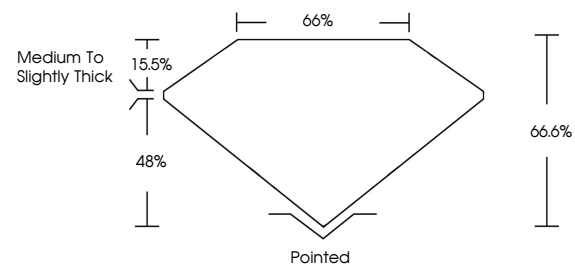
**ADDITIONAL GRADING INFORMATION**

Polish **EXCELLENT**  
 Symmetry **EXCELLENT**  
 Fluorescence **NONE**  
 Inscription(s) **LABGROWN IGI LG550244623**

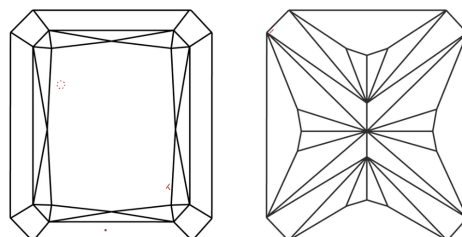
Comments: This Laboratory Grown Diamond was created by Chemical Vapor Deposition (CVD) growth process and may include post-growth treatment. Type IIa

LG550244623

**PROPORTIONS**



**CLARITY CHARACTERISTICS**



**KEY TO SYMBOLS**

Red symbols indicate internal characteristics.  
 Green symbols indicate external characteristics.

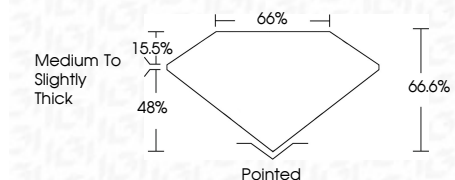
**GRADING SCALES**

| COLOR GRADING SCALE         | CL                           | NC                 | FT                          | VLT                    | LT                |          |
|-----------------------------|------------------------------|--------------------|-----------------------------|------------------------|-------------------|----------|
|                             | COLORLESS D-F                | NEAR COLORLESS G-J | FAINT K-M                   | VERY LIGHT N-R         | LIGHT S-Z         |          |
| CLARITY (10x) GRADING SCALE | FL                           | IF                 | VVS                         | VS                     | SI                | I        |
|                             | FLAWLESS INTERNALLY FLAWLESS | INTERNAL FLAWLESS  | VERY VERY SLIGHTLY INCLUDED | VERY SLIGHTLY INCLUDED | SLIGHTLY INCLUDED | INCLUDED |

October 7, 2022  
 IGI Report Number **LG550244623**  
 Description **LABORATORY GROWN  
DIAMOND**  
 Shape and Cutting Style **CUT CORNERED  
RECTANGULAR MODIFIED  
BRILLIANT**  
 Measurements **8.72 X 6.34 X 4.22 MM**

**GRADING RESULTS**

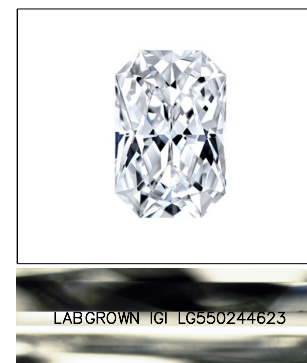
Carat Weight **2.00 CARATS**  
 Color Grade **G**  
 Clarity Grade **VVS 2**



**ADDITIONAL GRADING INFORMATION**

Polish **EXCELLENT**  
 Symmetry **EXCELLENT**  
 Fluorescence **NONE**  
 Inscription(s) **LABGROWN IGI LG550244623**

Comments: This Laboratory Grown Diamond was created by Chemical Vapor Deposition (CVD) growth process and may include post-growth treatment. Type IIa



**LASERSCRIBE<sup>SM</sup>**

Sample Image Used



**IGI**

October 7, 2022  
 IGI Report No **LG550244623**  
**CUT CORNERED RECT. MODIFIED**  
**8.72 X 6.34 X 4.22 MM**  
 Carat Weight **2.00 CARATS**  
 Color Grade **G**  
 Clarity Grade **VVS 2**  
 Depth **66.6%**  
 Table **66%**  
 Girdle **Medium to Slightly Thick**  
 Culet **Pointed**  
 Polish **EXCELLENT**  
 Symmetry **EXCELLENT**  
 Fluorescence **NONE**  
 Inscription(s) **LABGROWN IGI LG550244623**  
 Comments: **This Laboratory Grown Diamond was created by Chemical Vapor Deposition (CVD) growth process and may include post-growth treatment. Type IIa**