



ELECTRONIC COPY

LABORATORY GROWN DIAMOND REPORT

October 15, 2022
IGI Report Number LG551201037
Description LABORATORY GROWN DIAMOND
Shape and Cutting Style ROUND BRILLIANT
Measurements 6.67 - 6.70 X 4.17 MM

GRADING RESULTS

Carat Weight 1.16 CARAT
Color Grade D
Clarity Grade VS 1
Cut Grade IDEAL

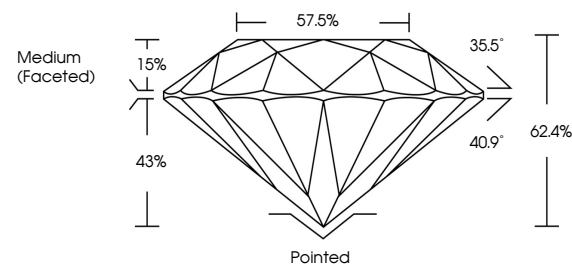
ADDITIONAL GRADING INFORMATION

Polish EXCELLENT
Symmetry EXCELLENT
Fluorescence NONE
Inscription(s) LABGROWN IGI LG551201037

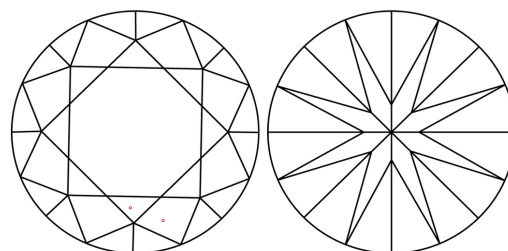
Comments: This Laboratory Grown Diamond was created by Chemical Vapor Deposition (CVD) growth process and may include post-growth treatment. Type IIa

LG551201037

PROPORTIONS



CLARITY CHARACTERISTICS



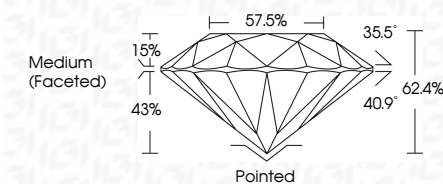
KEY TO SYMBOLS

Red symbols indicate internal characteristics.
Green symbols indicate external characteristics.

GRADING SCALES

Table showing color grading scales (CL, NC, FT, VLT, LT) and clarity (10x) grading scales (FL, IF, VVS, VS, SI, I).

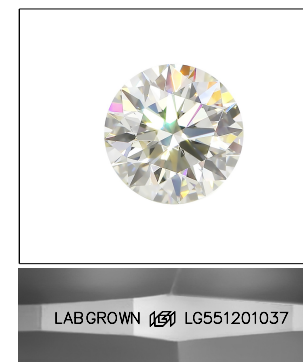
October 15, 2022
IGI Report Number LG551201037
Description LABORATORY GROWN DIAMOND
Shape and Cutting Style ROUND BRILLIANT
Measurements 6.67 - 6.70 X 4.17 MM
GRADING RESULTS
Carat Weight 1.16 CARAT
Color Grade D
Clarity Grade VS 1
Cut Grade IDEAL



ADDITIONAL GRADING INFORMATION

Polish EXCELLENT
Symmetry EXCELLENT
Fluorescence NONE
Inscription(s) LABGROWN IGI LG551201037

Comments: This Laboratory Grown Diamond was created by Chemical Vapor Deposition (CVD) growth process and may include post-growth treatment. Type IIa



LASERSCRIBE SM
Sample Image Used



Summary table of diamond specifications: Date, Report No, Shape, Carat Weight, Color Grade, Clarity Grade, Depth, Table, Girdle, Cut, Polish, Symmetry, Fluorescence, Inscription(s), and Comments.