



**ELECTRONIC COPY**

**LABORATORY GROWN DIAMOND REPORT**

October 14, 2022  
 IGI Report Number **LG551289745**  
 Description **LABORATORY GROWN  
DIAMOND**  
 Shape and Cutting Style **ROUND BRILLIANT**  
 Measurements **8.42 - 8.51 X 5.18 MM**

**GRADING RESULTS**

Carat Weight **2.30 CARATS**  
 Color Grade **G**  
 Clarity Grade **VS 1**  
 Cut Grade **IDEAL**

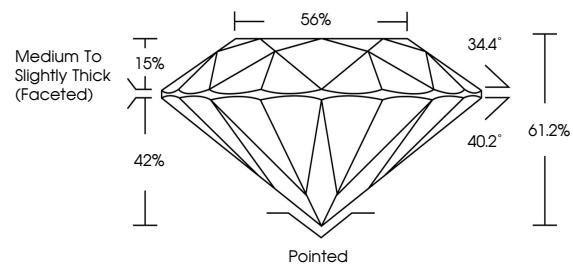
**ADDITIONAL GRADING INFORMATION**

Polish **EXCELLENT**  
 Symmetry **EXCELLENT**  
 Fluorescence **NONE**  
 Inscription(s) **LABGROWN (IGI) LG551289745**

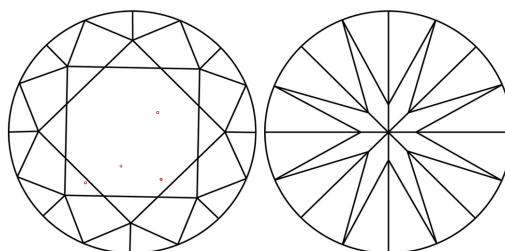
Comments: This Laboratory Grown Diamond was created by Chemical Vapor Deposition (CVD) growth process and may include post-growth treatment. Type IIa

LG551289745

**PROPORTIONS**



**CLARITY CHARACTERISTICS**



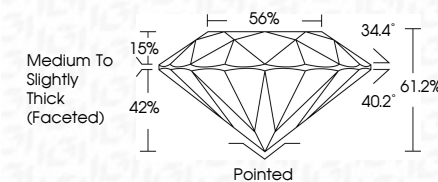
**KEY TO SYMBOLS**

Red symbols indicate internal characteristics.  
 Green symbols indicate external characteristics.

**GRADING SCALES**

COLOR GRADING SCALE	CL	NC	FT	VLT	LT	
	COLORLESS D-F	NEAR COLORLESS G-J	FAINT K-M	VERY LIGHT N-R	LIGHT S-Z	
CLARITY (10x) GRADING SCALE	FL	IF	VVS	VS	SI	I
	FLAWLESS INTERNALLY FLAWLESS	VERY VERY SLIGHTLY INCLUDED	VERY SLIGHTLY INCLUDED	SLIGHTLY INCLUDED	INCLUDED	

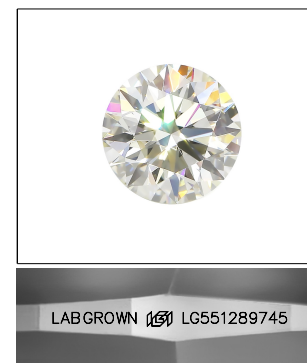
October 14, 2022  
 IGI Report Number **LG551289745**  
 Description **LABORATORY GROWN  
DIAMOND**  
 Shape and Cutting Style **ROUND BRILLIANT**  
 Measurements **8.42 - 8.51 X 5.18 MM**  
**GRADING RESULTS**  
 Carat Weight **2.30 CARATS**  
 Color Grade **G**  
 Clarity Grade **VS 1**  
 Cut Grade **IDEAL**



**ADDITIONAL GRADING INFORMATION**

Polish **EXCELLENT**  
 Symmetry **EXCELLENT**  
 Fluorescence **NONE**  
 Inscription(s) **LABGROWN (IGI) LG551289745**

Comments: This Laboratory Grown Diamond was created by Chemical Vapor Deposition (CVD) growth process and may include post-growth treatment. Type IIa



**LASERSCRIBE<sup>SM</sup>**

Sample Image Used



October 14, 2022	IGI Report No LG551289745	2.30 CARATS	G	VS 1	IDEAL	61.2%	56%	Medium To Slightly Thick (Faceted)	Pointed	EXCELLENT	EXCELLENT	NONE	LABGROWN (IGI) LG551289745
IGI Report No LG551289745	ROUND BRILLIANT	Carat Weight	Color Grade	Clarity Grade	Cut Grade	Depth	Table	Medium To Slightly Thick (Faceted)	Culet	Polish	Symmetry	Fluorescence	Inscription(s)
8.42 - 8.51 X 5.18 MM		2.30 CARATS	G	VS 1	IDEAL	61.2%	56%	Medium To Slightly Thick (Faceted)	Pointed	EXCELLENT	EXCELLENT	NONE	LABGROWN (IGI) LG551289745

Comments: This Laboratory Grown Diamond was created by Chemical Vapor Deposition (CVD) growth process and may include post-growth treatment. Type IIa