



ELECTRONIC COPY

LABORATORY GROWN DIAMOND REPORT

November 5, 2022
 IGI Report Number **LG553235546**
 Description **LABORATORY GROWN
DIAMOND**
 Shape and Cutting Style **CUT CORNERED RECTANGULAR
MODIFIED BRILLIANT**
 Measurements **7.47 X 4.73 X 3.10 MM**

GRADING RESULTS

Carat Weight **1.01 CARAT**
 Color Grade **E**
 Clarity Grade **VVS 2**

ADDITIONAL GRADING INFORMATION

Polish **EXCELLENT**
 Symmetry **EXCELLENT**
 Fluorescence **NONE**

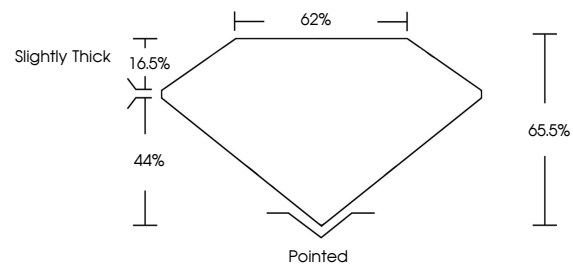
Inscription(s) **LABGROWN (L) LG553235546**

Comments: As Grown - No indication of post-growth treatment.
 This Laboratory Grown Diamond was created by High Pressure High Temperature (HPHT) growth process. Type II

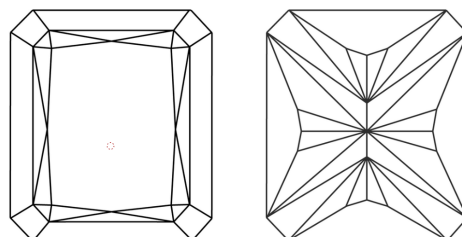
LABORATORY GROWN DIAMOND REPORT

LG553235546
 Report verification at igi.org

PROPORTIONS



CLARITY CHARACTERISTICS



KEY TO SYMBOLS

Red symbols indicate internal characteristics.
 Green symbols indicate external characteristics.

**LABORATORY GROWN
DIAMOND REPORT**

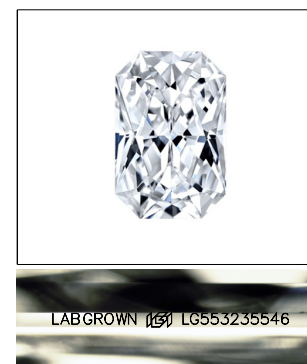
GRADING SCALES

CLARITY

IF	VVS ¹⁻²	VS ¹⁻²	SI ¹⁻²	I ¹⁻³
Internally Flawless	Very Very Slightly Included	Very Slightly Included	Slightly Included	Included

COLOR

D	E	F	G	H	I	J	Faint	Very Light	Light

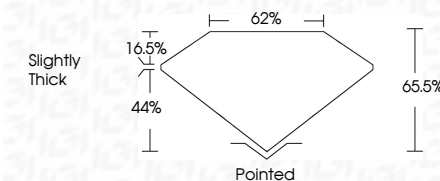


LASERSCRIBESM

Sample Image Used

LABORATORY GROWN DIAMOND REPORT

November 5, 2022
 IGI Report Number **LG553235546**
 Description **LABORATORY GROWN
DIAMOND**
 Shape and Cutting Style **CUT CORNERED
RECTANGULAR MODIFIED
BRILLIANT**
 Measurements **7.47 X 4.73 X 3.10 MM**
GRADING RESULTS
 Carat Weight **1.01 CARAT**
 Color Grade **E**
 Clarity Grade **VVS 2**



ADDITIONAL GRADING INFORMATION

Polish **EXCELLENT**
 Symmetry **EXCELLENT**
 Fluorescence **NONE**
 Inscription(s) **LABGROWN (L) LG553235546**

Comments: As Grown - No indication of post-growth treatment.
 This Laboratory Grown Diamond was created by High Pressure High Temperature (HPHT) growth process. Type II



IGI

November 5, 2022
 IGI Report No **LG553235546**
CUT CORNERED RECT. MODIFIED
7.47 X 4.73 X 3.10 MM
 Carat Weight **1.01 CARAT**
 Color Grade **E**
 Clarity Grade **VVS 2**
 Depth **66.5%**
 Table **62%**
 Girdle **Slightly Thick**
 Culet **Pointed**
 Polish **EXCELLENT**
 Symmetry **EXCELLENT**
 Fluorescence **NONE**
 Inscriptions(s) **LABGROWN (L) LG553235546**
 Comments: No indication of post-growth treatment.
 This Laboratory Grown Diamond was created by High Pressure High Temperature (HPHT) growth process. Type II