



**INTERNATIONAL  
GEMOLOGICAL  
INSTITUTE**

**ELECTRONIC COPY**

**LABORATORY GROWN DIAMOND REPORT**

LG553250867

Report verification at [igi.org](http://igi.org)

**LABORATORY GROWN  
DIAMOND REPORT**

**LABORATORY GROWN DIAMOND REPORT**

**LABORATORY GROWN DIAMOND REPORT**

December 15, 2022  
 IGI Report Number **LG553250867**  
 Description **LABORATORY GROWN  
DIAMOND**  
 Shape and Cutting Style **PRINCESS CUT**  
 Measurements **5.75 X 5.69 X 4.05 MM**

**GRADING RESULTS**

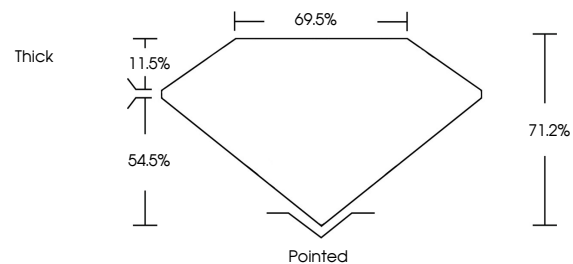
Carat Weight **1.22 CARAT**  
 Color Grade **H**  
 Clarity Grade **VVS 2**  
 Cut Grade **VERY GOOD**

**ADDITIONAL GRADING INFORMATION**

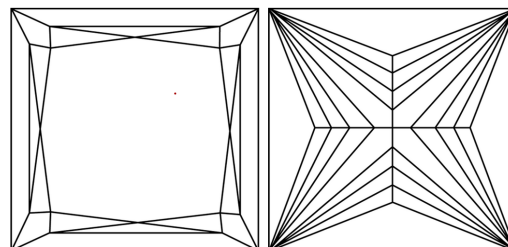
Polish **EXCELLENT**  
 Symmetry **VERY GOOD**  
 Fluorescence **NONE**  
 Inscription(s) **GROWN IN THE USA  
Pat.6,858,078 (US) LG553250867**

Comments: As Grown - No indication of post-growth treatment.  
 This Laboratory Grown Diamond was created by Chemical Vapor Deposition (CVD) process.

**PROPORTIONS**



**CLARITY CHARACTERISTICS**



**KEY TO SYMBOLS**

Red symbols indicate internal characteristics.  
 Green symbols indicate external characteristics.

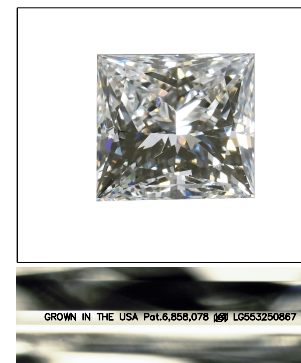
**GRADING SCALES**

**CLARITY**

IF	VVS <sup>1-2</sup>	VS <sup>1-2</sup>	SI <sup>1-2</sup>	I <sup>1-3</sup>
Internally Flawless	Very Very Slightly Included	Very Slightly Included	Slightly Included	Included

**COLOR**

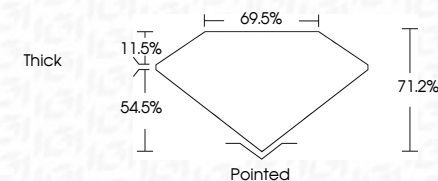
D	E	F	G	H	I	J	Faint	Very Light	Light
---	---	---	---	---	---	---	-------	------------	-------



**LASERSCRIBE<sup>SM</sup>**

Sample Image Used

December 15, 2022  
 IGI Report Number **LG553250867**  
 Description **LABORATORY GROWN  
DIAMOND**  
 Shape and Cutting Style **PRINCESS CUT**  
 Measurements **5.75 X 5.69 X 4.05 MM**  
**GRADING RESULTS**  
 Carat Weight **1.22 CARAT**  
 Color Grade **H**  
 Clarity Grade **VVS 2**  
 Cut Grade **VERY GOOD**



**ADDITIONAL GRADING INFORMATION**

Polish **EXCELLENT**  
 Symmetry **VERY GOOD**  
 Fluorescence **NONE**  
 Inscription(s) **GROWN IN THE USA  
Pat.6,858,078 (US)  
LG553250867**

Comments: As Grown - No indication of post-growth treatment.  
 This Laboratory Grown Diamond was created by Chemical Vapor Deposition (CVD) process.



**IGI**



December 15, 2022  
 IGI Report No. LG553250867  
**PRINCESS CUT**  
 5.75 X 5.69 X 4.05 MM  
 Carat Weight **1.22 CARAT**  
 Color Grade **H**  
 Clarity Grade **VVS 2**  
 Cut Grade **VERY GOOD**  
 Depth **71.2%**  
 Table **69.5%**  
 Girdle **Thick**  
 Culet **Pointed**  
 Polish **EXCELLENT**  
 Symmetry **VERY GOOD**  
 Fluorescence **NONE**  
 Inscription(s) **GROWN IN THE USA  
Pat.6,858,078 (US)  
LG553250867**

Comments: As Grown - No indication of post-growth treatment.  
 This Laboratory Grown Diamond was created by Chemical Vapor Deposition (CVD) process.

