



ELECTRONIC COPY

LABORATORY GROWN DIAMOND REPORT

November 23, 2022
 IGI Report Number **LG557212597**
 Description **LABORATORY GROWN
DIAMOND**
 Shape and Cutting Style **MODIFIED PENTAGON STEP CUT**
 Measurements **7.59 X 7.16 X 4.37 MM**

GRADING RESULTS

Carat Weight **1.29 CARAT**
 Color Grade **E**
 Clarity Grade **VVS 2**

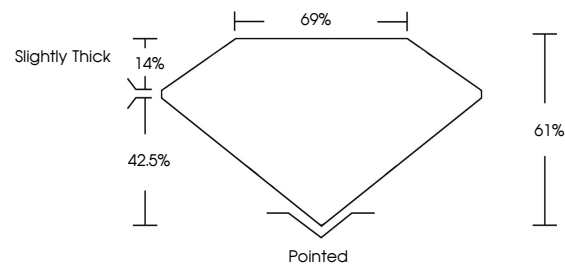
ADDITIONAL GRADING INFORMATION

Polish **EXCELLENT**
 Symmetry **EXCELLENT**
 Fluorescence **NONE**

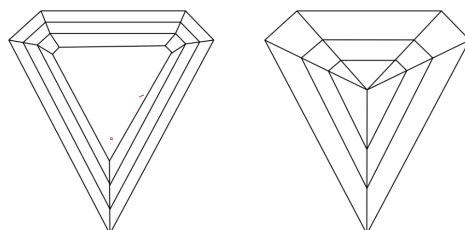
Inscription(s) **LABGROWN (LGI) LG557212597**

Comments: This Laboratory Grown Diamond was created by Chemical Vapor Deposition (CVD) growth process and may include post-growth treatment. Type IIa

PROPORTIONS



CLARITY CHARACTERISTICS



KEY TO SYMBOLS

Red symbols indicate internal characteristics.
 Green symbols indicate external characteristics.

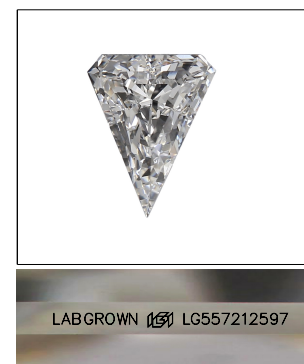
GRADING SCALES

CLARITY

IF	VVS 1-2	VS 1-2	SI 1-2	I 1-3
Internally Flawless	Very Very Slightly Included	Very Slightly Included	Slightly Included	Included

COLOR

D	E	F	G	H	I	J	Faint	Very Light	Light



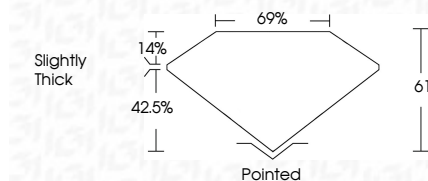
LASERSCRIBESM

Sample Image Used

November 23, 2022
 IGI Report Number **LG557212597**
 Description **LABORATORY GROWN
DIAMOND**
 Shape and Cutting Style **MODIFIED PENTAGON STEP CUT**
 Measurements **7.59 X 7.16 X 4.37 MM**

GRADING RESULTS

Carat Weight **1.29 CARAT**
 Color Grade **E**
 Clarity Grade **VVS 2**



ADDITIONAL GRADING INFORMATION

Polish **EXCELLENT**
 Symmetry **EXCELLENT**
 Fluorescence **NONE**
 Inscription(s) **LABGROWN (LGI) LG557212597**

Comments: This Laboratory Grown Diamond was created by Chemical Vapor Deposition (CVD) growth process and may include post-growth treatment. Type IIa



IGI

November 23, 2022
 IGI Report No LG557212597
MODIFIED PENTAGON STEP CUT
 7.59 X 7.16 X 4.37 MM
 Carat Weight 1.29 CARAT
 Color Grade E
 Clarity Grade VVS 2
 Depth 61%
 Table 69%
 Girdle Slightly Thick
 Culet Pointed
 Polish EXCELLENT
 Symmetry EXCELLENT
 Fluorescence NONE
 Inscription(s) LABGROWN (LGI) LG557212597
 Comments: This Laboratory Grown Diamond was created by Chemical Vapor Deposition (CVD) growth process and may include post-growth treatment. Type IIa