



**ELECTRONIC COPY**

## LABORATORY GROWN DIAMOND REPORT

November 24, 2022	
IGI Report Number	LG557217876
Description	LABORATORY GROWN DIAMOND
Shape and Cutting Style	SQUARE EMERALD CUT
Measurements	6.99 X 6.92 X 4.65 MM

## GRADING RESULTS

Carat Weight	2.13 CARATS
Color Grade	H
Clarity Grade	VS 1

### ADDITIONAL GRADING INFORMATION

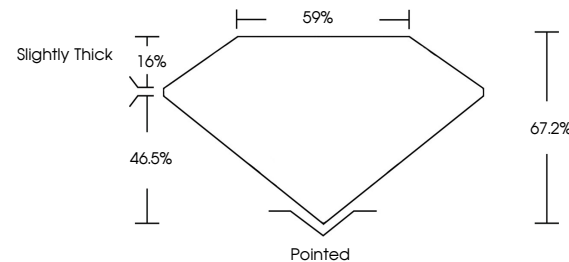
Polish	EXCELLENT
Symmetry	EXCELLENT
Fluorescence	NONE

Inscription(s) **LABGROWN  LG557217876**  
 Comments: This Laboratory Grown Diamond was created by Chemical Vapor Deposition (CVD) growth process and may include post-growth treatment.  
 Type IIa

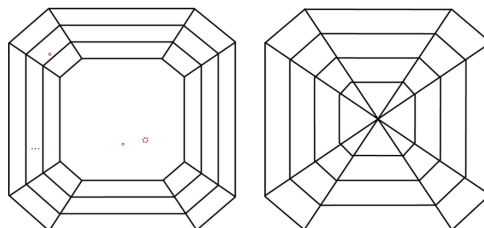
## LABORATORY GROWN DIAMOND REPORT

LG557217876  
Report verification at lgi.org

## PROPORTIONS



## CLARITY CHARACTERISTICS



### KEY TO SYMBOLS

Red symbols indicate internal characteristics.  
Green symbols indicate external characteristics.

LABORATORY GROWN  
DIAMOND REPORT

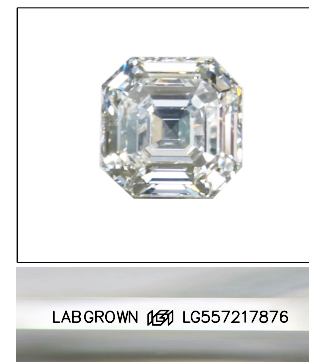
## GRADING SCALES

## CLARITY

IF	VVS <sup>1-2</sup>	VS <sup>1-2</sup>	SI <sup>1-2</sup>	I <sup>1-3</sup>
Internally Flawless	Very Very Slightly Included	Very Slightly Included	Slightly Included	Included

**COLOR**

D E F G H I J Faint Very Light Light

LASERSCRIBE<sup>SM</sup>

Sample Image Used



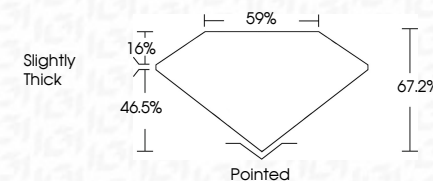
© IGI 2020, International Gemological Institute

FD - 10 20

**www.igi.org**

## LABORATORY GROWN DIAMOND REPORT

November 24, 2022	
IGI Report Number	LG557217876
Description	LABORATORY GROWN DIAMOND
Shape and Cutting Style	SQUARE EMERALD CUT
Measurements	6.99 X 6.92 X 4.65 MM
<b>GRADING RESULTS</b>	
Carat Weight	2.13 CARATS
Color Grade	H
Clarity Grade	VS 1



### ADDITIONAL GRADING INFORMATION

Polish	EXCELLENT
Symmetry	EXCELLENT
Fluorescence	NONE
Inscription(s)	LABGROWN (15) LG557217876

Comments: This Laboratory Grown Diamond was created by Chemical Vapor Deposition (CVD) growth process and may include post-growth treatment.  
Type IIa



November 24, 2022	213 CABATS
IGI Report No. GS17/1876	H
SQUARE EMERALD CUT	VS1
	67.2%
	65%
	Slightly Thick
	Pointed
	EXCELLENT
	EXCELLENT
	NONE
	LARGROWN, LG LS65217676

Comments:  
 1. Laboratory Grown Diamond was created by Chemical Vapor Deposition (CVD) growth process and may include some surface growth treatment.

**Comments:**  
This Laboratory Grown Diamond was created by Chemical Vapor Deposition (CVD) growth process and may include post-growth treatment.