



**INTERNATIONAL
GEMOLOGICAL
INSTITUTE**

ELECTRONIC COPY

LABORATORY GROWN DIAMOND REPORT

January 4, 2023
 IGI Report Number **LG557237983**
 Description **LABORATORY GROWN
DIAMOND**
 Shape and Cutting Style **ROUND BRILLIANT**
 Measurements **6.65 - 6.69 X 4.06 MM**

GRADING RESULTS

Carat Weight **1.07 CARAT**
 Color Grade **H**
 Clarity Grade **VS 1**
 Cut Grade **EXCELLENT**

ADDITIONAL GRADING INFORMATION

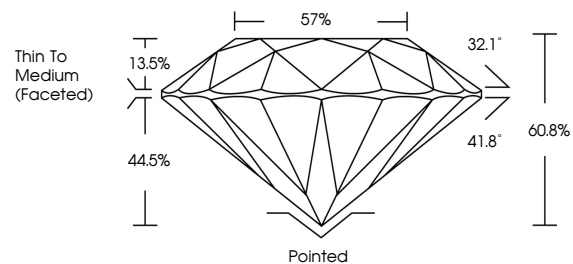
Polish **EXCELLENT**
 Symmetry **EXCELLENT**
 Fluorescence **NONE**
 Inscription(s) **GROWN IN THE USA
Pat.6,858,078 (IGI) LG557237983**

Comments: As Grown - No indication of post-growth treatment.
 This Laboratory Grown Diamond was created by Chemical Vapor Deposition (CVD) growth process.
 Faint Color

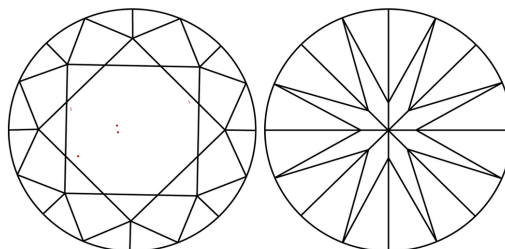
LABORATORY GROWN DIAMOND REPORT

LG557237983
 Report verification at igi.org

PROPORTIONS



CLARITY CHARACTERISTICS



KEY TO SYMBOLS

Red symbols indicate internal characteristics.
 Green symbols indicate external characteristics.

**LABORATORY GROWN
DIAMOND REPORT**

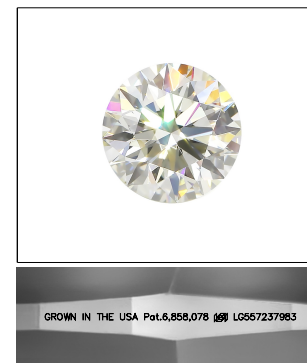
GRADING SCALES

CLARITY

IF	VVS ¹⁻²	VS ¹⁻²	SI ¹⁻²	I ¹⁻³
Internally Flawless	Very Very Slightly Included	Very Slightly Included	Slightly Included	Included

COLOR

D	E	F	G	H	I	J	Faint	Very Light	Light
---	---	---	---	---	---	---	-------	------------	-------

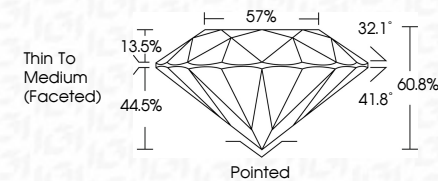


LASERSCRIBESM

Sample Image Used

LABORATORY GROWN DIAMOND REPORT

January 4, 2023
 IGI Report Number **LG557237983**
 Description **LABORATORY GROWN
DIAMOND**
 Shape and Cutting Style **ROUND BRILLIANT**
 Measurements **6.65 - 6.69 X 4.06 MM**
GRADING RESULTS
 Carat Weight **1.07 CARAT**
 Color Grade **H**
 Clarity Grade **VS 1**
 Cut Grade **EXCELLENT**



ADDITIONAL GRADING INFORMATION

Polish **EXCELLENT**
 Symmetry **EXCELLENT**
 Fluorescence **NONE**
 Inscription(s) **GROWN IN THE USA
Pat.6,858,078 (IGI)
LG557237983**

Comments: As Grown - No indication of post-growth treatment.
 This Laboratory Grown Diamond was created by Chemical Vapor Deposition (CVD) growth process.
 Faint Color



IGI

January 4, 2023
 IGI Report No **LG557237983**
ROUND BRILLIANT
6.65 - 6.69 X 4.06 MM
 Carat Weight **1.07 CARAT**
 Color Grade **H**
 Clarity Grade **VS 1**
 Cut Grade **EXCELLENT**
 Depth **60.8%**
 Table **57%**
 Girdle **Thin To Medium (Faceted)**
 Culet **Pointed**
 Polish **EXCELLENT**
 Symmetry **EXCELLENT**
 Fluorescence **NONE**
 Inscription(s) **GROWN IN THE USA
Pat.6,858,078 (IGI)
LG557237983**
 Comments: **As Grown - No indication of post-growth treatment.**
 This Laboratory Grown Diamond was created by Chemical Vapor Deposition (CVD) growth process.
 Faint Color

