



ELECTRONIC COPY

LABORATORY GROWN DIAMOND REPORT

LG561265875

Report verification at igi.org

**LABORATORY GROWN
DIAMOND REPORT**

LABORATORY GROWN DIAMOND REPORT

LABORATORY GROWN DIAMOND REPORT

December 27, 2022
 IGI Report Number **LG561265875**
 Description **LABORATORY GROWN
DIAMOND**
 Shape and Cutting Style **MODIFIED PENTAGON STEP CUT**
 Measurements **9.15 X 8.18 X 5.04 MM**

GRADING RESULTS

Carat Weight **2.03 CARATS**
 Color Grade **F**
 Clarity Grade **VS 1**

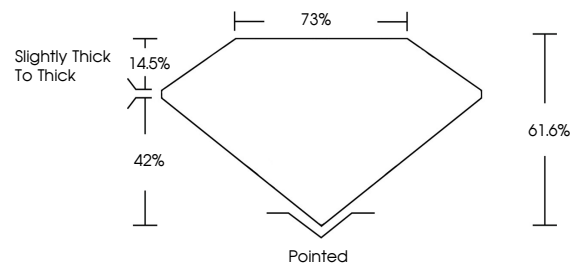
ADDITIONAL GRADING INFORMATION

Polish **EXCELLENT**
 Symmetry **EXCELLENT**
 Fluorescence **NONE**

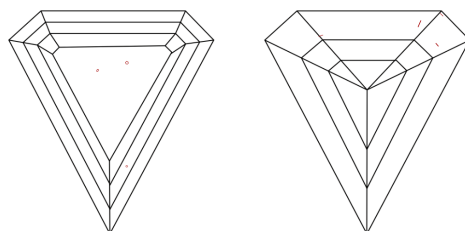
Inscription(s) **LABGROWN (LGI) LG561265875**

Comments: This Laboratory Grown Diamond was created by Chemical Vapor Deposition (CVD) growth process and may include post-growth treatment. Type IIa

PROPORTIONS



CLARITY CHARACTERISTICS



KEY TO SYMBOLS

Red symbols indicate internal characteristics.
 Green symbols indicate external characteristics.

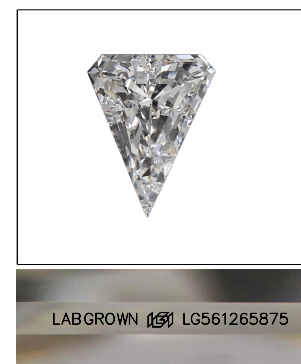
GRADING SCALES

CLARITY

IF	VVS ¹⁻²	VS ¹⁻²	SI ¹⁻²	I ¹⁻³
Internally Flawless	Very Very Slightly Included	Very Slightly Included	Slightly Included	Included

COLOR

D	E	F	G	H	I	J	Faint	Very Light	Light
---	---	---	---	---	---	---	-------	------------	-------



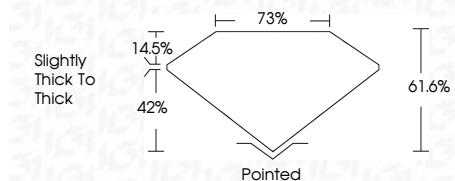
LASERSCRIBESM

Sample Image Used

December 27, 2022
 IGI Report Number **LG561265875**
 Description **LABORATORY GROWN
DIAMOND**
 Shape and Cutting Style **MODIFIED PENTAGON STEP
CUT**
 Measurements **9.15 X 8.18 X 5.04 MM**

GRADING RESULTS

Carat Weight **2.03 CARATS**
 Color Grade **F**
 Clarity Grade **VS 1**



ADDITIONAL GRADING INFORMATION

Polish **EXCELLENT**
 Symmetry **EXCELLENT**
 Fluorescence **NONE**
 Inscription(s) **LABGROWN (LGI) LG561265875**

Comments: This Laboratory Grown Diamond was created by Chemical Vapor Deposition (CVD) growth process and may include post-growth treatment. Type IIa



IGI

December 27, 2022
 IGI Report No LG561265875
MODIFIED PENTAGON STEP CUT
 9.15 X 8.18 X 5.04 MM
 2.03 CARATS
 Carat Weight
 Color Grade **F**
 Clarity Grade **VS 1**
 Depth **61.6%**
 Table **75%**
 Girdle **Slightly Thick To Thick**
 Culet **Pointed**
 Polish **EXCELLENT**
 Symmetry **EXCELLENT**
 Fluorescence **NONE**
 Inscription(s) **LABGROWN (LGI) LG561265875**
 Comments: This Laboratory Grown Diamond was created by Chemical Vapor Deposition (CVD) growth process and may include post-growth treatment. Type IIa