



**ELECTRONIC COPY**

LABORATORY GROWN DIAMOND REPORT

LG561275326

Report verification at igi.org

LABORATORY GROWN  
DIAMOND REPORT

LABORATORY GROWN DIAMOND REPORT

LABORATORY GROWN DIAMOND REPORT

January 25, 2023  
IGI Report Number **LG561275326**  
Description **LABORATORY GROWN  
DIAMOND**  
Shape and Cutting Style **OVAL BRILLIANT**  
Measurements **8.17 X 5.83 X 3.59 MM**

**GRADING RESULTS**

Carat Weight **1.07 CARAT**  
Color Grade **D**  
Clarity Grade **VVS 2**

**ADDITIONAL GRADING INFORMATION**

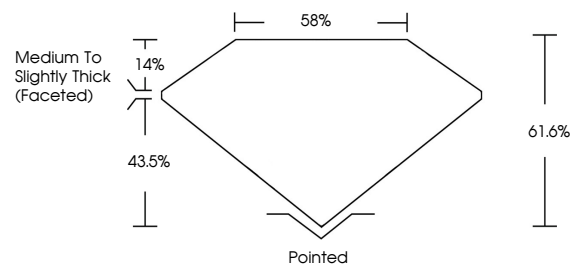
Polish **EXCELLENT**  
Symmetry **EXCELLENT**  
Fluorescence **NONE**

Inscription(s) **LABGROWN (L) LG561275326**

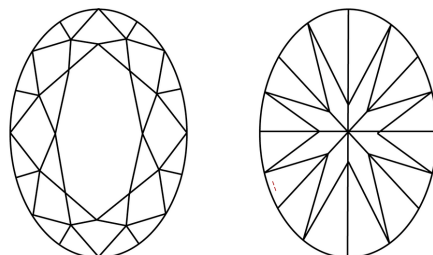
Comments: As Grown - No indication of post-growth treatment.

This Laboratory Grown Diamond was created by High Pressure High Temperature (HPHT) growth process. Type II

**PROPORTIONS**



**CLARITY CHARACTERISTICS**



**KEY TO SYMBOLS**

Red symbols indicate internal characteristics.  
Green symbols indicate external characteristics.

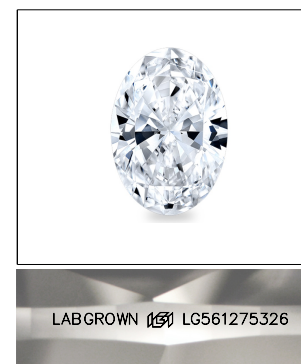
**GRADING SCALES**

**CLARITY**

IF	VVS <sup>1-2</sup>	VS <sup>1-2</sup>	SI <sup>1-2</sup>	I <sup>1-3</sup>
Internally Flawless	Very Very Slightly Included	Very Slightly Included	Slightly Included	Included

**COLOR**

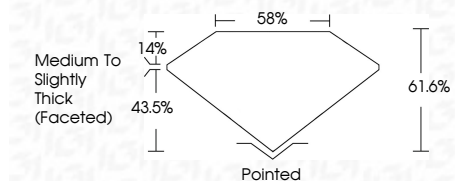
D	E	F	G	H	I	J	Faint	Very Light	Light
---	---	---	---	---	---	---	-------	------------	-------



LASERSCRIBE<sup>SM</sup>

Sample Image Used

January 25, 2023  
IGI Report Number **LG561275326**  
Description **LABORATORY GROWN  
DIAMOND**  
Shape and Cutting Style **OVAL BRILLIANT**  
Measurements **8.17 X 5.83 X 3.59 MM**  
**GRADING RESULTS**  
Carat Weight **1.07 CARAT**  
Color Grade **D**  
Clarity Grade **VVS 2**



**ADDITIONAL GRADING INFORMATION**

Polish **EXCELLENT**  
Symmetry **EXCELLENT**  
Fluorescence **NONE**  
Inscription(s) **LABGROWN (L) LG561275326**

Comments: As Grown - No indication of post-growth treatment.  
This Laboratory Grown Diamond was created by High Pressure High Temperature (HPHT) growth process. Type II



**IGI**

January 25, 2023  
IGI Report No LG561275326  
**OVAL BRILLIANT**  
Carat Weight **1.07 CARAT**  
Color Grade **D**  
Clarity Grade **VVS 2**  
Depth **61.6%**  
Table **58%**  
Girdle **Medium to Slightly Thick (Faceted)**  
Culet **Pointed**  
Polish **EXCELLENT**  
Symmetry **EXCELLENT**  
Fluorescence **NONE**  
Inscription(s) **LABGROWN (L) LG561275326**

Comments: As Grown - No indication of post-growth treatment.  
This Laboratory Grown Diamond was created by High Pressure High Temperature (HPHT) growth process. Type II