



ELECTRONIC COPY

LABORATORY GROWN DIAMOND REPORT

LG566398210

Report verification at igi.org

**LABORATORY GROWN
DIAMOND REPORT**

LABORATORY GROWN DIAMOND REPORT

LABORATORY GROWN DIAMOND REPORT

February 1, 2023
IGI Report Number **LG566398210**
Description **LABORATORY GROWN
DIAMOND**
Shape and Cutting Style **ROUND BRILLIANT**
Measurements **6.83 - 6.85 X 4.06 MM**

GRADING RESULTS

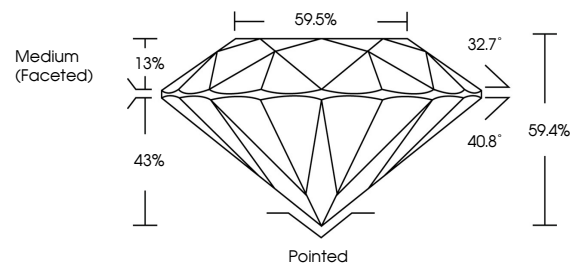
Carat Weight **1.15 CARAT**
Color Grade **F**
Clarity Grade **VS 1**
Cut Grade **EXCELLENT**

ADDITIONAL GRADING INFORMATION

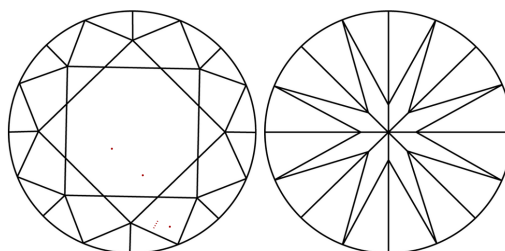
Polish **EXCELLENT**
Symmetry **EXCELLENT**
Fluorescence **NONE**
Inscription(s) **LABGROWN (L) LG566398210**

Comments: This Laboratory Grown Diamond was created by Chemical Vapor Deposition (CVD) growth process and may include post-growth treatment. Type IIa

PROPORTIONS



CLARITY CHARACTERISTICS



KEY TO SYMBOLS

Red symbols indicate internal characteristics.
Green symbols indicate external characteristics.

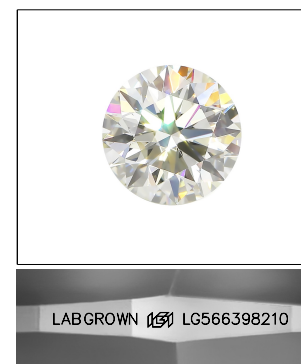
GRADING SCALES

CLARITY

| IF | VVS ¹⁻² | VS ¹⁻² | SI ¹⁻² | I ¹⁻³ |
|---------------------|-----------------------------|------------------------|-------------------|------------------|
| Internally Flawless | Very Very Slightly Included | Very Slightly Included | Slightly Included | Included |

COLOR

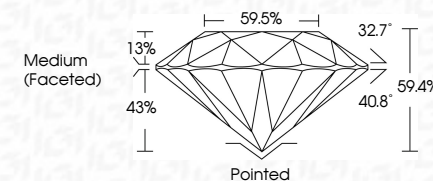
| D | E | F | G | H | I | J | Faint | Very Light | Light |
|---|---|---|---|---|---|---|-------|------------|-------|
|---|---|---|---|---|---|---|-------|------------|-------|



LASERSCRIBESM

Sample Image Used

February 1, 2023
IGI Report Number **LG566398210**
Description **LABORATORY GROWN
DIAMOND**
Shape and Cutting Style **ROUND BRILLIANT**
Measurements **6.83 - 6.85 X 4.06 MM**
GRADING RESULTS
Carat Weight **1.15 CARAT**
Color Grade **F**
Clarity Grade **VS 1**
Cut Grade **EXCELLENT**



ADDITIONAL GRADING INFORMATION

Polish **EXCELLENT**
Symmetry **EXCELLENT**
Fluorescence **NONE**
Inscription(s) **LABGROWN (L) LG566398210**

Comments: This Laboratory Grown Diamond was created by Chemical Vapor Deposition (CVD) growth process and may include post-growth treatment. Type IIa



IGI

| | | | | | | | | | | | | | | | |
|--|---------------------------|-----------------|-----------------------|------------|---|------|-----------|-------|-------|------------------|---------|-----------|-----------|------|--------------------------|
| February 1, 2023 | IGI Report No LG566398210 | ROUND BRILLIANT | 6.83 - 6.85 X 4.06 MM | 1.15 CARAT | F | VS 1 | EXCELLENT | 59.4% | 59.5% | Medium (Faceted) | Pointed | EXCELLENT | EXCELLENT | NONE | LABGROWN (L) LG566398210 |
| <p>Comments: This Laboratory Grown Diamond was created by Chemical Vapor Deposition (CVD) growth process and may include post-growth treatment. Type IIa</p> | | | | | | | | | | | | | | | |