



ELECTRONIC COPY

LG572332568

Report verification at igi.org

LABORATORY GROWN DIAMOND REPORT

March 28, 2023
 IGI Report Number **LG572332568**
 Description **LABORATORY GROWN
DIAMOND**
 Shape and Cutting Style **ROUND BRILLIANT**
 Measurements **7.72 - 7.78 X 4.72 MM**

GRADING RESULTS

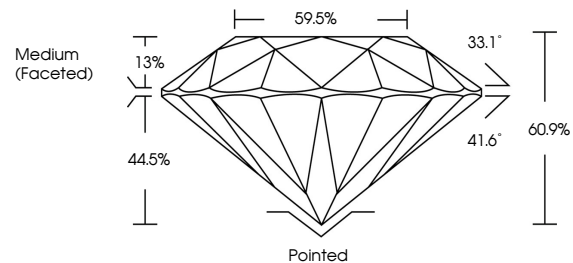
Carat Weight **1.73 CARAT**
 Color Grade **G**
 Clarity Grade **VS 2**
 Cut Grade **EXCELLENT**

ADDITIONAL GRADING INFORMATION

Polish **EXCELLENT**
 Symmetry **EXCELLENT**
 Fluorescence **NONE**
 Inscription(s) **LG572332568**

Comments: This Laboratory Grown Diamond was created by Chemical Vapor Deposition (CVD) growth process and may include post-growth treatment. Type IIa

PROPORTIONS



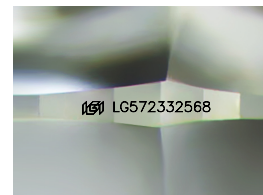
GRADING SCALES

CLARITY

IF	VVS ¹⁻²	VS ¹⁻²	SI ¹⁻²	I ¹⁻³
Internally Flawless	Very Very Slightly Included	Very Slightly Included	Slightly Included	Included

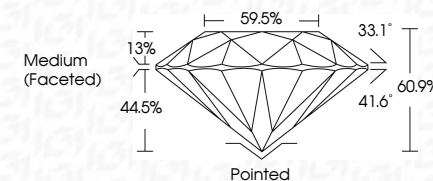
COLOR

D	E	F	G	H	I	J	Faint	Very Light	Light
---	---	---	---	---	---	---	-------	------------	-------



Sample Image Used

March 28, 2023
 IGI Report Number **LG572332568**
 Description **LABORATORY GROWN
DIAMOND**
 Shape and Cutting Style **ROUND BRILLIANT**
 Measurements **7.72 - 7.78 X 4.72 MM**
GRADING RESULTS
 Carat Weight **1.73 CARAT**
 Color Grade **G**
 Clarity Grade **VS 2**
 Cut Grade **EXCELLENT**



ADDITIONAL GRADING INFORMATION

Polish **EXCELLENT**
 Symmetry **EXCELLENT**
 Fluorescence **NONE**
 Inscription(s) **LG572332568**
 Comments: This Laboratory Grown Diamond was created by Chemical Vapor Deposition (CVD) growth process and may include post-growth treatment. Type IIa



IGI

March 28, 2023
 IGI Report No LG572332568
ROUND BRILLIANT
 7.72 - 7.78 X 4.72 MM
 Carat Weight **1.73 CARAT**
 Color Grade **G**
 Clarity Grade **VS 2**
 Cut Grade **EXCELLENT**
 Depth **60.9%**
 Table **13%**
 Girdle **44.5%**
 Pavilion Angle **41.6°**
 Crown Angle **33.1°**
 Culet **Pointed**
 Polish **EXCELLENT**
 Symmetry **EXCELLENT**
 Fluorescence **NONE**
 Inscription(s) **LG572332568**
 Comments: This Laboratory Grown Diamond was created by Chemical Vapor Deposition (CVD) growth process and may include post-growth treatment. Type IIa