



ELECTRONIC COPY

LABORATORY GROWN DIAMOND REPORT

June 27, 2023
 IGI Report Number **LG587329046**
 Description **LABORATORY GROWN
DIAMOND**
 Shape and Cutting Style **CUSHION BRILLIANT**
 Measurements **6.76 X 5.40 X 3.65 MM**
GRADING RESULTS
 Carat Weight **1.01 CARAT**
 Color Grade **D**
 Clarity Grade **VS 1**

ADDITIONAL GRADING INFORMATION

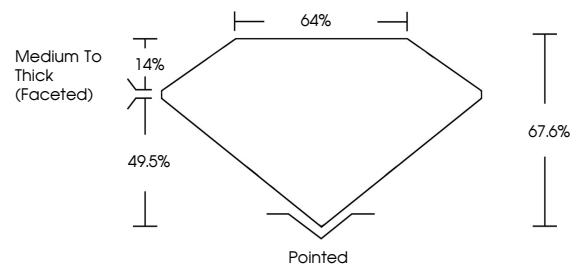
Polish **EXCELLENT**
 Symmetry **EXCELLENT**
 Fluorescence **NONE**
 Inscription(s) **IGI LG587329046**

Comments: As Grown - No indication of post-growth treatment.
 This Laboratory Grown Diamond was created by High Pressure High Temperature (HPHT) growth process.
 Type II

LABORATORY GROWN DIAMOND REPORT

LG587329046
 Report verification at igi.org

PROPORTIONS



**LABORATORY GROWN
DIAMOND REPORT**

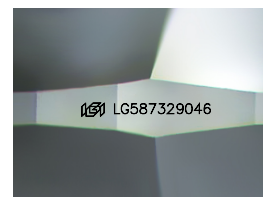
GRADING SCALES

CLARITY

IF	VVS ¹⁻²	VS ¹⁻²	SI ¹⁻²	I ¹⁻³
Internally Flawless	Very Very Slightly Included	Very Slightly Included	Slightly Included	Included

COLOR

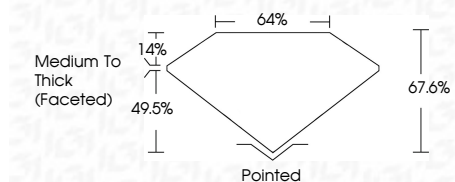
D	E	F	G	H	I	J	Faint	Very Light	Light
---	---	---	---	---	---	---	-------	------------	-------



Sample Image Used

LABORATORY GROWN DIAMOND REPORT

June 27, 2023
 IGI Report Number **LG587329046**
 Description **LABORATORY GROWN
DIAMOND**
 Shape and Cutting Style **CUSHION BRILLIANT**
 Measurements **6.76 X 5.40 X 3.65 MM**
GRADING RESULTS
 Carat Weight **1.01 CARAT**
 Color Grade **D**
 Clarity Grade **VS 1**



ADDITIONAL GRADING INFORMATION

Polish **EXCELLENT**
 Symmetry **EXCELLENT**
 Fluorescence **NONE**
 Inscription(s) **IGI LG587329046**
 Comments: As Grown - No indication of post-growth treatment.
 This Laboratory Grown Diamond was created by High Pressure High Temperature (HPHT) growth process.
 Type II



June 27, 2023
 IGI Report No **LG587329046**
CUSHION BRILLIANT
 Carat Weight **1.01 CARAT**
 Color Grade **D**
 Clarity Grade **VS 1**
 Table **67.6%**
 Girdle **49.5%**
 Depth **Medium To Thick (Faceted)**
 Culet **Pointed**
 Polish **EXCELLENT**
 Symmetry **EXCELLENT**
 Fluorescence **NONE**
 Inscription(s) **IGI LG587329046**

Comments: As Grown - No indication of post-growth treatment.
 This Laboratory Grown Diamond was created by High Pressure High Temperature (HPHT) growth process.
 Type II

