



ELECTRONIC COPY

LG587329053

Report verification at igi.org

LABORATORY GROWN DIAMOND REPORT

June 27, 2023
IGI Report Number **LG587329053**

Description **LABORATORY GROWN
DIAMOND**

Shape and Cutting Style **CUSHION BRILLIANT**

Measurements **6.68 X 5.51 X 3.76 MM**

GRADING RESULTS

Carat Weight **1.04 CARAT**

Color Grade **D**

Clarity Grade **VS 1**

ADDITIONAL GRADING INFORMATION

Polish **EXCELLENT**

Symmetry **EXCELLENT**

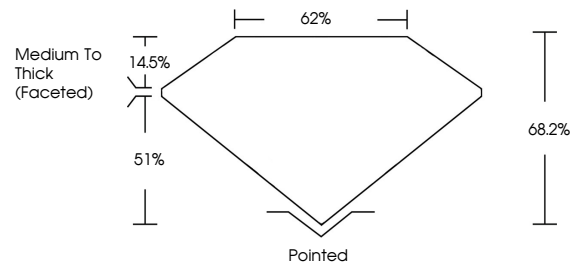
Fluorescence **NONE**

Inscription(s) **IGI LG587329053**

Comments: As Grown - No indication of post-growth treatment.

This Laboratory Grown Diamond was created by High Pressure High Temperature (HPHT) growth process. Type II

PROPORTIONS



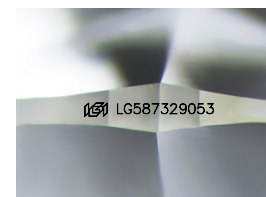
GRADING SCALES

CLARITY

IF	VVS ¹⁻²	VS ¹⁻²	SI ¹⁻²	I ¹⁻³
Internally Flawless	Very Very Slightly Included	Very Slightly Included	Slightly Included	Included

COLOR

D	E	F	G	H	I	J	Faint	Very Light	Light
---	---	---	---	---	---	---	-------	------------	-------



Sample Image Used

June 27, 2023
IGI Report Number **LG587329053**

Description **LABORATORY GROWN
DIAMOND**

Shape and Cutting Style **CUSHION BRILLIANT**

Measurements **6.68 X 5.51 X 3.76 MM**

GRADING RESULTS

Carat Weight **1.04 CARAT**

Color Grade **D**

Clarity Grade **VS 1**

ADDITIONAL GRADING INFORMATION

Polish **EXCELLENT**

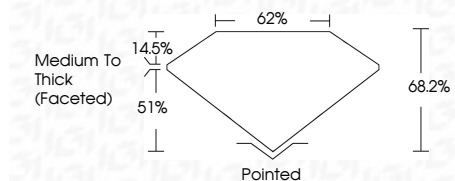
Symmetry **EXCELLENT**

Fluorescence **NONE**

Inscription(s) **IGI LG587329053**

Comments: As Grown - No indication of post-growth treatment.

This Laboratory Grown Diamond was created by High Pressure High Temperature (HPHT) growth process. Type II



IGI

June 27, 2023	IGI Report No LG587329053	1.04 CARAT	D
CUSHION BRILLIANT	6.68 X 5.51 X 3.76 MM	VS 1	68.2%
Carat Weight	Color Grade	Depth	62%
Clarity Grade	Table	Girdle	Medium To Thick (Faceted)
Polish	Symmetry	Fluorescence	Pointed
EXCELLENT	EXCELLENT	NONE	EXCELLENT
None	None	None	None
Inscription(s)	IGI LG587329053		

Comments: As Grown - No indication of post-growth treatment. This Laboratory Grown Diamond was created by High Pressure High Temperature (HPHT) growth process. Type II