



**ELECTRONIC COPY**

**LABORATORY GROWN DIAMOND REPORT**

June 30, 2023  
 IGI Report Number **LG588336389**  
 Description **LABORATORY GROWN  
DIAMOND**  
 Shape and Cutting Style **CUT CORNERED RECTANGULAR  
MODIFIED BRILLIANT**  
 Measurements **14.05 X 10.83 X 7.12 MM**

**GRADING RESULTS**

Carat Weight **9.35 CARATS**  
 Color Grade **G**  
 Clarity Grade **VVS 2**

**ADDITIONAL GRADING INFORMATION**

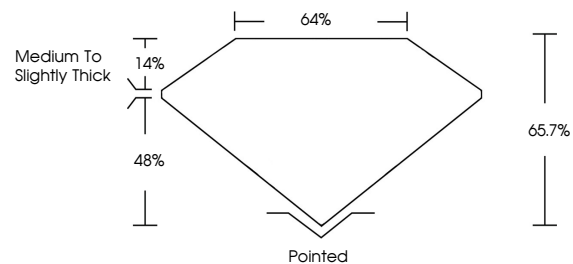
Polish **EXCELLENT**  
 Symmetry **EXCELLENT**  
 Fluorescence **NONE**  
 Inscription(s) **IGI LG588336389**

Comments: This Laboratory Grown Diamond was created by Chemical Vapor Deposition (CVD) growth process and may include post-growth treatment. Type IIa

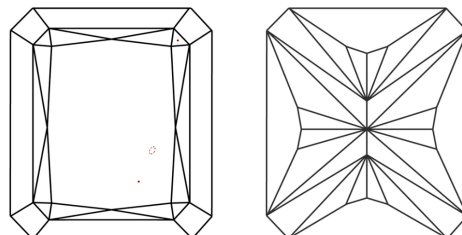
**LABORATORY GROWN DIAMOND REPORT**

**LG588336389**  
 Report verification at [igi.org](http://igi.org)

**PROPORTIONS**



**CLARITY CHARACTERISTICS**



**KEY TO SYMBOLS**

Red symbols indicate internal characteristics.  
 Green symbols indicate external characteristics.

**LABORATORY GROWN  
DIAMOND REPORT**

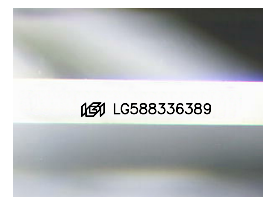
**GRADING SCALES**

**CLARITY**

IF	VVS <sup>1-2</sup>	VS <sup>1-2</sup>	SI <sup>1-2</sup>	I <sup>1-3</sup>
Internally Flawless	Very Very Slightly Included	Very Slightly Included	Slightly Included	Included

**COLOR**

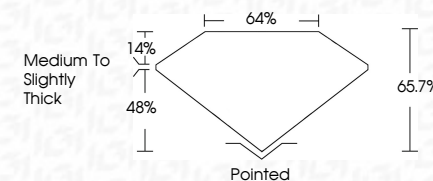
D	E	F	G	H	I	J	Faint	Very Light	Light
---	---	---	---	---	---	---	-------	------------	-------



Sample Image Used

**LABORATORY GROWN DIAMOND REPORT**

June 30, 2023  
 IGI Report Number **LG588336389**  
 Description **LABORATORY GROWN  
DIAMOND**  
 Shape and Cutting Style **CUT CORNERED  
RECTANGULAR MODIFIED  
BRILLIANT**  
 Measurements **14.05 X 10.83 X 7.12 MM**  
**GRADING RESULTS**  
 Carat Weight **9.35 CARATS**  
 Color Grade **G**  
 Clarity Grade **VVS 2**



**ADDITIONAL GRADING INFORMATION**

Polish **EXCELLENT**  
 Symmetry **EXCELLENT**  
 Fluorescence **NONE**  
 Inscription(s) **IGI LG588336389**  
 Comments: This Laboratory Grown Diamond was created by Chemical Vapor Deposition (CVD) growth process and may include post-growth treatment. Type IIa



June 30, 2023  
 IGI Report No **LG588336389**  
**CUT CORNERED RECT. MODIFIED BRILLIANT**  
**14.05 X 10.83 X 7.12 MM**  
 Carat Weight **9.35 CARATS**  
 Color Grade **G**  
 Clarity Grade **VVS 2**  
 Depth **65.7%**  
 Table **64%**  
 Girdle **Medium to Slightly Thick**  
 Culet **Pointed**  
 Polish **EXCELLENT**  
 Symmetry **EXCELLENT**  
 Fluorescence **NONE**  
 Inscription(s) **IGI LG588336389**

Comments: This Laboratory Grown Diamond was created by Chemical Vapor Deposition (CVD) growth process and may include post-growth treatment. Type IIa