



**ELECTRONIC COPY**

**LABORATORY GROWN DIAMOND REPORT**

LG589300610

Report verification at igi.org

**LABORATORY GROWN  
DIAMOND REPORT**

**LABORATORY GROWN DIAMOND REPORT**

**LABORATORY GROWN DIAMOND REPORT**

July 8, 2023  
 IGI Report Number **LG589300610**  
 Description **LABORATORY GROWN  
DIAMOND**  
 Shape and Cutting Style **SQUARE EMERALD CUT**  
 Measurements **7.66 X 7.66 X 4.87 MM**

**GRADING RESULTS**

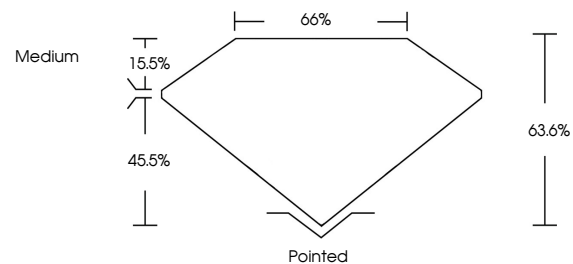
Carat Weight **2.64 CARATS**  
 Color Grade **G**  
 Clarity Grade **SI 1**

**ADDITIONAL GRADING INFORMATION**

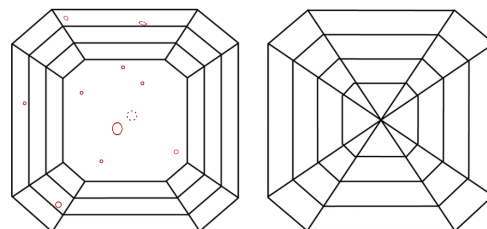
Polish **EXCELLENT**  
 Symmetry **EXCELLENT**  
 Fluorescence **NONE**  
 Inscription(s) **IGI LG589300610**

Comments: This Laboratory Grown Diamond was created by Chemical Vapor Deposition (CVD) growth process and may include post-growth treatment. Type IIa

**PROPORTIONS**



**CLARITY CHARACTERISTICS**



**KEY TO SYMBOLS**

Red symbols indicate internal characteristics.  
 Green symbols indicate external characteristics.

**GRADING SCALES**

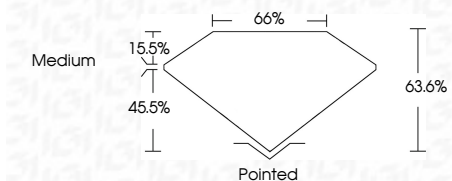
**CLARITY**

IF	VVS <sup>1-2</sup>	VS <sup>1-2</sup>	SI <sup>1-2</sup>	I <sup>1-3</sup>
Internally Flawless	Very Very Slightly Included	Very Slightly Included	Slightly Included	Included

**COLOR**

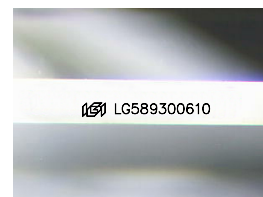
D	E	F	G	H	I	J	Faint	Very Light	Light
---	---	---	---	---	---	---	-------	------------	-------

July 8, 2023  
 IGI Report Number **LG589300610**  
 Description **LABORATORY GROWN  
DIAMOND**  
 Shape and Cutting Style **SQUARE EMERALD CUT**  
 Measurements **7.66 X 7.66 X 4.87 MM**  
**GRADING RESULTS**  
 Carat Weight **2.64 CARATS**  
 Color Grade **G**  
 Clarity Grade **SI 1**



**ADDITIONAL GRADING INFORMATION**

Polish **EXCELLENT**  
 Symmetry **EXCELLENT**  
 Fluorescence **NONE**  
 Inscription(s) **IGI LG589300610**  
 Comments: This Laboratory Grown Diamond was created by Chemical Vapor Deposition (CVD) growth process and may include post-growth treatment. Type IIa



Sample Image Used



**IGI**

July 8, 2023  
 IGI Report No LG589300610  
**SQUARE EMERALD CUT**  
 7.66 X 7.66 X 4.87 MM  
 Carat Weight **2.64 CARATS**  
 Color Grade **G**  
 Clarity Grade **SI 1**  
 Depth **63.6%**  
 Table **66%**  
 Girdle **Medium**  
 Culet **Pointed**  
 Polish **EXCELLENT**  
 Symmetry **EXCELLENT**  
 Fluorescence **NONE**  
 Inscription(s) **IGI LG589300610**

Comments: This Laboratory Grown Diamond was created by Chemical Vapor Deposition (CVD) growth process and may include post-growth treatment. Type IIa