



ELECTRONIC COPY

LABORATORY GROWN DIAMOND REPORT

July 21, 2023	
IGI Report Number	LG591304821
Description	LABORATORY GROWN DIAMOND
Shape and Cutting Style	ROUND BRILLIANT
Measurements	6.74 - 6.76 X 4.12 MM

GRADING RESULTS

Carat Weight	1.15 CARAT
Color Grade	G
Clarity Grade	VS 1
Cut Grade	IDEAL

ADDITIONAL GRADING INFORMATION

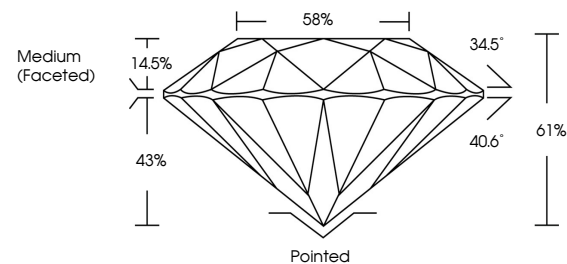
Polish	EXCELLENT
Symmetry	EXCELLENT
Fluorescence	NONE
Inscription(s)	 LG591304821

Comments: This Laboratory Grown Diamond was created by Chemical Vapor Deposition (CVD) growth process and may include post-growth treatment. Type IIa

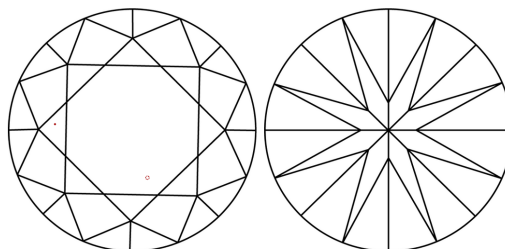
LABORATORY GROWN DIAMOND REPORT

LG591304821
Report verification at igi.org

PROPORTIONS



CLARITY CHARACTERISTICS



KEY TO SYMBOLS

Red symbols indicate internal characteristics.
Green symbols indicate external characteristics.

LABORATORY GROWN
DIAMOND REPORT

GRADING SCALES

CLARITY

IF	VVS ¹⁻²	VS ¹⁻²	SI ¹⁻²	I ¹⁻³
Internally Flawless	Very Very Slightly Included	Very Slightly Included	Slightly Included	Included

COLOR

D E F G H I J Faint Very Light Light



Sample Image Used

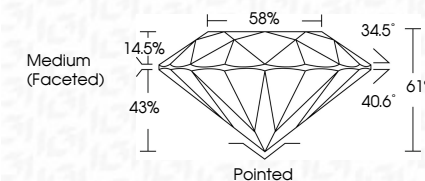


© IGI 2020, International Gemological Institute

FD - 10 20



July 21, 2023	
IGI Report Number	LG591304821
Description	LABORATORY GROWN DIAMOND
Shape and Cutting Style	ROUND BRILLIANT
Measurements	6.74 - 6.76 X 4.12 MM
GRADING RESULTS	
Carat Weight	1.15 CARAT
Color Grade	G
Clarity Grade	VS 1
Cut Grade	IDEAL



ADDITIONAL GRADING INFORMATION

Polish	EXCELLENT
Symmetry	EXCELLENT
Fluorescence	NONE
Inscription(s)	LG591304821 LG591304821
<p>Comments: This Laboratory Grown Diamond was created by Chemical Vapor Deposition (CVD) growth process and may include post-growth treatment.</p> <p>Type IIa</p>	

July 21, 2023	Report No. LG591304621	Carat Weight	1.16 CARAT
ROUND BRILLIANT		Color Grade	G
		Clarity Grade	VS 1
		Cut Grade	IDEAL
		Depth	61%
		Table	55%
		Grain	Medium (Faceted)
		Clue	Pointed
		Polish	EXCELLENT
		Symmetry	EXCELLENT
		Fluorescence	NONE
		Inscriptions(s)	659 LG591304621
<p>Comments: This Laboratory Grown Diamond was created by Chemical Vapor Deposition and may include post-growth treatment. Yes/No</p>			