



ELECTRONIC COPY

LABORATORY GROWN DIAMOND REPORT

July 15, 2023	
IGI Report Number	LG591330964
Description	LABORATORY GROWN DIAMOND
Shape and Cutting Style	ROUND BRILLIANT
Measurements	6.75 - 6.81 X 4.16 MM

GRADING RESULTS

Carat Weight	1.17 CARAT
Color Grade	H
Clarity Grade	VVS 2
Cut Grade	IDEAL

ADDITIONAL GRADING INFORMATION

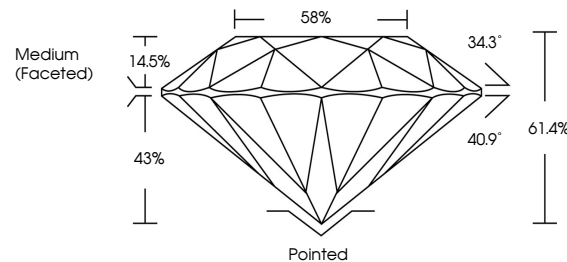
Polish	EXCELLENT
Symmetry	EXCELLENT
Fluorescence	NONE
Inscription(s)	15 LG591330964

Comments: This Laboratory Grown Diamond was created by Chemical Vapor Deposition (CVD) growth process and may include post-growth treatment.
Type IIa

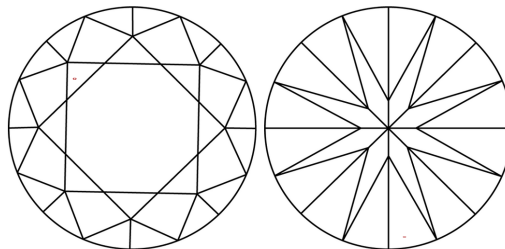
LABORATORY GROWN DIAMOND REPORT

LG591330964
Report verification at igi.org

PROPORTIONS



CLARITY CHARACTERISTICS



KEY TO SYMBOLS

Red symbols indicate internal characteristics.
Green symbols indicate external characteristics.

LABORATORY GROWN
DIAMOND REPORT

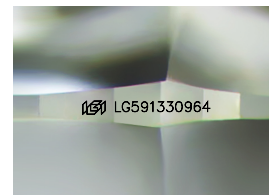
GRADING SCALES

CLARITY

IF	VVS ¹⁻²	VS ¹⁻²	SI ¹⁻²	I ¹⁻³
Internally Flawless	Very Very Slightly Included	Very Slightly Included	Slightly Included	Included

COLOR

D E F G H I J Faint Very Light Light



Sample Image Used



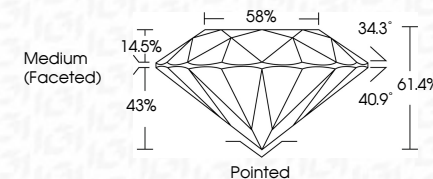
© IGI 2020, International Gemological Institute

FD - 10 20

LABORATORY GROWN DIAMOND REPORT

July 15, 2023	
IGI Report Number	LG591330964
Description	LABORATORY GROWN DIAMOND
Shape and Cutting Style	ROUND BRILLIANT
Measurements	6.75 - 6.81 X 4.16 MM

Carat Weight	1.17 CARAT
Color Grade	H
Clarity Grade	VVS 2
Cut Grade	IDEAL



ADDITIONAL GRADING INFORMATION

Polish	EXCELLENT
Symmetry	EXCELLENT
Fluorescence	NONE
Inscription(s)	 LG591330964

Comments: This Laboratory Grown Diamond was created by Chemical Vapor Deposition (CVD) growth process and may include post-growth treatment.
Type IIa



July 15, 2023	GI Report No. G591 133094
ROUND BRILLIANT	
7.75 - 4.81 X 4.16 MM	1.17 CARAT
Color Weight	H 2
Color Grade	VW6 2
Clarity Grade	IDEAL
Cut Grade	61.4%
Depth	58%
Table	Medium (Faceted)
Girdle	
Quiet	Parted
Polish	EXCELLENT
Symmetry	EXCELLENT
Fluorescence	NONE
Inscription(s)	69 LG591 133094
Comments:	
<p>Created by Crown Diamond Inc. Graded by Crown Diamond using the GIA® grading system. GIA® (GVD) growth process and may include post-growth treatment. Type IIA</p>	

www.igi.org