



**ELECTRONIC COPY**

## LABORATORY GROWN DIAMOND REPORT

July 14, 2023	
IGI Report Number	LG591330982
Description	LABORATORY GROWN DIAMOND
Shape and Cutting Style	ROUND BRILLIANT
Measurements	6.77 - 6.82 X 4.19 MM

## GRADING RESULTS

Carat Weight	1.19 CARAT
Color Grade	F
Clarity Grade	VS 2
Cut Grade	IDEAL

### ADDITIONAL GRADING INFORMATION

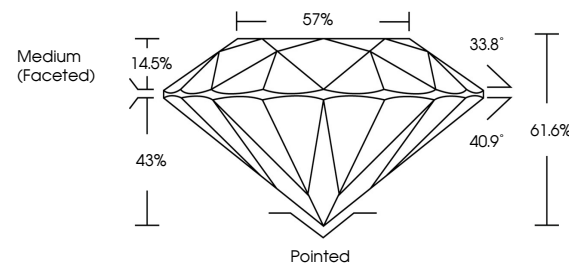
Polish	EXCELLENT
Symmetry	EXCELLENT
Fluorescence	NONE
Inscription(s)	 LG591330982

Comments: This Laboratory Grown Diamond was created by Chemical Vapor Deposition (CVD) growth process and may include post-growth treatment.  
Type IIa

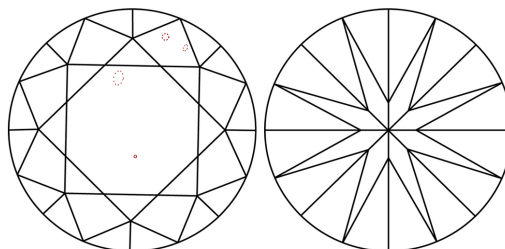
## LABORATORY GROWN DIAMOND REPORT

LG591330982  
Report verification at [lgi.org](https://lgi.org)

## PROPORTIONS



## CLARITY CHARACTERISTICS



### KEY TO SYMBOLS

Red symbols indicate internal characteristics.  
Green symbols indicate external characteristics.

LABORATORY GROWN  
DIAMOND REPORT

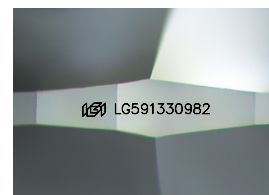
## GRADING SCALES

## CLARITY

IF	VVS <sup>1-2</sup>	VS <sup>1-2</sup>	SI <sup>1-2</sup>	I <sup>1-3</sup>
Internally Flawless	Very Very Slightly Included	Very Slightly Included	Slightly Included	Included

**COLOR**

D E F G H I J Faint Very Light Light



Sample Image Used



© IGI 2020, International Gemological Institute

FD - 10 20

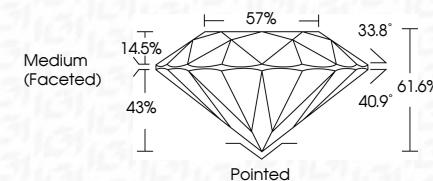
**www.igi.org**

## LABORATORY GROWN DIAMOND REPORT

July 14, 2023	
IGI Report Number	LG591330982
Description	LABORATORY GROWN DIAMOND
Shape and Cutting Style	ROUND BRILLIANT
Measurements	6.77 - 6.82 X 4.19 MM

## GRADING RESULTS

Carat Weight	1.19 CARAT
Color Grade	F
Clarity Grade	VS 2
Cut Grade	IDEAL



### ADDITIONAL GRADING INFORMATION

Polish	EXCELLENT
Symmetry	EXCELLENT
Fluorescence	NONE
Inscription(s)	 LG591330982

Comments: This Laboratory Grown Diamond was created by Chemical Vapor Deposition (CVD) growth process and may include post-growth treatment.  
Type IIa



July 14, 2023	Report No. LG591330982	1.19 CARAT	VS 2	Pointed	Comments: This Heavy Crown Diamond was treated by Chemical Vapor Deposition (CVD) growth process and may include post-growth treatment.
ROUND BRILLIANT	Color Grade	1.19 CARAT	IDEAL	EXCELLENT	
4.77 - 4.82 X 4.19 MM	Clarity Grade	VS 2	61.6%	EXCELLENT	
	Depth	Medium (Fasces=0)	57%	NONE	
	Table			1691 LG591330982	
	Girdle				
	Culet				
	Polish				
	Symmetry				
	Fluorescence				
	Inscriptions(s)				
	Type I/IIa				