



**ELECTRONIC COPY**

## LABORATORY GROWN DIAMOND REPORT

August 9, 2023	
IGI Report Number	LG591351053
Description	LABORATORY GROWN DIAMOND
Shape and Cutting Style	SQUARE EMERALD CUT
Measurements	5.54 X 5.52 X 3.71 MM

## GRADING RESULTS

Carat Weight	1.02 CARAT
Color Grade	E
Clarity Grade	VVS 2

### ADDITIONAL GRADING INFORMATION

Polish	EXCELLENT
Symmetry	EXCELLENT
Fluorescence	NONE
Inscription(s)	 LG591351053

Comments: As Grown - No indication of post-growth treatment.

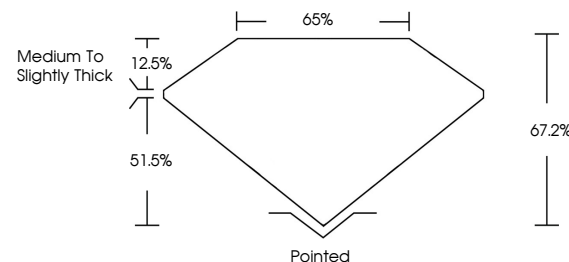
This Laboratory Grown Diamond was created by High Pressure High Temperature (HPHT) growth process.  
Type II

## LABORATORY GROWN DIAMOND REPORT

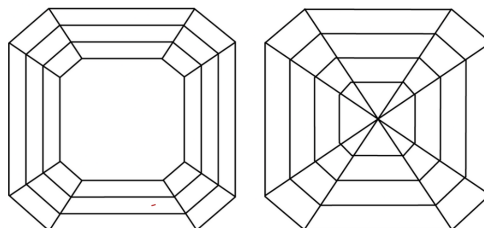
LG591351053

Report verification at [igi.org](http://igi.org)

## PROPORTIONS



## CLARITY CHARACTERISTICS



## KEY TO SYMBOLS

Red symbols indicate internal characteristics.  
Green symbols indicate external characteristics.

LABORATORY GROWN  
DIAMOND REPORT

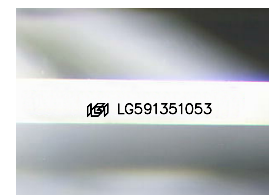
## GRADING SCALES

## CLARITY

IF	VVS <sup>1-2</sup>	VS <sup>1-2</sup>	SI <sup>1-2</sup>	I <sup>1-3</sup>
Internally Flawless	Very Very Slightly Included	Very Slightly Included	Slightly Included	Included

**COLOR**

D E F G H I J Faint Very Light Light



Sample Image Used



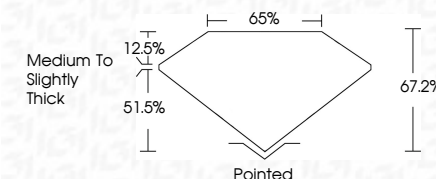
© IGI 2020, International Gemological Institute

FD - 10 20

**www.igi.org**

## LABORATORY GROWN DIAMOND REPORT

August 9, 2023	
IGI Report Number	LG591351053
Description	LABORATORY GROWN DIAMOND
Shape and Cutting Style	SQUARE EMERALD CUT
Measurements	5.54 X 5.52 X 3.71 MM
<b>GRADING RESULTS</b>	
Carat Weight	1.02 CARAT
Color Grade	E
Clarity Grade	VVS 2



### ADDITIONAL GRADING INFORMATION

Polish	EXCELLENT
Symmetry	EXCELLENT
Fluorescence	NONE
Inscription(s)	<del>151</del> LG591351053
Comments: As Grown - No indication of post-growth treatment.	
This Laboratory Grown Diamond was created by High Pressure High Temperature (HPHT) growth process.	
Type II	



	VLS 2	E	1.02 CARAT
August 9, 2023	VLS 2		
GJ Report No LG67183	61.2%		
SQUARE EMERALD CUT	65%		
	Medium To Slightly Thick		
	Painted		
	EXCELLENT		
	EXCELLENT		NONE
	(#) LS671831053		

Comments:

- No indication of post-growth treatment.
- The Laboratory Grown Diamond was created by High Pressure High temperature (dHHT) growth process.
- Type II