



ELECTRONIC COPY

LABORATORY GROWN DIAMOND REPORT

July 27, 2023	
IGI Report Number	LG592339222
Description	LABORATORY GROWN DIAMOND
Shape and Cutting Style	ROUND BRILLIANT
Measurements	6.59 - 6.65 X 4.04 MM

GRADING RESULTS

Carat Weight	1.08 CARAT
Color Grade	E
Clarity Grade	VS 1
Cut Grade	IDEAL

ADDITIONAL GRADING INFORMATION

Polish	EXCELLENT
Symmetry	EXCELLENT
Fluorescence	NONE
Inscription(s)	 LG592339222

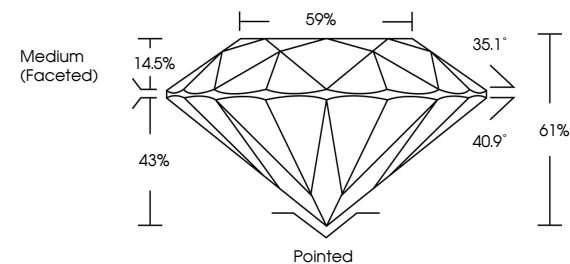
Comments: This Laboratory Grown Diamond was created by Chemical Vapor Deposition (CVD) growth process and may include post-growth treatment.
Type IIa

LABORATORY GROWN DIAMOND REPORT

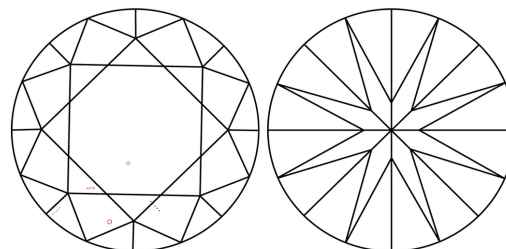
LG592339222

Report verification at igi.org

PROPORTIONS



CLARITY CHARACTERISTICS



KEY TO SYMBOLS

Red symbols indicate internal characteristics.
Green symbols indicate external characteristics.

LABORATORY GROWN
DIAMOND REPORT

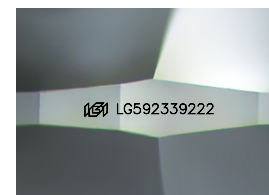
GRADING SCALES

CLARITY

IF	VVS ¹⁻²	VS ¹⁻²	SI ¹⁻²	I ¹⁻³
Internally Flawless	Very Very Slightly Included	Very Slightly Included	Slightly Included	Included

COLOR

D E F G H I J Faint Very Light Light



Sample Image Used



© IGI 2020, International Gemological Institute

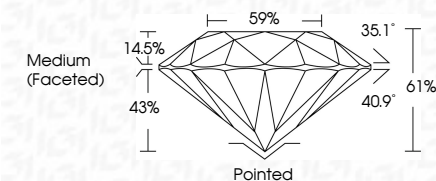
FD - 10 20

www.igi.org

LABORATORY GROWN DIAMOND REPORT

July 27, 2023	
IGI Report Number	LG592339222
Description	LABORATORY GROWN DIAMOND
Shape and Cutting Style	ROUND BRILLIANT
Measurements	6.59 - 6.65 X 4.04 MM

GRADING RESULTS	
Carat Weight	1.08 CARAT
Color Grade	E
Clarity Grade	VS 1
Cut Grade	IDEAL



ADDITIONAL GRADING INFORMATION

Polish	EXCELLENT
Symmetry	EXCELLENT
Fluorescence	NONE
Inscription(s)	(15) LG592339222

Comments: This Laboratory Grown Diamond was created by Chemical Vapor Deposition (CVD) growth process and may include post-growth treatment.
Type IIa



July 27, 2023	GL Report Num LG59239222	1.08 CARAT
ESSENTIAL	ROUND BRILLIANT	VSI
59- 59- 6.65 X 6.04 MM		IDEAL
	Carat Weight	61%
	Color Grade	59%
	Clarity Grade	Medium (Faceted)
	Cut Grade	Polished
	Depth	EXCELLENT
	Table	EXCELLENT
	Girdle	NONE
	Culet	(#) LG59239222
	Polish	
	Symmetry	
	Fluorescence	
	Inscriptions(s)	
Comments: This is a Crown Diamond was created by Chemical Vapor Deposition (CVD) growth process and may include post-growth treatment.		
Type IIG		