



**ELECTRONIC COPY**

LG598348872

Report verification at [igi.org](http://igi.org)

**LABORATORY GROWN DIAMOND REPORT**

September 15, 2023  
IGI Report Number **LG598348872**

Description **LABORATORY GROWN  
DIAMOND**

Shape and Cutting Style **OVAL BRILLIANT**

Measurements **8.48 X 6.10 X 3.83 MM**

**GRADING RESULTS**

Carat Weight **1.22 CARAT**

Color Grade **E**

Clarity Grade **VS 1**

**ADDITIONAL GRADING INFORMATION**

Polish **EXCELLENT**

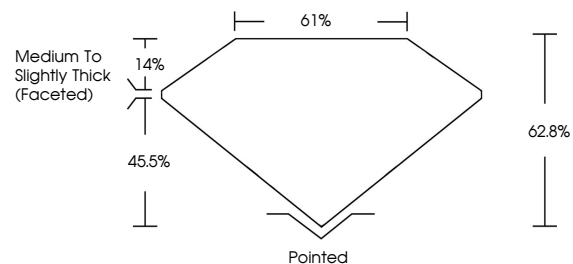
Symmetry **EXCELLENT**

Fluorescence **NONE**

Inscription(s) **IGI LG598348872**

Comments: This Laboratory Grown Diamond was created by Chemical Vapor Deposition (CVD) growth process and may include post-growth treatment. Type IIa

**PROPORTIONS**



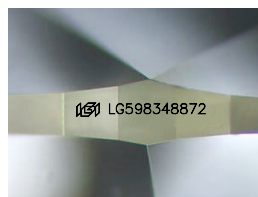
**GRADING SCALES**

**CLARITY**

IF	VVS <sup>1-2</sup>	VS <sup>1-2</sup>	SI <sup>1-2</sup>	I <sup>1-3</sup>
Internally Flawless	Very Very Slightly Included	Very Slightly Included	Slightly Included	Included

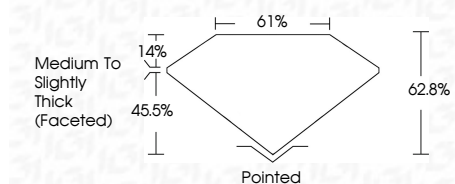
**COLOR**

D	E	F	G	H	I	J	Faint	Very Light	Light
---	---	---	---	---	---	---	-------	------------	-------



Sample Image Used

September 15, 2023  
IGI Report Number **LG598348872**  
Description **LABORATORY GROWN  
DIAMOND**  
Shape and Cutting Style **OVAL BRILLIANT**  
Measurements **8.48 X 6.10 X 3.83 MM**  
**GRADING RESULTS**  
Carat Weight **1.22 CARAT**  
Color Grade **E**  
Clarity Grade **VS 1**



**ADDITIONAL GRADING INFORMATION**

Polish **EXCELLENT**

Symmetry **EXCELLENT**

Fluorescence **NONE**

Inscription(s) **IGI LG598348872**

Comments: This Laboratory Grown Diamond was created by Chemical Vapor Deposition (CVD) growth process and may include post-growth treatment. Type IIa



**IGI**

September 15, 2023  
IGI Report No LG598348872  
**OVAL BRILLIANT**  
8.48 X 6.10 X 3.83 MM  
Carat Weight **1.22 CARAT**  
Color Grade **E**  
Clarity Grade **VS 1**  
Depth **62.0%**  
Table **61%**  
Girdle **Medium to Slightly Thick (Faceted)**  
Culet **Pointed**  
Polish **EXCELLENT**  
Symmetry **EXCELLENT**  
Fluorescence **NONE**  
Inscription(s) **IGI LG598348872**  
Comments: This Laboratory Grown Diamond was created by Chemical Vapor Deposition (CVD) growth process and may include post-growth treatment. Type IIa