

**ELECTRONIC COPY**

## LABORATORY GROWN DIAMOND REPORT

October 3, 2023	
IGI Report Number	LG598394163
Description	LABORATORY GROWN DIAMOND
Shape and Cutting Style	PRINCESS CUT
Measurements	5.67 X 5.62 X 3.94 MM

## GRADING RESULTS

Carat Weight	1.12 CARAT
Color Grade	D
Clarity Grade	VS 1

### ADDITIONAL GRADING INFORMATION

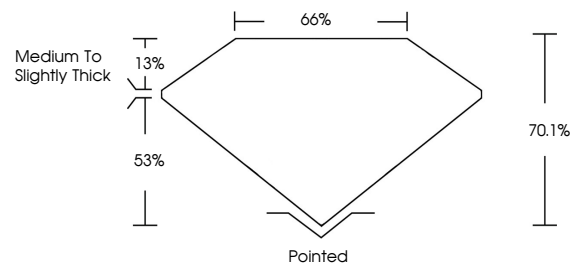
Polish	EXCELLENT
Symmetry	EXCELLENT
Fluorescence	NONE
Inscription(s)	 LG598394163

Comments: As Grown - No indication of post-growth treatment.  
This Laboratory Grown Diamond was created by High Pressure High Temperature (HPHT) growth process.  
Type II

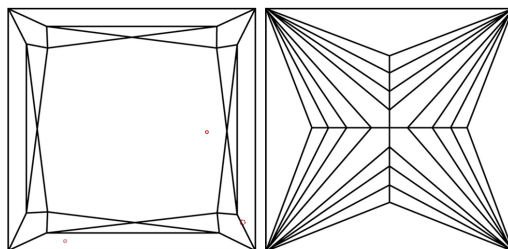
## LABORATORY GROWN DIAMOND REPORT

LG598394163  
Report verification at [igi.org](https://igi.org)

## PROPORTIONS



## CLARITY CHARACTERISTICS



## KEY TO SYMBOLS

Red symbols indicate internal characteristics.  
Green symbols indicate external characteristics.

LABORATORY GROWN  
DIAMOND REPORT

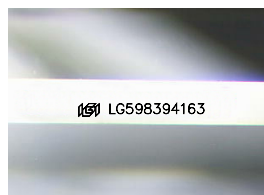
## GRADING SCALES

## CLARITY

IF	VVS <sup>1-2</sup>	VS <sup>1-2</sup>	SI <sup>1-2</sup>	I <sup>1-3</sup>
Internally Flawless	Very Very Slightly Included	Very Slightly Included	Slightly Included	Included

**COLOR**

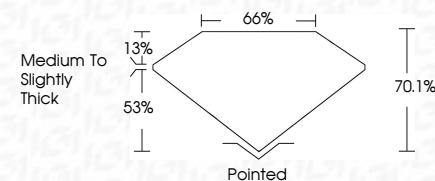
D E F G H I J Faint Very Light Light



Sample Image Used

## LABORATORY GROWN DIAMOND REPORT

October 3, 2023	
IGI Report Number	LG598394163
Description	LABORATORY GROWN DIAMOND
Shape and Cutting Style	PRINCESS CUT
Measurements	5.67 X 5.62 X 3.94 MM
<b>GRADING RESULTS</b>	
Carat Weight	1.12 CARAT
Color Grade	D
Clarity Grade	VS 1



### ADDITIONAL GRADING INFORMATION

Polish	EXCELLENT
Symmetry	EXCELLENT
Fluorescence	NONE
Inscription(s)	 LG598394163
Comments: As Grown - No indication of post-growth treatment.	
This Laboratory Grown Diamond was created by High Pressure High Temperature (HPHT) growth process.	
Type II	



IG



© IGI 2020, International Gemological Institute

FD - 10 20

October 3, 2023  
GI Report No LG598394163  
PRINCESS CLIT

1.12 CARAT	Color Weight	VS 1	Pointed
D	Color Grade	70.1%	EXCELLENT
	Clarity Grade	65%	EXCELLENT
	Depth		NONE
	Table		4mm GEMSTONE 1.63
	Girdle	Medium To Slightly Thick	
	Culet		
	Polish		
	Symmetry		
	Fluorescence		
	Measurements (mm)		

**Comments:**  
As Grown - No indication of post-growth treatment.