



ELECTRONIC COPY

LABORATORY GROWN DIAMOND REPORT

| | |
|-------------------------|-----------------------------|
| September 29, 2023 | |
| IGI Report Number | LG598394407 |
| Description | LABORATORY GROWN DIAMOND |
| Shape and Cutting Style | CUSHION MODIFIED BRILLIANT |
| Measurements | 7.64 X 6.22 X 4.24 MM |

GRADING RESULTS

| | |
|---------------|------------|
| Carat Weight | 1.53 CARAT |
| Color Grade | D |
| Clarity Grade | VVS 2 |

ADDITIONAL GRADING INFORMATION

| | |
|----------------|---|
| Polish | EXCELLENT |
| Symmetry | EXCELLENT |
| Fluorescence | NONE |
| Inscription(s) |  LG598394407 |

Comments: As Grown - No indication of post-growth treatment.

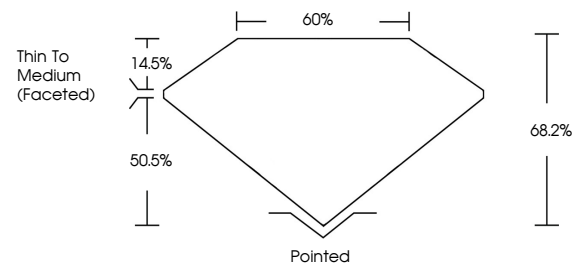
This Laboratory Grown Diamond was created by High Pressure High Temperature (HPHT) growth process.
Type II

LABORATORY GROWN DIAMOND REPORT

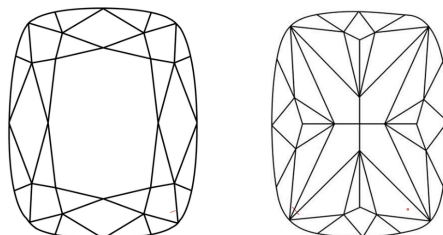
LG598394407

Report verification at igi.org

PROPORTIONS



CLARITY CHARACTERISTICS



KEY TO SYMBOLS

Red symbols indicate internal characteristics.
Green symbols indicate external characteristics.

LABORATORY GROWN
DIAMOND REPORT

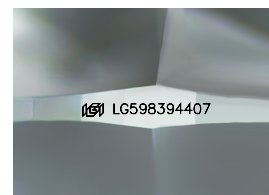
GRADING SCALES

CLARITY

| IF | VVS ¹⁻² | VS ¹⁻² | SI ¹⁻² | I ¹⁻³ |
|---------------------|-----------------------------|------------------------|-------------------|------------------|
| Internally Flawless | Very Very Slightly Included | Very Slightly Included | Slightly Included | Included |

COLOR

D E F G H I J Faint Very Light Light



Sample Image Used



© IGI 2020, International Gemological Institute

FD - 10 20

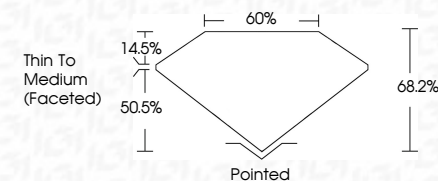
www.igi.org

LABORATORY GROWN DIAMOND REPORT

| | |
|-------------------------|-------------------------------|
| September 29, 2023 | |
| IGI Report Number | LG598394407 |
| Description | LABORATORY GROWN DIAMOND |
| Shape and Cutting Style | CUSHION MODIFIED BRILLIANT |
| Measurements | 7.64 X 6.22 X 4.24 MM |

GRADING RESULTS

| | |
|---------------|------------|
| Carat Weight | 1.53 CARAT |
| Color Grade | D |
| Clarity Grade | VVS 2 |



ADDITIONAL GRADING INFORMATION

| | |
|----------------|----------------|
| Polish | EXCELLENT |
| Symmetry | EXCELLENT |
| Fluorescence | NONE |
| Inscription(s) | 15 LG598394407 |

Comments: As Grown - No indication of post-growth treatment.

This Laboratory Grown Diamond was created by High Pressure High Temperature (HPHT) growth process.
Type II



September 29, 2023
 GI Report No LG598394407
 LUMINEX MODIFIED BRILLIANT

| | | | | | | | | | | |
|-----------------------|-------------|---------------|-------|-------|--------------------------|---------|-----------|-----------|--------------|-----------------|
| 1.53 CARAT | D | VS 2 | 68.2% | 60% | Thin To Medium (faceted) | Pointed | EXCELLENT | EXCELLENT | NONE | 4661 G598304477 |
| 7.64 X 6.22 X 4.24 MM | | | | | | | | | | |
| Carat Weight | Color Grade | Clarity Grade | Depth | Table | Girdle | Culet | Polish | Symmetry | Fluorescence | Comments |

Comments:
As Grown - No indication of post-growth treatment.
This Laboratory Grown Diamond was created by High Pressure High temperature (HPHT) growth process.