



**ELECTRONIC COPY**

## LABORATORY GROWN DIAMOND REPORT

|                         |                             |
|-------------------------|-----------------------------|
| September 20, 2023      |                             |
| IGI Report Number       | LG600327268                 |
| Description             | LABORATORY GROWN<br>DIAMOND |
| Shape and Cutting Style | ROUND BRILLIANT             |
| Measurements            | 6.86 - 6.90 X 4.08 MM       |

## GRADING RESULTS

|               |            |
|---------------|------------|
| Carat Weight  | 1.18 CARAT |
| Color Grade   | G          |
| Clarity Grade | VS 1       |
| Cut Grade     | EXCELLENT  |

### ADDITIONAL GRADING INFORMATION

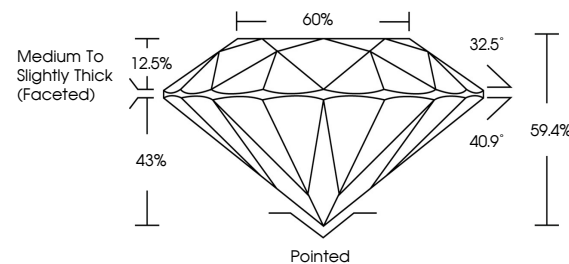
|                |   |
|----------------|---|
| Polish         | EXCELLENT   |
| Symmetry       | EXCELLENT   |
| Fluorescence   | NONE  |
| Inscription(s) |  LG600327268 |

Comments: This Laboratory Grown Diamond was created by Chemical Vapor Deposition (CVD) growth process and may include post-growth treatment.  
Type IIa

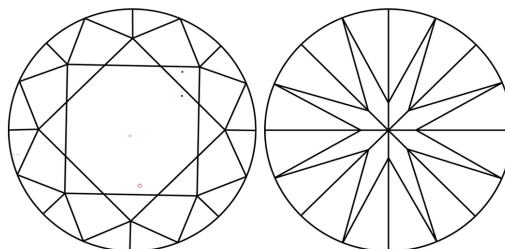
## LABORATORY GROWN DIAMOND REPORT

LG600327268  
Report verification at [igi.org](http://igi.org)

## PROPORTIONS



## CLARITY CHARACTERISTICS



## KEY TO SYMBOLS

Red symbols indicate internal characteristics.  
Green symbols indicate external characteristics.

LABORATORY GROWN  
DIAMOND REPORT

## GRADING SCALES

## CLARITY

| IF                  | VVS <sup>1-2</sup>          | VS <sup>1-2</sup>      | SI <sup>1-2</sup> | I <sup>1-3</sup> |
|---------------------|-----------------------------|------------------------|-------------------|------------------|
| Internally Flawless | Very Very Slightly Included | Very Slightly Included | Slightly Included | Included         |

**COLOR**

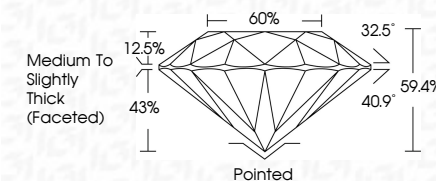
D E F G H I J Faint Very Light Light



Sample Image Used



|                         |                             |
|-------------------------|-----------------------------|
| September 20, 2023      |                             |
| IGI Report Number       | LG600327268                 |
| Description             | LABORATORY GROWN<br>DIAMOND |
| Shape and Cutting Style | ROUND BRILLIANT             |
| Measurements            | 6.86 - 6.90 X 4.08 MM       |
| <b>GRADING RESULTS</b>  |                             |
| Carat Weight            | 1.18 CARAT                  |
| Color Grade             | G                           |
| Clarity Grade           | VS 1                        |
| Cut Grade               | EXCELLENT                   |



### ADDITIONAL GRADING INFORMATION

|                |                  |
|----------------|------------------|
| Polish         | EXCELLENT        |
| Symmetry       | EXCELLENT        |
| Fluorescence   | NONE             |
| Inscription(s) | (15) LG600327268 |

Comments: This Laboratory Grown Diamond was created by Chemical Vapor Deposition (CVD) growth process and may include post-growth treatment.  
Type IIa



© IGI 2020, International Gemological Institute

FD - 10 20



THIS DOCUMENT WAS PRODUCED WITH THE FOLLOWING SECURITY MEASURES: SPECIAL DOCUMENT PAPER, INK SCREENS, WATERMARK, BACKGROUND DESIGNS, HOLOGRAM AND OTHER SECURITY FEATURES NOT LISTED AND DO EXCEED DOCUMENT SECURITY INDUSTRY GUIDELINES

**www.igi.org**

September 20, 2023  
IGI Report No LG600327268  
ROUND BRILLIANT

|               |                                      |
|---------------|--------------------------------------|
| Carat Weight  | 1.18 CARAT                           |
| Color Grade   | G                                    |
| Clarity Grade | VS 1                                 |
| Cut Grade     | EXCELLENT                            |
| Depth         | 69.4%                                |
| Table         | 60%                                  |
| Girdle        | Medium To Slightly Thick (Preferred) |
| Culet         | Pointed                              |
| Polish        | EXCELLENT                            |
| Symmetry      | EXCELLENT                            |
| Fluorescence  | NONE                                 |

**Comments:**  
This Laboratory Grown Diamond was created by Chemical Vapor Deposition (CVD) growth process and may include post-growth treatment.