



ELECTRONIC COPY

LG600331113

Report verification at igi.org

LABORATORY GROWN DIAMOND REPORT

September 23, 2023
 IGI Report Number **LG600331113**
 Description **LABORATORY GROWN
DIAMOND**
 Shape and Cutting Style **EMERALD CUT**
 Measurements **8.61 X 6.21 X 4.03 MM**

GRADING RESULTS

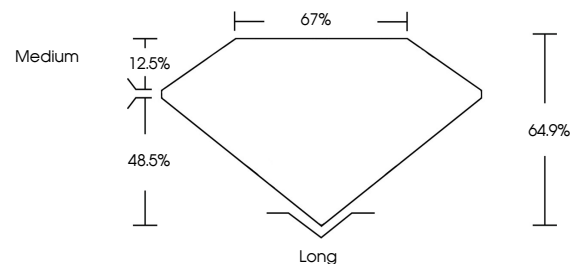
Carat Weight **2.19 CARATS**
 Color Grade **G**
 Clarity Grade **VS 2**

ADDITIONAL GRADING INFORMATION

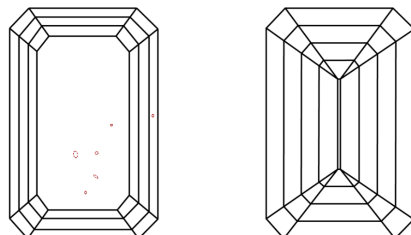
Polish **EXCELLENT**
 Symmetry **EXCELLENT**
 Fluorescence **NONE**
 Inscription(s) **IGI LG600331113**

Comments: This Laboratory Grown Diamond was created by Chemical Vapor Deposition (CVD) growth process and may include post-growth treatment. Type IIa

PROPORTIONS



CLARITY CHARACTERISTICS



KEY TO SYMBOLS

Red symbols indicate internal characteristics.
 Green symbols indicate external characteristics.

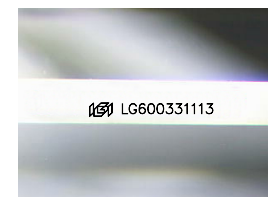
GRADING SCALES

CLARITY

IF	VVS ¹⁻²	VS ¹⁻²	SI ¹⁻²	I ¹⁻³
Internally Flawless	Very Very Slightly Included	Very Slightly Included	Slightly Included	Included

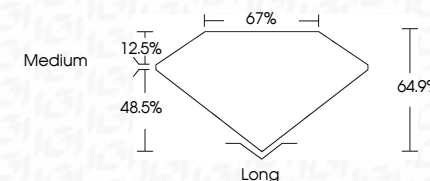
COLOR

D	E	F	G	H	I	J	Faint	Very Light	Light
---	---	---	---	---	---	---	-------	------------	-------



Sample Image Used

September 23, 2023
 IGI Report Number **LG600331113**
 Description **LABORATORY GROWN
DIAMOND**
 Shape and Cutting Style **EMERALD CUT**
 Measurements **8.61 X 6.21 X 4.03 MM**
GRADING RESULTS
 Carat Weight **2.19 CARATS**
 Color Grade **G**
 Clarity Grade **VS 2**



ADDITIONAL GRADING INFORMATION

Polish **EXCELLENT**
 Symmetry **EXCELLENT**
 Fluorescence **NONE**
 Inscription(s) **IGI LG600331113**

Comments: This Laboratory Grown Diamond was created by Chemical Vapor Deposition (CVD) growth process and may include post-growth treatment. Type IIa



IGI

September 23, 2023
 IGI Report No. LG600331113
EMERALD CUT
 8.61 X 6.21 X 4.03 MM
 Carat Weight **2.19 CARATS**
 Color Grade **G**
 Clarity Grade **VS 2**
 Depth **48.5%**
 Table **12.5%**
 Girdle **67%**
 Medium
 Long
 EXCELLENT
 EXCELLENT
 NONE
 IGI LG600331113

Comments: This Laboratory Grown Diamond was created by Chemical Vapor Deposition (CVD) growth process and may include post-growth treatment. Type IIa

