



ELECTRONIC COPY

LABORATORY GROWN DIAMOND REPORT

October 4, 2023	
IGI Report Number	LG601325981
Description	LABORATORY GROWN DIAMOND
Shape and Cutting Style	ROUND BRILLIANT
Measurements	6.68 - 6.73 X 3.98 MM
GRADING RESULTS	
Carat Weight	1.10 CARAT
Color Grade	F
Clarity Grade	VVS 2
Cut Grade	EXCELLENT

ADDITIONAL GRADING INFORMATION

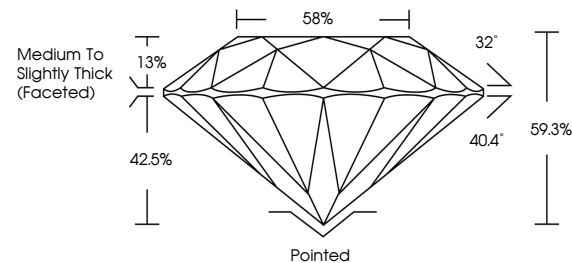
Polish	EXCELLENT
Symmetry	EXCELLENT
Fluorescence	NONE
Inscription(s)	 LG601325981

Comments: This Laboratory Grown Diamond was created by Chemical Vapor Deposition (CVD) growth process and may include post-growth treatment.
Type IIa

LABORATORY GROWN DIAMOND REPORT

LG601325981
Report verification at igi.org

PROPORTIONS



GRADING SCALES

CLARITY

IF	VVS ¹⁻²	VS ¹⁻²	SI ¹⁻²	I ¹⁻³
Internally Flawless	Very Very Slightly Included	Very Slightly Included	Slightly Included	Included

COLOR

D E F G H I J Faint Very Light Light



Sample Image Used



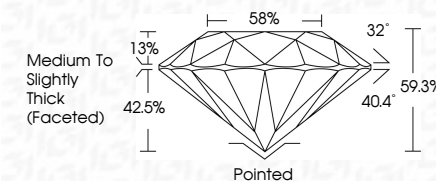
© IGI 2020, International Gemological Institute

FD - 10 20


www.igi.org

LABORATORY GROWN DIAMOND REPORT

October 4, 2023	
IGI Report Number	LG601325981
Description	LABORATORY GROWN DIAMOND
Shape and Cutting Style	ROUND BRILLIANT
Measurements	6.68 - 6.73 X 3.98 MM
GRADING RESULTS	
Carat Weight	1.10 CARAT
Color Grade	F
Clarity Grade	VVS 2
Cut Grade	EXCELLENT



ADDITIONAL GRADING INFORMATION

Polish	EXCELLENT
Symmetry	EXCELLENT
Fluorescence	NONE
Inscription(s)	 LG601325981
<p>Comments: This Laboratory Grown Diamond was created by Chemical Vapor Deposition (CVD) growth process and may include post-growth treatment.</p> <p>Type IIa</p>	



October 4, 2023
LGI Report No LG601325981

6.68 - 6.73 X 3.98 MM
ROUND BRILLIANT

5.68 - 6.73 X 3.98 MM
Carat Weight 1.10 CARAT

Color Grade F

Clarity Grade	WS 2
Very Good	
Good	
Fair	
Poor	
Very Poor	

Out Grade		EXCELLENT
Depth		EQ 90%

Dep III	69.3%
Table	58%

Girdle
Medium To Slightly
Thick (Faceted)

	Culet	Pointed
1		
2		
3		
4		
5		
6		
7		
8		
9		
10		
11		
12		
13		
14		
15		
16		
17		
18		
19		
20		
21		
22		
23		
24		
25		
26		
27		
28		
29		
30		
31		
32		
33		
34		
35		
36		
37		
38		
39		
40		
41		
42		
43		
44		
45		
46		
47		
48		
49		
50		
51		
52		
53		
54		
55		
56		
57		
58		
59		
60		
61		
62		
63		
64		
65		
66		
67		
68		
69		
70		
71		
72		
73		
74		
75		
76		
77		
78		
79		
80		
81		
82		
83		
84		
85		
86		
87		
88		
89		
90		
91		
92		
93		
94		
95		
96		
97		
98		
99		
100		

Polish

Fluorescence	EXCELLENT
Symmetry	NONE

Inscription(s)
151 LG601325981

Comments:
 Title Laboratory: Crayon Normand 1,000

This laboratory grown diamond was created by Chemical Vapor Deposition (CVD) growth process and may include

post-growth treatment.
Type IIa