



ELECTRONIC COPY

LG603335764

Report verification at igi.org

LABORATORY GROWN DIAMOND REPORT

October 11, 2023
IGI Report Number **LG603335764**

Description **LABORATORY GROWN
DIAMOND**
Shape and Cutting Style **ROUND BRILLIANT**
Measurements **11.63 - 11.66 X 7.02 MM**

GRADING RESULTS

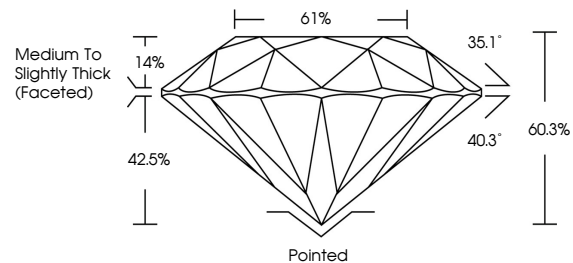
Carat Weight **6.00 CARATS**
Color Grade **G**
Clarity Grade **VS 2**
Cut Grade **EXCELLENT**

ADDITIONAL GRADING INFORMATION

Polish **EXCELLENT**
Symmetry **EXCELLENT**
Fluorescence **NONE**
Inscription(s) **LG603335764**

Comments: This Laboratory Grown Diamond was created by Chemical Vapor Deposition (CVD) growth process and may include post-growth treatment. Type IIa

PROPORTIONS



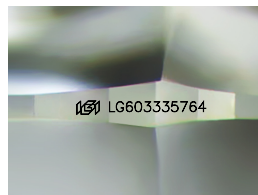
GRADING SCALES

CLARITY

IF	VVS ¹⁻²	VS ¹⁻²	SI ¹⁻²	I ¹⁻³
Internally Flawless	Very Very Slightly Included	Very Slightly Included	Slightly Included	Included

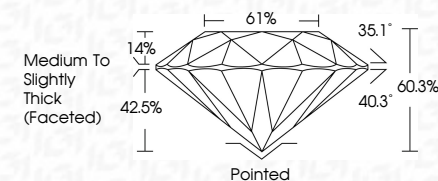
COLOR

D	E	F	G	H	I	J	Faint	Very Light	Light
---	---	---	---	---	---	---	-------	------------	-------



Sample Image Used

October 11, 2023
IGI Report Number **LG603335764**
Description **LABORATORY GROWN
DIAMOND**
Shape and Cutting Style **ROUND BRILLIANT**
Measurements **11.63 - 11.66 X 7.02 MM**
GRADING RESULTS
Carat Weight **6.00 CARATS**
Color Grade **G**
Clarity Grade **VS 2**
Cut Grade **EXCELLENT**



ADDITIONAL GRADING INFORMATION

Polish **EXCELLENT**
Symmetry **EXCELLENT**
Fluorescence **NONE**
Inscription(s) **LG603335764**
Comments: This Laboratory Grown Diamond was created by Chemical Vapor Deposition (CVD) growth process and may include post-growth treatment. Type IIa



IGI



October 11, 2023
IGI Report No LG603335764
ROUND BRILLIANT
11.63 - 11.66 X 7.02 MM
Carat Weight 6.00 CARATS
Color Grade G
Clarity Grade VS 2
Cut Grade EXCELLENT
Depth 60.3%
Table 61%
Girdle Medium To Slightly Thick (Faceted)
Culet Pointed
Polish EXCELLENT
Symmetry EXCELLENT
Fluorescence NONE
Inscriptions(s) IGI LG603335764
Comments: This Laboratory Grown Diamond was created by Chemical Vapor Deposition (CVD) growth process and may include post-growth treatment. Type IIa